

**FOR SALE**  
**VALUE ADD / MULTI-TENANT**  
**CAMDEN OFFICE/INDUSTRIAL PARK**

**730-750**  
**CAMDEN AVENUE**

**CAMPBELL, CA 95008**

**PC** INC **PRIME COMMERCIAL**  
INCORPORATED

 [www.primecommercialinc.com](http://www.primecommercialinc.com)

 OFFICE: (408) 879-4000

**DOUG FERRARI** Lic. 01032363  
[dferrari@primecommercialinc.com](mailto:dferrari@primecommercialinc.com)  
**(408) 879-4002** OFFICE

**DIXIE DIVINE** Lic. 00926251 & 01481181  
[ddivine@primecommercialinc.com](mailto:ddivine@primecommercialinc.com)  
**(408) 313-8900** CELL

# CONFIDENTIALITY & Disclaimer

Prime Commercial, Inc. has been retained on an exclusive right to sell basis to market 730-750 Camden Avenue, Campbell, CA 95008. The information herein distributed by Prime Commercial, Inc. is intended to be viewed only by the parties specifically targeted by Prime Commercial, Inc. The investment package should not be made available to any other parties unless first verified, in writing, by Prime Commercial, Inc. This Investment offering has been prepared to provide a summary, unverified information to prospective purchasers, and to establish only a preliminary level of interest in the subject property. The information contained herein is not a substitute for a thorough due diligence investigation. Prime Commercial, Inc. has not made any investigation, and makes no warranty or representation, with respect to the income or expenses for the subject property, the future projected financial improvements, the presence or absence of contaminating substances, PCB's or asbestos, the compliance with State and Federal regulations, the physical condition of the improvements thereon, or the financial condition or business prospects of any tenant, or any tenant's plans or intentions to continue its occupancy of the subject property. The information contained in this investment offering has been obtained from sources Prime Commercial, Inc., deems reliable; however, Prime Commercial, Inc. has not verified and will not verify any of the information contained herein, nor has Prime Commercial, Inc. conducted any investigation regarding these matters and makes no warranty or representation whatsoever regarding the accuracy or completeness of the information provided. All potential buyers must take the appropriate measures to verify all of the information set forth herein.


The Seller expressly reserves the right, at its sole discretion, to withdraw the Property from the market. Seller and Prime Commercial, Inc. reserves the right, expressed or implied, to reject any offer to purchase the property and to terminate discussions with any person or entity reviewing this offering memorandum until and unless the seller executes and delivers a signed purchase agreement with terms acceptable to the Seller.

**DOUG FERRARI** Lic. 01032363  
dferrari@primecommercialinc.com  
(408) 879-4002 OFFICE

**DIXIE DIVINE** Lic. 00926251 & 01481181  
ddivine@primecommercialinc.com  
(408) 313-8900 CELL



 [www.primecommercialinc.com](http://www.primecommercialinc.com)

 OFFICE: (408) 879-4000

## TABLE OF CONTENTS

<u>Investment Summary</u>	3
<u>Property Overview</u>	4
<u>Photo Gallery</u>	5
<u>Financial Overview</u>	6
<u>Operating Expenses</u>	6
<u>Rent Roll</u>	7
<u>Plat Map</u>	8
<u>Campbell Profile</u>	9
<u>Aerial Map</u>	10

# 730-750 CAMDEN AVENUE

CAMPBELL, CA 95008



740-750 CAMDEN AVE  
CAMPBELL, CA

740

730

750

Camden Office/Industrial Park is a ±25,052 square foot multi-tenant complex situated on ±1.50 acres. The property has an excellent location in central Campbell just off busy Winchester Boulevard within minutes of Highways 17 and 85 which link various communities within Silicon Valley. Although the property has enjoyed a high level of occupancy over the years, its location, size, and proximity to the Valley Transportation Agency Winchester Light Rail Station may dictate redevelopment to a higher density use in the future.

While the location is ideal and may hold the potential for alternative high-density development in the future, the immediate value of this acquisition lies in its opportunity to increase potential cash flow. Most of all current tenants are paying well below market rent with many of the leases expiring in the next 2 to 3 years. Though most tenants were granted renewal options, most all of the leases specify rent be at fair market. The Campbell light industrial market has been losing inventory over the past decade due to the rezoning of properties to residential uses especially in those areas with proximity to the Valley Transit rail corridor. Thus, demand for smaller light industrial space is great. The eventual rollover of leases provides the investor the opportunity to restructure leases and substantially increase the NOI in the immediate future.

### INVESTMENT HIGHLIGHTS

- Rarely Available for Sale – 14 unit light industrial/office complex
- 90.1% Current Occupancy
- Below Market Rents Offer Upside Potential
- Well Maintained Improvements
- Abundant Parking and Yard Space
- Low Building to Land Ratio of 31.2%
- Excellent Location Near Highway 17 and Winchester Boulevard

<b>OFFERING PRICE</b>	\$8,495,000
<b>PRICE / SF</b>	\$339.10
<b>CAPITALIZATION RATE</b>	4.68%
<b>RENTABLE AREA</b>	25,052
<b>LAND AREA</b>	1.50 Acres
<b>PARCEL NUMBER</b>	412-01-020
<b>YEAR BUILT</b>	1978
<b>PARKING</b>	60 vehicles
<b>OWNERSHIP</b>	Fee Simple

# PROPERTY Overview



**730-750 CAMDEN AVE**  
CAMPBELL, CA

## LOCATION

730-750 Camden Avenue, Campbell, California

## SITE

The property is located near the northeast corner of Camden Avenue and Winchester Boulevard

APN 412-01-020

## LAND AREA

Irregular shaped parcel at grade with approximately 1.5 acres.

## ZONING

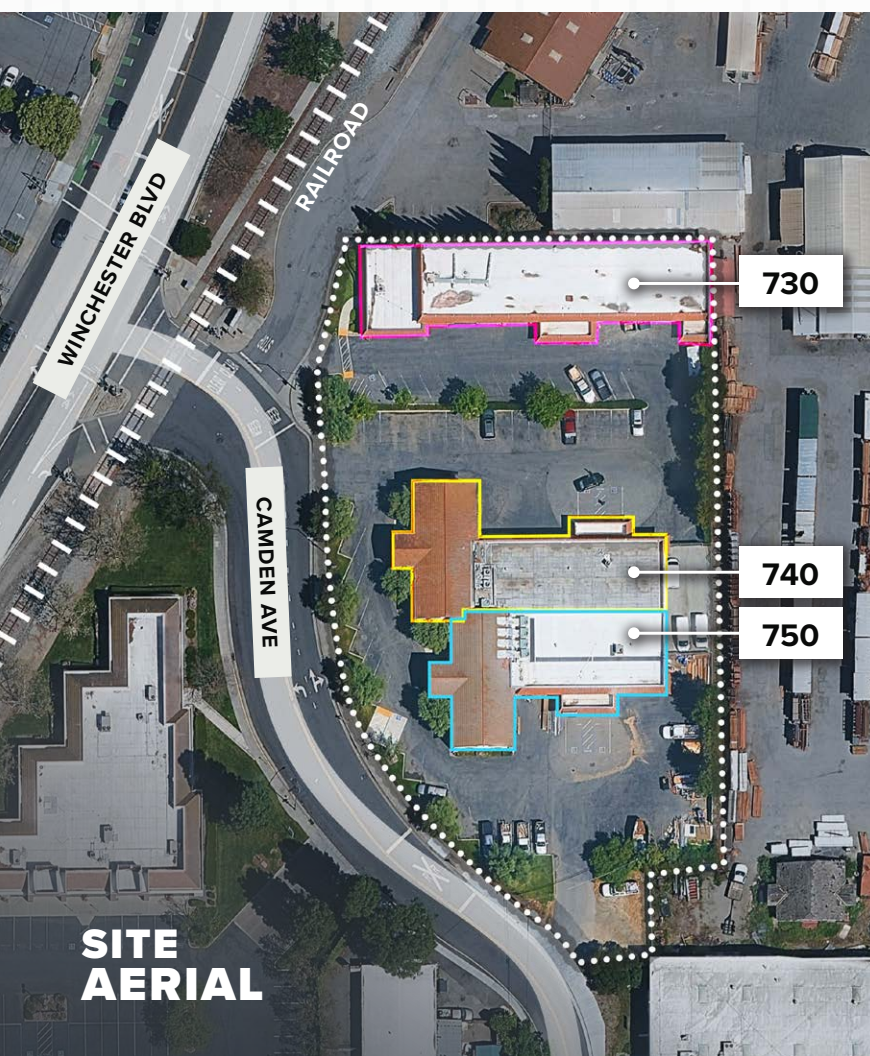
Per the city of Campbell, the site is zoned PD (Planned Development) with a General Plan designation of Commercial/Light Industrial.

## BUILDING AREA

There are three buildings situated on the property. 730 Camden Avenue is single story and is approximately 8,094 rentable square feet and divided into four light industrial spaces each with a 10' x 12' truck door. A large portion of this building is occupied by Slaughterbeck Floors with a showroom and warehouse. 740 Camden Avenue is approximately 7,505 rentable square feet of which about half of the area is built out with professional office space of which a portion is located on the second floor at the front of the building. 750 Camden Avenue is approximately 7,960 square feet and like 740 Camden Avenue, it has second floor office space. The improvements were constructed in 1978 with concrete slab foundation, concrete block wall, and a flat tar and gravel roof. The industrial units have small offices, restrooms, and grade level truck doors. The office portion of 740 and 750 Camden Avenue are built out with private offices, restrooms, drop ceiling, recessed fluorescent lights, and roof mounted HVAC.

## PARKING

Asphalt Paved, striped for 60 vehicles, and lighted. To the rear of 740 and 750, there is fenced yard space which is leased to a couple of tenants. The front of the property is nicely landscaped with mature trees and ground cover.



**SITE  
AERIAL**

# PHOTO Gallery

730-750 CAMDEN AVE  
CAMPBELL, CA



**AERIAL VIEW**



**740 - OFFICE EXTERIOR**



**740-D & E**



**750-C - INDUSTRIAL/WAREHOUSE**



**750-A - OFFICE**



**740-B - OFFICE**

# FINANCIALS Overview

730-750 CAMDEN AVE  
CAMPBELL, CA

<b>SALE PRICE:</b>	\$8,495,000
<b>PRICE PER SF:</b>	\$339.10
<b>CAPITALIZATION RATE:</b>	4.68%

## FINANCIAL OVERVIEW

Scheduled Base Rent	\$494,329.56
Expense Reimbursements	\$85,660.14
Vacancy (3.0%)	\$17,399.69
Effective Gross Income	\$562,590.01
Less Operating Expenses	\$165,081.22
<b>Net Operating Income</b>	<b>\$397,508.79</b>

## OPERATING EXPENSES

Property Taxes (1.2106%)	\$102,840.47
Direct Assessments	\$4,312.26
Insurance	\$20,962.10
CAM	\$36,966.39
<b>Total</b>	<b>\$165,081.22</b>

## NOTES

- <sup>[1]</sup> Taxes are 1.2106% of list price.
- <sup>[2]</sup> Expenses reflect 2026 budget prepared by the property manager.
- <sup>[3]</sup> Vacant rent for the office suite is \$1.50 gross.
- <sup>[4]</sup> According to the leases, tenants are required to reimburse Landlord for their prorata share of CAM and base year increases for property taxes and insurance. Currently only Spaghetti Networks (740-A) and Awake DBT (750-B) are reimbursing for CAM
- <sup>[5]</sup> No management fee is being collected.

## ASSUMPTIONS

- <sup>[1]</sup> Base year taxes are set at \$58,458.98 at time of listing for all tenants. Following the sale, tenants are required to reimburse any increase in base year taxes, which will be calculated as follows:

**\$107,152.73** (Reassessed on list price) - **\$58,458.98** (current taxes) = **\$48,693.75**

- <sup>[2]</sup> Following the sale, tenants are required to reimburse for CAM which is based on 2026 estimate.

# FINANCIALS

# Rent Roll

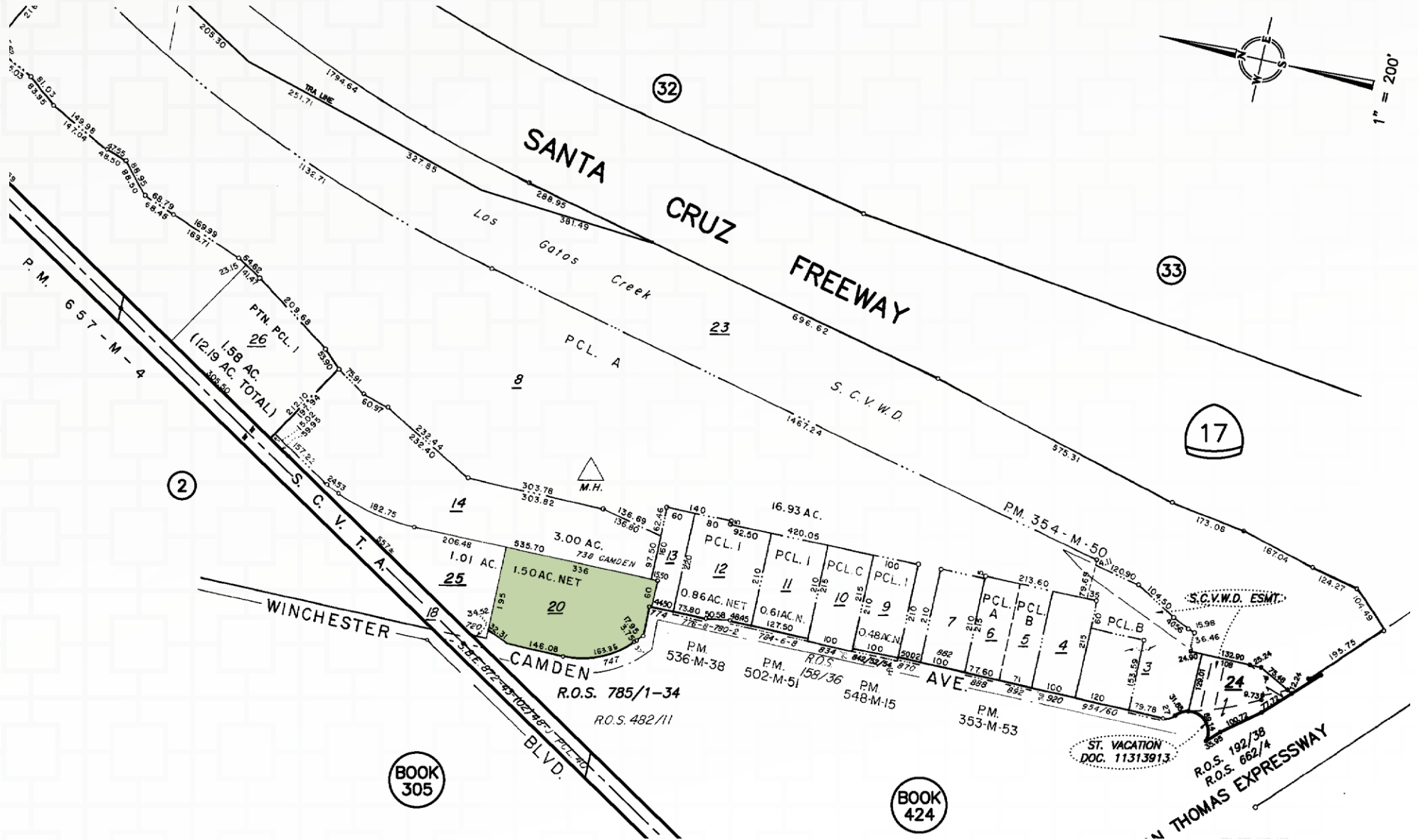
730-750 CAMDEN AVE  
CAMPBELL, CA

SUITE	TENANT	SQUARE FEET	% GLA	LEASE COM-MENCEMENT	LEASE EXPI-RATION	MONTHLY RENT	RENT/SF	SERVICE	ESCALATION	SECURITY DEPOSIT	OPTIONS
<b>730 Camden Avenue</b>											
Suites A, B & C <i>Showroom/Warehouse</i>	Slaughterbeck Floors	4,682	18.7%	7/1/2026	6/30/2029	\$7,826.77	\$1.68	Gross	3% annual	\$7,826.77	None
Suite D	J.T. Masters Construction	1,740	7.0%	8/1/2025	7/31/2028	\$3,053.77	\$1.76	Gross	3% annual	\$1,971.42	One 3-year at FMV
Suite E	Brett Hassett	1,672	6.7%	3/1/2026	2/28/2029	\$2,634.59	\$1.58	Gross	3% annual	\$2,634.59	One 3-year at FMV
<b>740 Camden Avenue</b>											
Suite A <i>First Floor Office</i>	Spaghetti Networks	2,300	9.2%	12/1/2024	1/31/2029	\$3,459.00	\$1.50	Gross	3% annual	\$4,012.44	None
Suite B <i>Second Floor Office</i>	Vacant	2,480	9.9%			\$3,720.00	\$1.50				
Suite C	Slaughterbeck Floors	1,200	4.8%	7/1/2026	6/30/2029	\$1,800.00	\$1.50	Gross	3% annual	\$1,800.00	One 3-year at FMV
Suite D & E	Professional Clean	3,018	12.1%	9/1/2024	8/31/2027	\$5,079.49	\$1.68	Gross	3% annual	\$5,231.88	One 3-year at FMV
<b>750 Camden Avenue</b>											
Suite A <i>First Floor Office</i>	C2 Earth, Inc.	2,200	8.8%	1/1/2022	12/31/2026	\$4,159.65	\$1.89	Gross	3% annual	\$4,159.62	One 5-year at FRV
Suite B <i>Second Floor Office</i>	Awake DBT	2,200	8.8%	3/5/2025	5/4/2030	\$3,300.00	\$1.50	Gross	3% annual	\$1,800.00	None
Suite C	Cal's Garage Doors	1,780	71%	5/1/2023	4/30/2028	\$2,845.95	\$1.60	Gross	3% annual	\$1,302.00	One 5-year at FMV
Suite D	Fish Builders, Inc.	1,780	71%	7/1/2025	6/30/2028	\$3,314.91	\$1.87	Gross	3% annual	\$3,516.78	One 3- year at FMV
<b>TOTAL</b>		25,052	100%			\$41,194.13				\$34,255.50	

APN 412-01-020

# Plat Map

730-750 CAMDEN AVE  
CAMPBELL, CA



# CAMPBELL, CA

## Location

Campbell is one of 15 incorporated cities within Santa Clara County and is bordered on the east and north by San Jose, on the south by Los Gatos and on the west by a portion of Saratoga. Campbell has an affluent and highly educated population of 42,466 residents, 54% of which have a Bachelor's degree or higher, with an average household income of \$161,200. Campbell is a bedroom community with many of its residents being employed in the high-tech industry throughout Silicon Valley. Campbell is a very desirable place to live which is demonstrated by its average house price of over \$1,800,000 (January 2026).

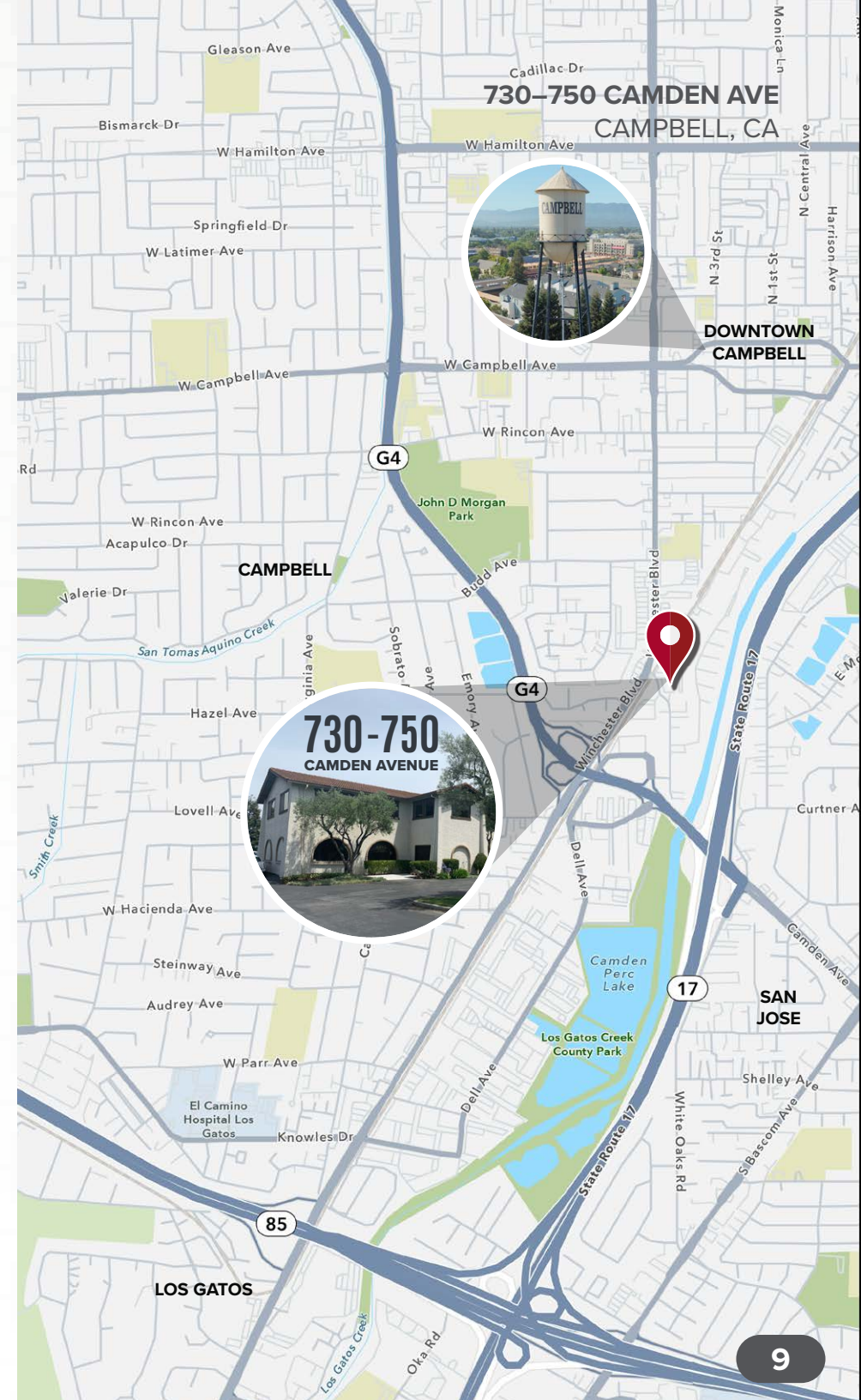
### CAMPBELL TOP EMPLOYERS

8x8 Inc	670
West Valley Construction	411
ZRG Partners LLC	411
Barracuda Networks Inc	315
Imperative Care Inc	300
Golsys, Inc.	300

### DEMOGRAPHICS

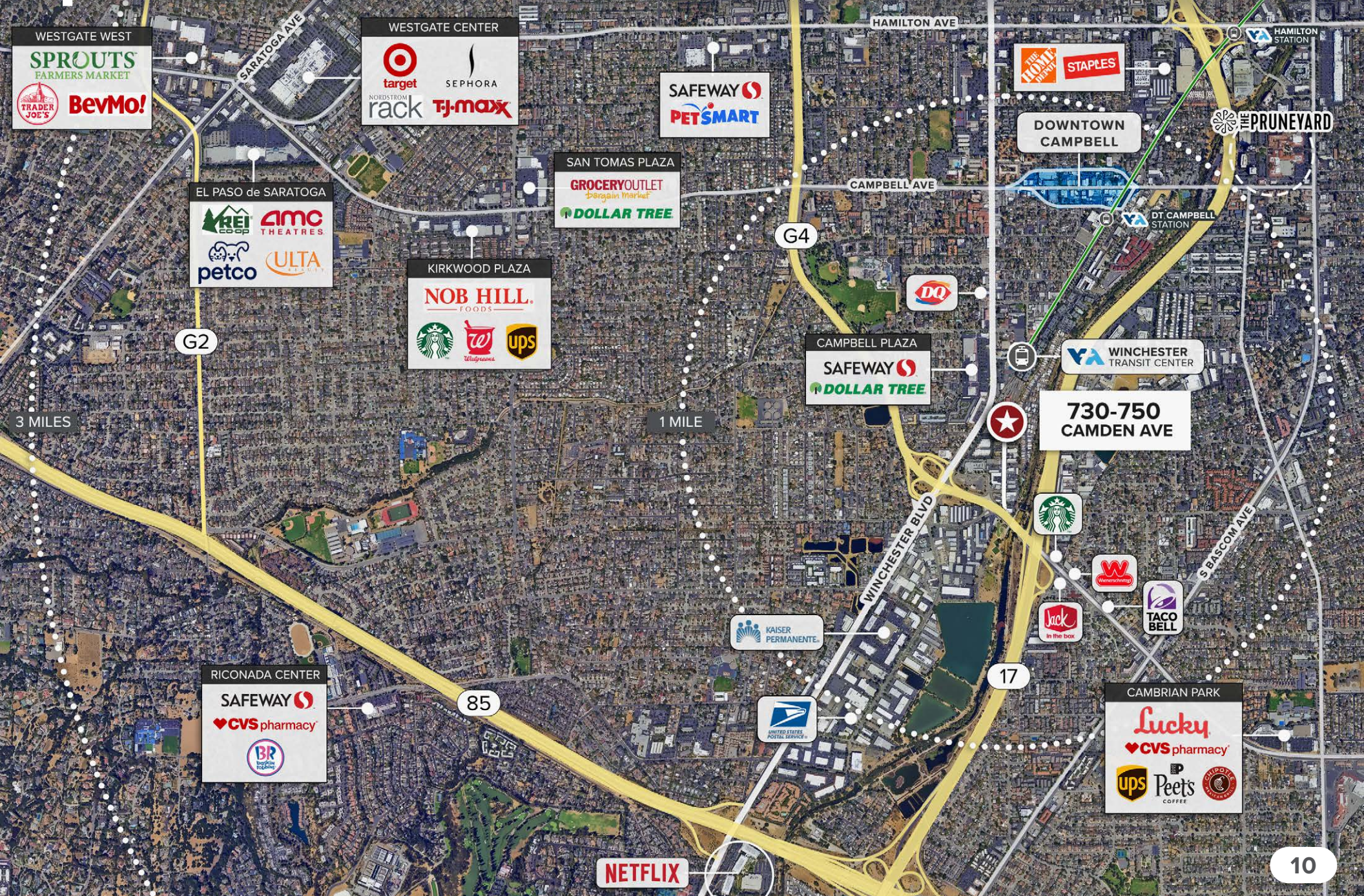
Estimated Population 2020	43,959
Percent Change Since 2010	0.78%
Median Age	40.2
Total Households	17,608
Average People per Household	2.47
Average Household Income	\$206,906
Median Household Income	\$147,128

Source: esri 2026; census.gov; City of Campbell ACFR 2025



# CAMPBELL, CA Aerial Map

740-750 CAMDEN AVE  
CAMPBELL, CA



WESTGATE WEST  
SPROUTS FARMERS MARKET  
TRADER JOE'S  
BevMo!

WESTGATE CENTER  
target  
SEPHORA  
NORDSTROM rack  
TJ-maxx

SAFeway  
PETSMART

THE HOME DEPOT  
STAPLES

EL PASO de SARATOGA  
REI COOP  
AMC THEATRES  
petco  
ULTA BEAUTY

SAN TOMAS PLAZA  
GROCERYOUTLET Bargain Market  
DOLLAR TREE

KIRKWOOD PLAZA  
NOB HILL FOODS  
Starbucks  
Wendy's  
ups

CAMPBELL PLAZA  
SAFeway  
DOLLAR TREE

VTA WINCHESTER TRANSIT CENTER

730-750 CAMDEN AVE

RICONADA CENTER  
SAFeway  
CVS pharmacy  
BR

KAISER PERMANENTE

UNITED STATES POSTAL SERVICE

Starbucks

Wendy's

Jack In the Box

TACO BELL

CAMBRIAN PARK  
Lucky  
CVS pharmacy  
ups  
Peet's COFFEE  
CAMPBELL COFFEE

NETFLIX

## FOR MORE INFORMATION:

### Doug Ferrari

Lic. 02234917

(408) 879-4002

dferrari@primecommercialinc.com

### Dixie Divine

Lic. 00926251 & 01481181

(408) 313-8900


ddivine@primecommercialinc.com



### Prime Commercial, Inc.

1543 Lafayette Street, Suite C  
Santa Clara, CA 95050

 [www.primecommercialinc.com](http://www.primecommercialinc.com)

 OFFICE: (408) 879-4000



Prime Commercial, Incorporated © 2026 • Prime Commercial, Inc. has obtained the information contained herein from sources we deem reliable. However, we have not verified its accuracy and make no guarantee, warranty or representation about it. It is subject to errors, modification, omission, change of price and/or terms, prior lease sale or financing, or withdraw without notice. It may include projections, opinions, or assumptions or estimated for example only, and they may represent current or future performance of the property. You and your tax and legal advisors should conduct your own of the property and transaction. The information provided in this brochure are estimates only, not representations, and are not intended to be relied upon for any purpose. All demographic information contained in this brochure is obtained from Esri 2026 database via STDB.