

# 1543 LAFAYETTE STREET SANTA CLARA, CALIFORNIA



## Features:

- Efficient 1st Floor Unit with Private Restroom
- Located Near the NWC of Lafayette Street & El Camino Real
- Only 3 Blocks from Santa Clara University
- On-Site Covered Parking
- Monument Signage

## Available:

FIRST FLOOR RETAIL, SUITE A

- 450 SQ FT
- Private Restroom
- New Hardwood Flooring
- Modified Gross - Landlord Pays Utilities
- \$2250 / month MG

## Demographics:

	1 Mile	3 Miles	5 Miles
Avg HH Income:	\$132,568	\$156,119	\$157,966
Population:	21,369	178,378	626,570



**Dixie Divine**

408.879.4001

[ddivine@primecommercialinc.com](mailto:ddivine@primecommercialinc.com)

CA BRE 00926251 & 01481181

**Doug Ferrari**

408.879.4002

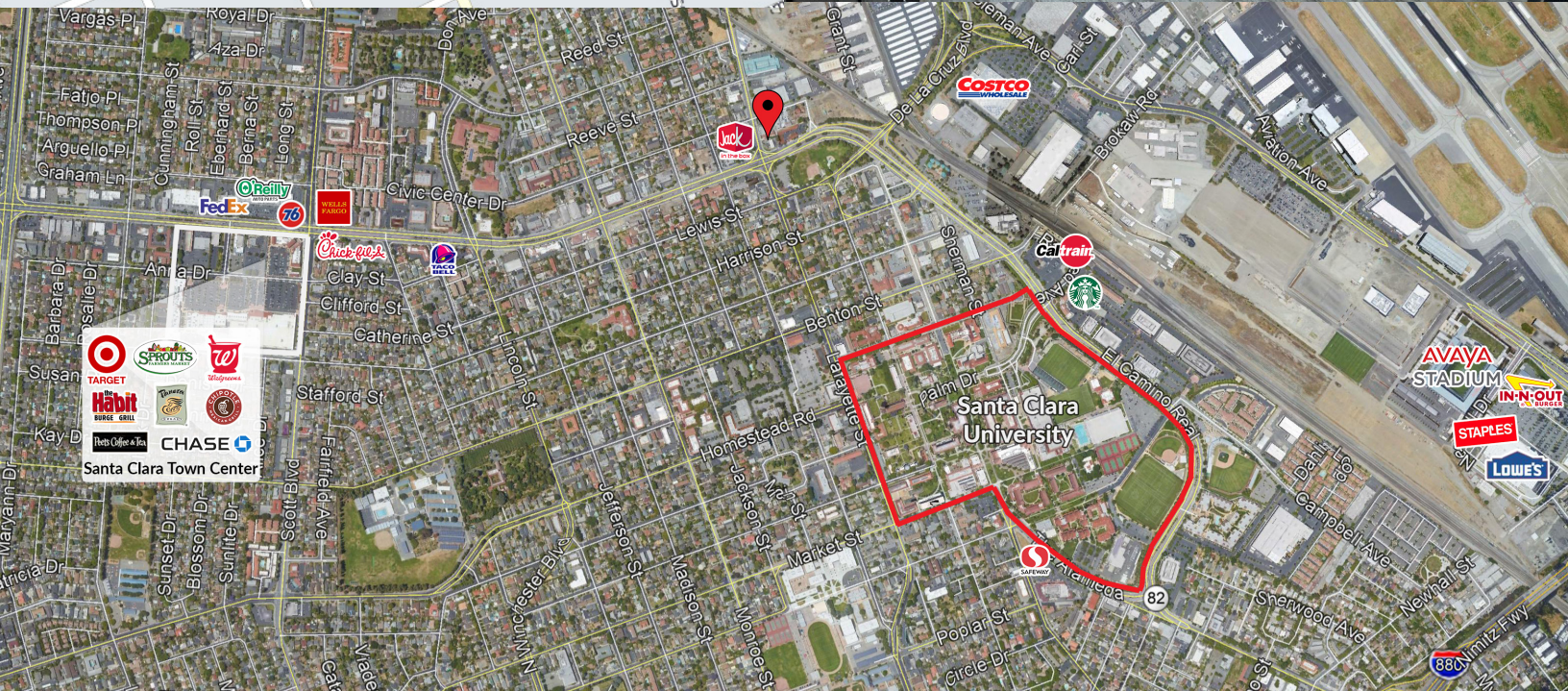
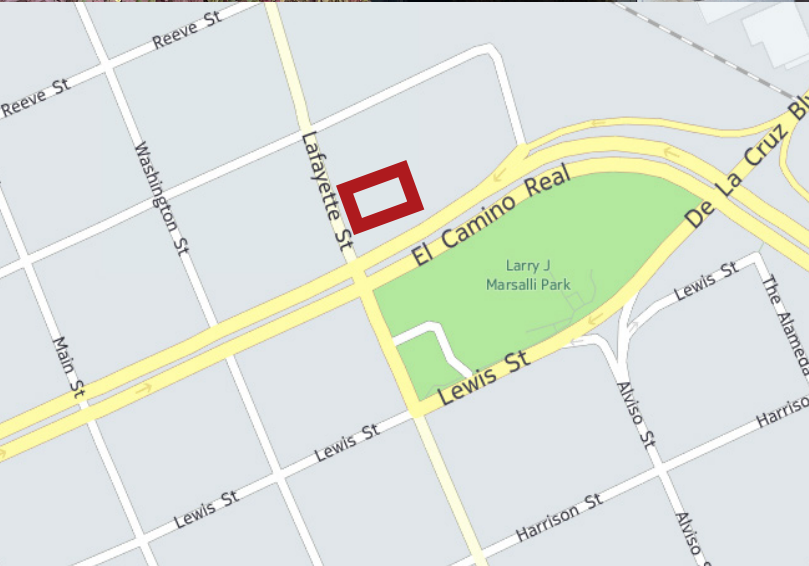
[dferrari@primecommercialinc.com](mailto:dferrari@primecommercialinc.com)

CA BRE 01032363

1543 LAFAYETTE STREET · SUITE C · SANTA CLARA · CA · 95050 | OFFICE 408.879.4000 | FAX 408.879.4004 | [WWW.PRIMECOMMERCIALINC.COM](http://WWW.PRIMECOMMERCIALINC.COM)

Prime Commercial, Inc. has obtained the information contained herein from sources we deem reliable. However, we have not verified its accuracy and make no guarantee, warranty or representation about it. It is subject to errors, modification, omission, change of price and/or terms, prior lease sale or financing, or withdraw without notice. It may include projections, opinions, or assumptions or estimated for example only, and they may represent current or future performance of the property. You and your tax and legal advisors should conduct your own of the property and transaction. The information provided in this brochure are estimates only, not representations, and are not intended to be relied upon for any purpose. All demographic information contained in this brochure is obtained from STDB.





[Redacted Contact Information]

**Dixie Divine**  
 408.879.4001  
 ddivine@primecommercialinc.com  
 CA BRE 00926251 & 01481181

**Doug Ferrari**  
 408.879.4002  
 dferrari@primecommercialinc.com  
 CA BRE 01032363

1543 LAFAYETTE STREET · SUITE C · SANTA CLARA · CA · 95050 | OFFICE 408.879.4000 | FAX 408.879.4004 | WWW.PRIMECOMMERCIALINC.COM

Prime Commercial, Inc. has obtained the information contained herein from sources we deem reliable. However, we have not verified its accuracy and make no guarantee, warranty or representation about it. It is subject to errors, modification, omission, change of price and/or terms, prior lease sale or financing, or withdraw without notice. It may include projections, opinions, or assumptions or estimated for example only, and they may represent current or future performance of the property. You and your tax and legal advisors should conduct your own of the property and transaction. The information provided in this brochure are estimates only, not representations, and are not intended to be relied upon for any purpose. All demographic information contained in this brochure is obtained from STDB.