



FOR SALE
Tahoe Keys Village

585-595 Tahoe Keys Boulevard
South Lake Tahoe, CA 96150

PC **PRIME COMMERCIAL**
INCORPORATED

1543 Lafayette Street, Suite C
Santa Clara, 95050
Office 408.879.4000
www.primecommercialinc.com

DOUG FERRARI
CA BRE 01032363
408.879.4002

dferrari@primecommercialinc.com ddivine@primecommercialinc.com

DIXIE DIVINE
CA BRE 00926251 & 01481181
408.879.4001

Prime Commercial, Inc. has obtained the information contained herein from sources we deem reliable. However, we have not verified its accuracy and make no guarantee, warranty or representation about it. It is subject to errors, modification, omission, change of price and/or terms, prior lease sale or financing, or withdraw without notice. It may include projections, opinions, or assumptions or estimated for example only, and they may represent current or future performance of the property. You and your tax and legal advisors should conduct your own of the property and transaction. The information provided in this brochure are estimates only, not representations, and are not intended to be relied upon for any purpose. All demographic information contained in this brochure is obtained from esri.

CONFIDENTIALITY & DISCLAIMER

Prime Commercial, Inc. has been retained on an exclusive right to sell basis to market 585-595 Tahoe Keys Boulevard, South Lake Tahoe, CA 96150. The information herein distributed by Prime Commercial, Inc. is intended to be viewed only by the parties specifically targeted by Prime Commercial, Inc. The investment package should not be made available to any other parties unless first verified, in writing, by Prime Commercial, Inc. This Investment offering has been prepared to provide a summary, unverified information to prospective purchasers, and to establish only a preliminary level of interest in the subject property. The information contained herein is not a substitute for a thorough due diligence investigation. Prime Commercial, Inc. has not made any investigation, and makes no warranty or representation, with respect to the income or expenses for the subject property, the future projected financial improvements, the presence or absence of contaminating substances, PCB's or asbestos, the compliance with State and Federal regulations, the physical condition of the improvements thereon, or the financial condition or business prospects of any tenant, or any tenant's plans or intentions to continue its occupancy of the subject property. The information contained in this investment offering has been obtained from sources Prime Commercial, Inc., deems reliable; however, Prime Commercial, Inc. has not verified and will not verify any of the information contained herein, nor has Prime Commercial, Inc. conducted any investigation regarding these matters and makes no warranty or representation whatsoever regarding the accuracy or completeness of the information provided. All potential buyers must take the appropriate measures to verify all of the information set forth herein.

The Seller expressly reserves the right, at its sole discretion, to withdraw the Property from the market. Seller and Prime Commercial, Inc. reserves the right, expressed or implied, to reject any offer to purchase the property and to terminate discussions with any person or entity reviewing this offering memorandum until and unless the seller executes and delivers a signed purchase agreement with terms acceptable to the Seller.

TABLE OF CONTENTS

Investment Offering & Investment Highlights 3

Property Overview 4

Additional Photos 5

Site Map 6

Aerial Map - Nearby Retailers 7

South Lake Tahoe Tourism Map 8

Plat Map 9

Site Plan 10

Please Call Agent to Request Financial Information



OFFERING MEMORANDUM
585-595 TAHOE KEYS BLVD.
SOUTH LAKE TAHOE, CA 96150

DOUG FERRARI
Lic. 01032363
408.879.4002
dferrari@primecommercialinc.com

DIXIE DIVINE
Lic. 00926251 & 01481181
408.879.4001
ddivine@primecommercialinc.com

PRIME COMMERCIAL
INCORPORATED

INVESTMENT OFFERING

Prime Commercial, Inc. is pleased to offer for sale Tahoe Keys Village located at 585-595 Tahoe Keys Boulevard in South Lake Tahoe, California. This office/retail center has an irreplaceable location at the waters edge on the Tahoe Keys with beautiful marina, lake and mountain views. The center provides commercial amenities for the more than 1,500 residential units that make up the 740-acre marina community. There are six separate buildings on the site which total approximately 34,652 square feet rentable situated on a level 5.97+/- acre site. The improvements were developed in 1975 and have been very well maintained over the years. In 2023 all building were repainted and a capital improvement project totaling over \$1,750,000 was completed that included all new hardscape, drainage, and landscaping as well as some of the parking lots replaced. During this time, most all of the existing leases were renewed with the added benefit of the expense service being converted to triple-net.

Tahoe Keys Village may also have the potential in the future to be redeveloped with a higher intensity use taking advantage of its picturesque location on the water in an affluent residential community near water activities, hiking, and skiing. Currently, rents being received at Tahoe Keys Village are competitive with the broader market in South Lake Tahoe and there is further opportunity for increasing cash flows as the vacant units become absorbed. Thus, the property has the ability to support itself financially as other options for the property can be explored if so desired.

INVESTMENT HIGHLIGHTS

- Irreplaceable Location with Beautiful Water Views
- Recent Repairs and Capital Improvements Already Done
- 14 Boat Slips Included in the Adjacent Marina is Bonus Income
- Most All Leases Have Been Converted to NNN
- Highly Visible Site with Excellent Ingress/Egress
- Fee Simple and Unencumbered Allows the Investor Attractive Financing Options
- Large 5.97+- Site Holds the Potential for Redevelopment in the Future

OFFERING MEMORANDUM
585-595 TAHOE KEYS BLVD.
SOUTH LAKE TAHOE, CA 96150

DOUG FERRARI
Lic. 01032363
408.879.4002
dferrari@primecommercialinc.com

DIXIE DIVINE
Lic. 00926251 & 01481181
408.879.4001
ddivine@primecommercialinc.com

 **PRIME COMMERCIAL**
INCORPORATED

PROPERTY OVERVIEW

PROPERTY NAME

Tahoe Keys Village

PROPERTY ADDRESS

585-595 Tahoe Keys Blvd.
South Lake Tahoe, El Dorado County, California

PROPERTY LOCATION

Northeast Corner of Tahoe Keys Boulevard and Venice Drive

ASSESSOR'S PARCEL NUMBER

022-210-030

LAND AREA

260,053± Square Feet (5.97± Acres)

IMPROVEMENTS

Six Commercial Buildings Totaling 34,652± Square Feet Rentable

Building A	3,142± Square Feet Rentable
Building B	3,113
Building C	4,859
Building D	8,889
Building E	9,030
Building F	5,619
Storage	97± Square Feet

14 Boat Slips at Tahoe Keys Marina

PARKING

Asphalt Paved, Lighted and Striped for 156 Vehicles

OFFERING PRICE

\$8,295,000

OFFERING MEMORANDUM

585-595 TAHOE KEYS BLVD.
SOUTH LAKE TAHOE, CA 96150

DOUG FERRARI

Lic. 01032363

408.879.4002

dferrari@primecommercialinc.com

DIXIE DIVINE

Lic. 00926251 & 01481181

408.879.4001

ddivine@primecommercialinc.com

PRIME COMMERCIAL
INCORPORATED



ADDITIONAL PHOTOS



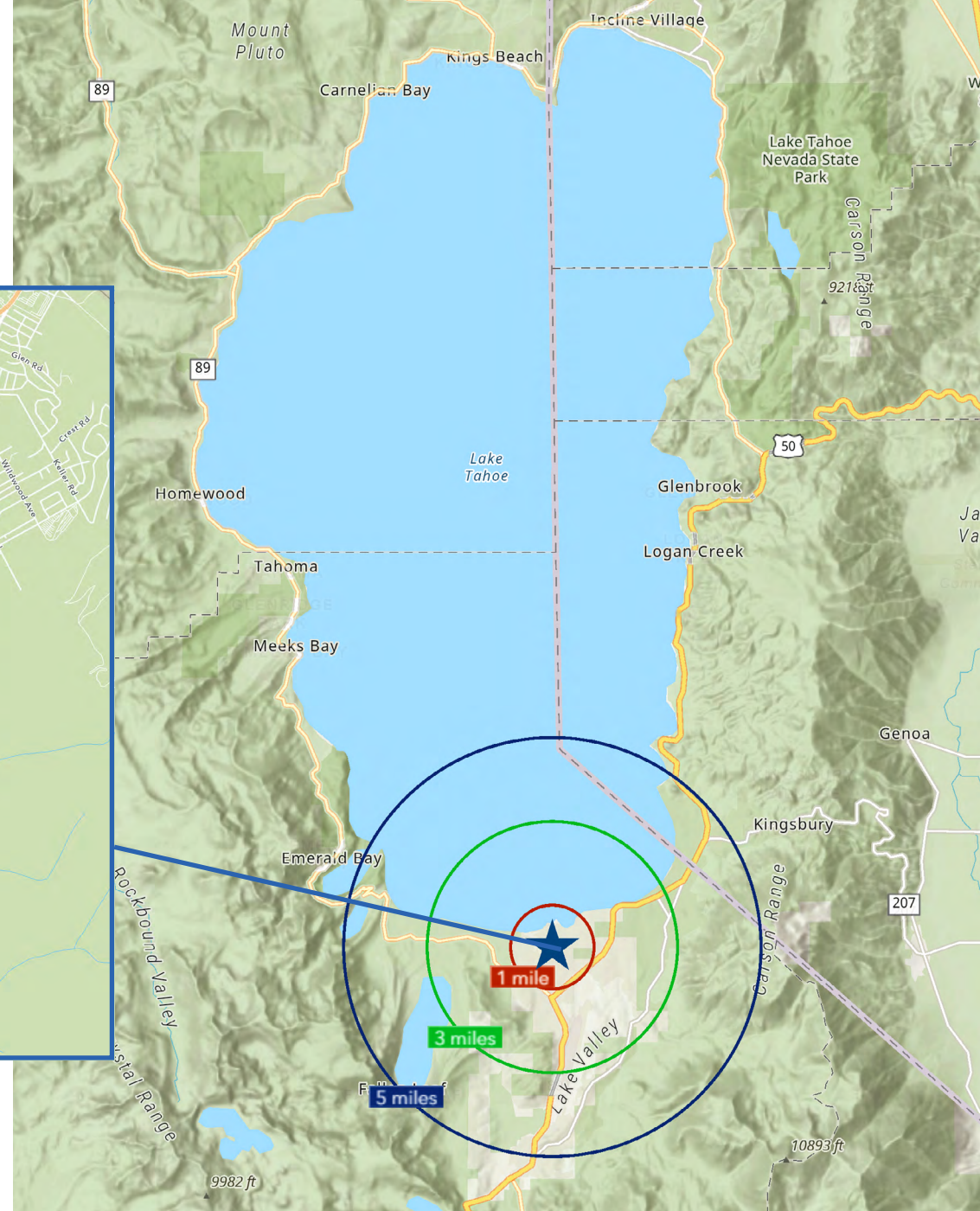
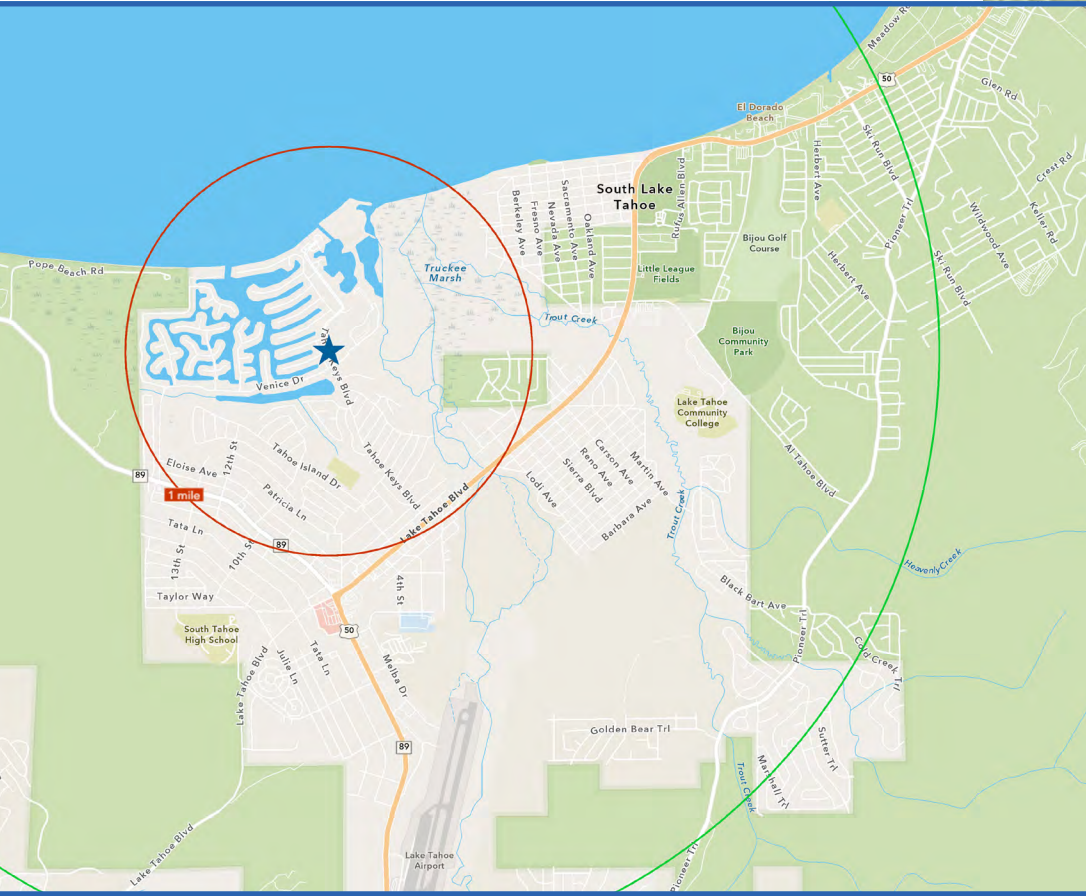
OFFERING MEMORANDUM
585-595 TAHOE KEYS BLVD.
SOUTH LAKE TAHOE, CA 96150

DOUG FERRARI
 Lic. 01032363
 408.879.4002
dferrari@primecommercialinc.com

DIXIE DIVINE
 Lic. 00926251 & 01481181
 408.879.4001
ddivine@primecommercialinc.com

PRIME COMMERCIAL
 INCORPORATED

SITE MAP



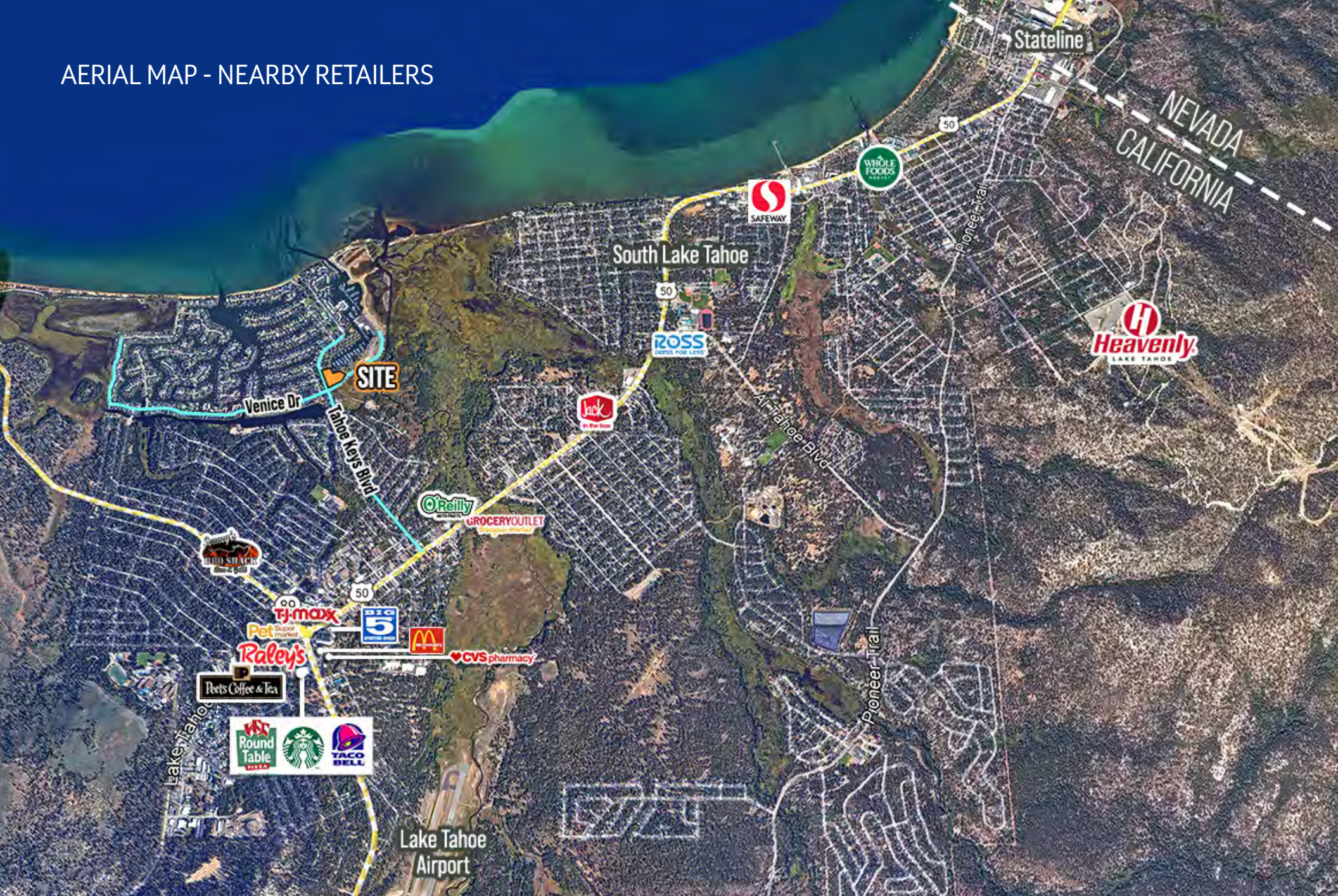
OFFERING MEMORANDUM
585-595 TAHOE KEYS BLVD.
SOUTH LAKE TAHOE, CA 96150

DOUG FERRARI
 Lic. 01032363
 408.879.4002
dferrari@primecommercialinc.com

DIXIE DIVINE
 Lic. 00926251 & 01481181
 408.879.4001
ddivine@primecommercialinc.com

PRIME COMMERCIAL
 INCORPORATED

AERIAL MAP - NEARBY RETAILERS



OFFERING MEMORANDUM
585-595 TAHOE KEYS BLVD.
SOUTH LAKE TAHOE, CA 96150

DOUG FERRARI
Lic. 01032363
408.879.4002
dferrari@primecommercialinc.com

DIXIE DIVINE
Lic. 00926251 & 01481181
408.879.4001
ddivine@primecommercialinc.com

PRIME COMMERCIAL
INCORPORATED

SOUTH LAKE TAHOE TOURISM MAP



OFFERING MEMORANDUM
585-595 TAHOE KEYS BLVD.
SOUTH LAKE TAHOE, CA 96150

DOUG FERRARI
Lic, 01032363
408.879.4002
dferrari@primecommercialinc.com

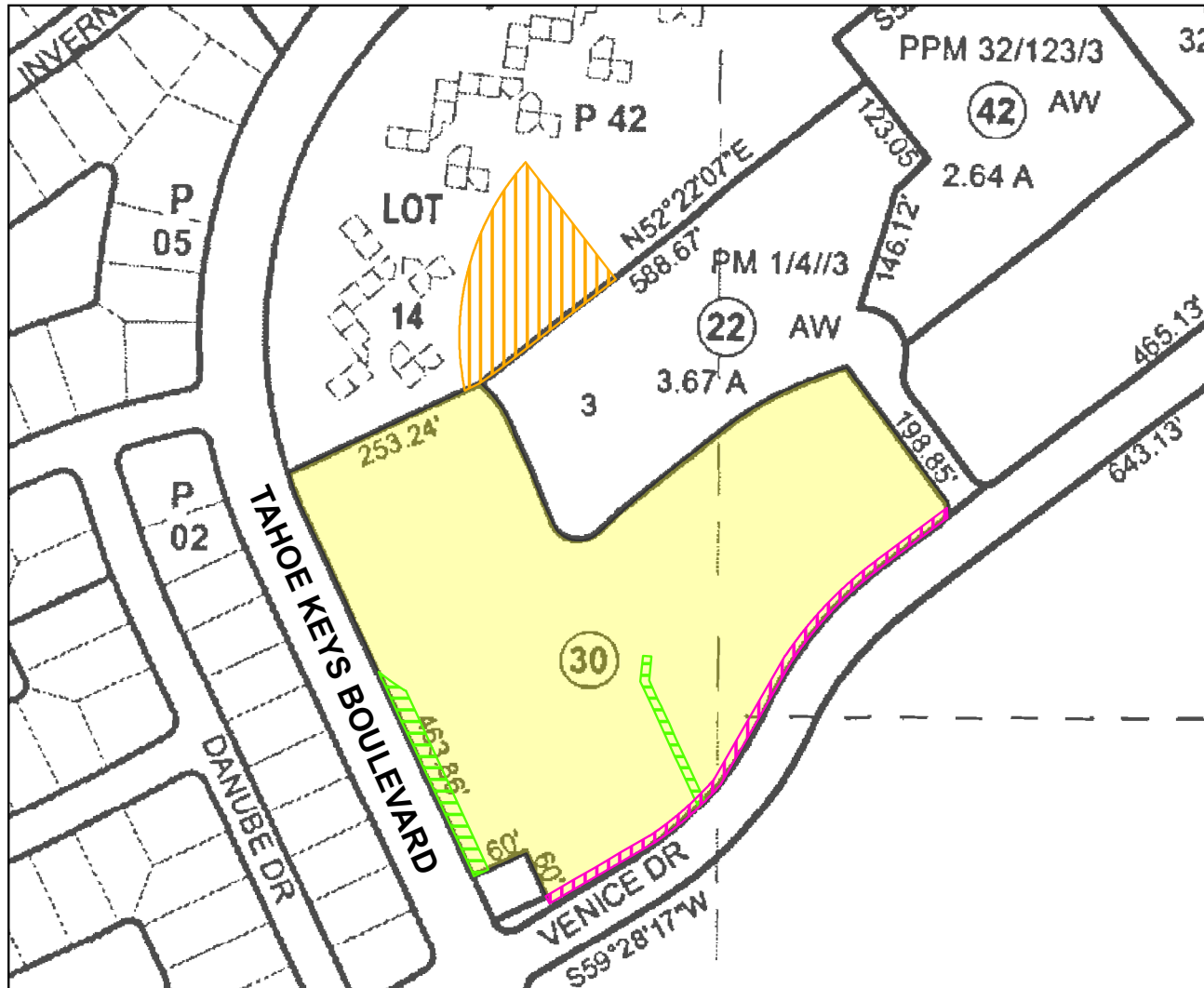
DIXIE DIVINE
Lic. 00926251 & 01481181
408.879.4001
ddivine@primecommercialinc.com



PRIME COMMERCIAL
INCORPORATED

PLAT MAP

1 inch = 202.93 feet



Legend

- PARCEL 1 - Property In Question - Fee
- PARCEL 2 - Easement
 - Item No. 10 - Easement for Ingress & Egress
In 05/15/1957 Bk405 Pg475
& 11/14/1960 Bk529 Pg357 of Official Records
The exact location of the easement cannot be determined and is not plottable
 - Item No. 11 - Easement for Ingress & Egress
In 07/30/1957 Bk411 Pg271
& Bk529 Pg357 of Official Records
The exact location of the easement cannot be determined and is not plottable
 - Item No. 12 - Easement for Water Pipeline
In 12/22/1971 Bk1095 Pg253 of Official Records
Affects said portion as described in the document
 - Item No. 13 - Easement for Public Utilities
In 04/10/1972 Bk1116 Pg37 of Official Records
Affects said portion as described in the document

©2024
Chicago Title Company
 1200 Concord Ave., #400
 Concord, CA 94520
 (925) 288-8000

This map/plat is being furnished as an aid in locating the herein described Land in relation to adjoining streets, natural boundaries and other land, and is not a survey of the land depicted. Except to the extent a policy of title insurance is expressly modified by endorsement, if any, the Company does not insure dimensions, distances, location of easements, acreage or other matters shown thereon.

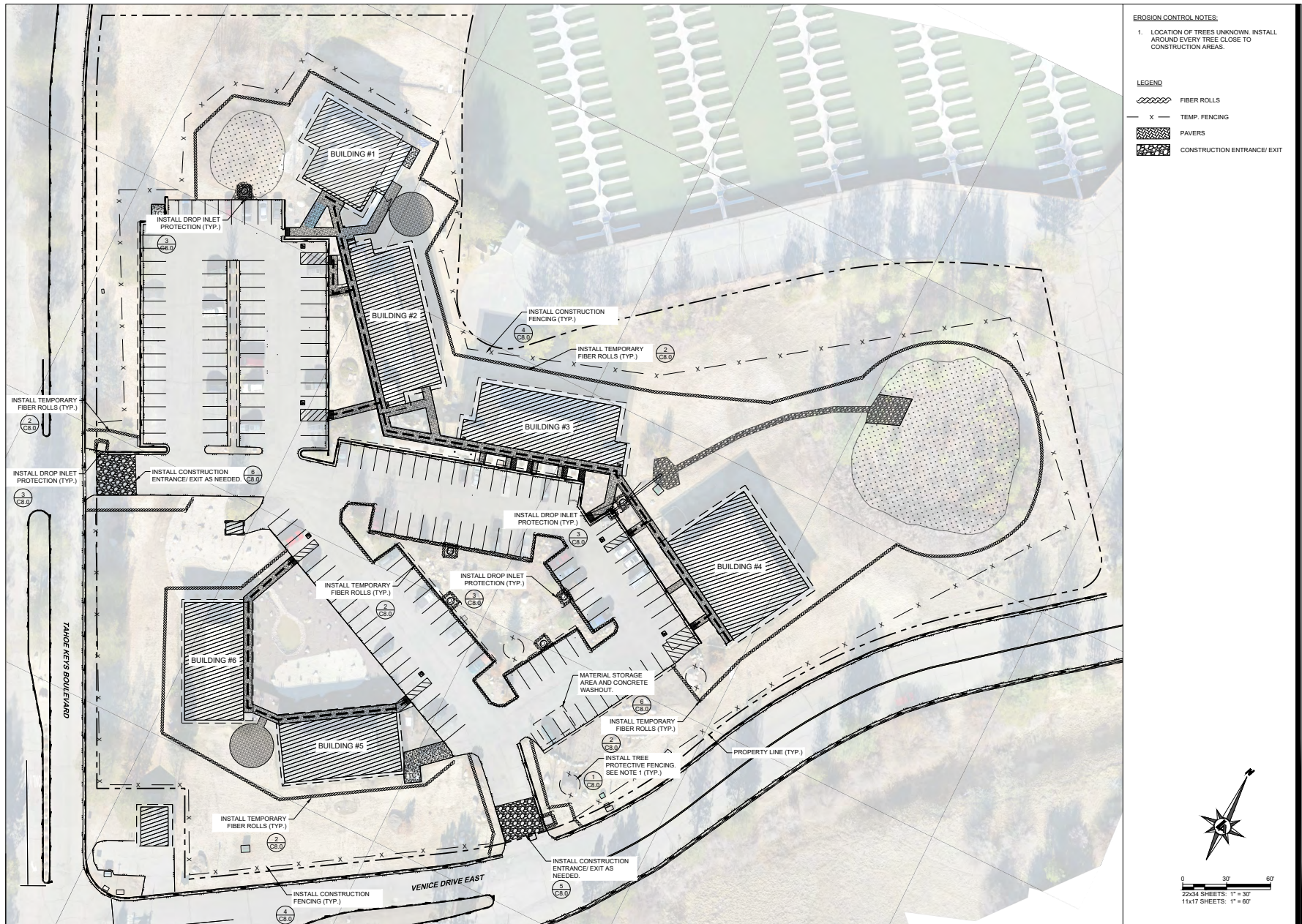
OFFERING MEMORANDUM
 585-595 TAHOE KEYS BLVD.
 SOUTH LAKE TAHOE, CA 96150

DOUG FERRARI
 Lic. 01032363
 408.879.4002
 dferrari@primecommercialinc.com

DIXIE DIVINE
 Lic. 00926251 & 01481181
 408.879.4001
 ddivine@primecommercialinc.com

PRIME COMMERCIAL
 INCORPORATED

SITE PLAN



OFFERING MEMORANDUM
585-595 TAHOE KEYS BLVD.
SOUTH LAKE TAHOE, CA 96150

DOUG FERRARI
 Lic. 01032363
 408.879.4002
 dferrari@primecommercialinc.com

DIXIE DIVINE
 Lic. 00926251 & 01481181
 408.879.4001
 ddivine@primecommercialinc.com

PRIME COMMERCIAL
 INCORPORATED

Prime Commercial, Inc. has obtained the information contained herein from sources we deem reliable. However, we have not verified its accuracy and make no guarantee, warranty or representation about it. It is subject to errors, modification, omission, change of price and/or terms, prior lease sale or financing, or withdraw without notice. It may include projections, opinions, or assumptions or estimated for example only, and they may represent current or future performance of the property. You and your tax and legal advisors should conduct your own of the property and transaction. The information provided in this brochure are estimates only, not representations, and are not intended to be relied upon for any purpose. All demographic information contained in this brochure is obtained from esri.



FOR SALE

Tahoe Keys Village

285-595 Tahoe Keys Boulevard, South Lake Tahoe

PC INC **PRIME COMMERCIAL**
INCORPORATED

1543 Lafayette Street, Suite C
Santa Clara, 95050
Office 408.879.4000
www.primecommercialinc.com

DOUG FERRARI
CA BRE 01032363
408.879.4002

dferrari@primecommercialinc.com

DIXIE DIVINE
CA BRE 00926251 & 01481181
408.879.4001

ddivine@primecommercialinc.com

Prime Commercial, Inc. has obtained the information contained herein from sources we deem reliable. However, we have not verified its accuracy and make no guarantee, warranty or representation about it. It is subject to errors, modification, omission, change of price and/or terms, prior lease sale or financing, or withdraw without notice. It may include projections, opinions, or assumptions or estimated for example only, and they may represent current or future performance of the property. You and your tax and legal advisors should conduct your own of the property and transaction. The information provided in this brochure are estimates only, not representations, and are not intended to be relied upon for any purpose. All demographic information contained in this brochure is obtained from esri.