



415 E. Campbell Avenue
Campbell, CA 95008



 **PRIME COMMERCIAL**
INCORPORATED

Dixie Divine

408.879.4001

ddivine@primecommercialinc.com

CA BRE 00926251 & 01481181

Doug Ferrari

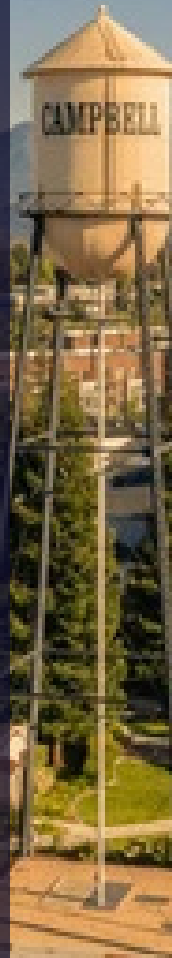
408.879.4002

dferrari@primecommercialinc.com

CA BRE 01032363

Property Highlights

- 1,470 SF ground floor retail space available July 2024
- Prominent identity at the entrance to Downtown Campbell
- New 2024 building renovation
- Numerous dining and entertainment options along E. Campbell Avenue
- Versatile floorplan for a variety of retail uses



www.primecommercialinc.com

1543 Lafayette Street Suite C
Santa Clara · CA · 95050
Office 408.879.4000
Fax 408.879.4004

Dixie Divine

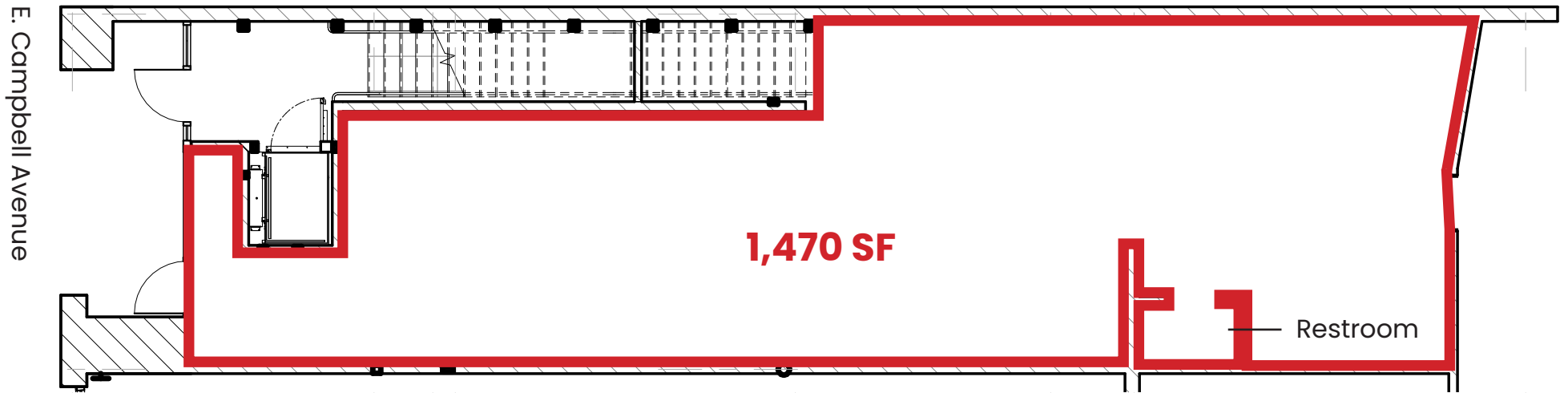
408.879.4001
ddivine@primecommercialinc.com
CA BRE 00926251 & 01481181

Doug Ferrari

408.879.4002
dferrari@primecommercialinc.com
CA BRE 01032363

Site Plan

1,470 SF For Lease



www.primecommercialinc.com

1543 Lafayette Street Suite C
Santa Clara · CA · 95050
Office 408.879.4000
Fax 408.879.4004

Dixie Divine

408.879.4001
ddivine@primecommercialinc.com
CA BRE 00926251 & 01481181

Doug Ferrari

408.879.4002
dferrari@primecommercialinc.com
CA BRE 01032363

Downtown Campbell Map



PRIME COMMERCIAL
INCORPORATED
www.primecommercialinc.com

1543 Lafayette Street Suite C
Santa Clara · CA · 95050
Office 408.879.4000
Fax 408.879.4004

Dixie Divine
408.879.4001
ddivine@primecommercialinc.com
CA BRE 00926251 & 01481181

Doug Ferrari
408.879.4002
dferrari@primecommercialinc.com
CA BRE 01032363

Area Map



PRIME COMMERCIAL
INCORPORATED
www.primecommercialinc.com

1543 Lafayette Street Suite C
Santa Clara · CA · 95050
Office 408.879.4000
Fax 408.879.4004

Dixie Divine
408.879.4001
ddivine@primecommercialinc.com
CA BRE 00926251 & 01481181

Doug Ferrari
408.879.4002
dferrari@primecommercialinc.com
CA BRE 01032363

For More Information, Please Contact

Dixie Divine

408.879.4001

ddivine@primecommercialinc.com

CA BRE 00926251 & 01481181

Doug Ferrari

408.879.4002

dferrari@primecommercialinc.com

CA BRE 01032363



PRIME COMMERCIAL
INCORPORATED



PRIME COMMERCIAL
INCORPORATED

www.primecommercialinc.com

1543 Lafayette Street Suite C

Santa Clara · CA · 95050

Office 408.879.4000

Fax 408.879.4004

Dixie Divine

408.879.4001

ddivine@primecommercialinc.com

CA BRE 00926251 & 01481181

Doug Ferrari

408.879.4002

dferrari@primecommercialinc.com

CA BRE 01032363