

# For Lease

1902 N. Capitol Avenue  
San Jose, California 95131

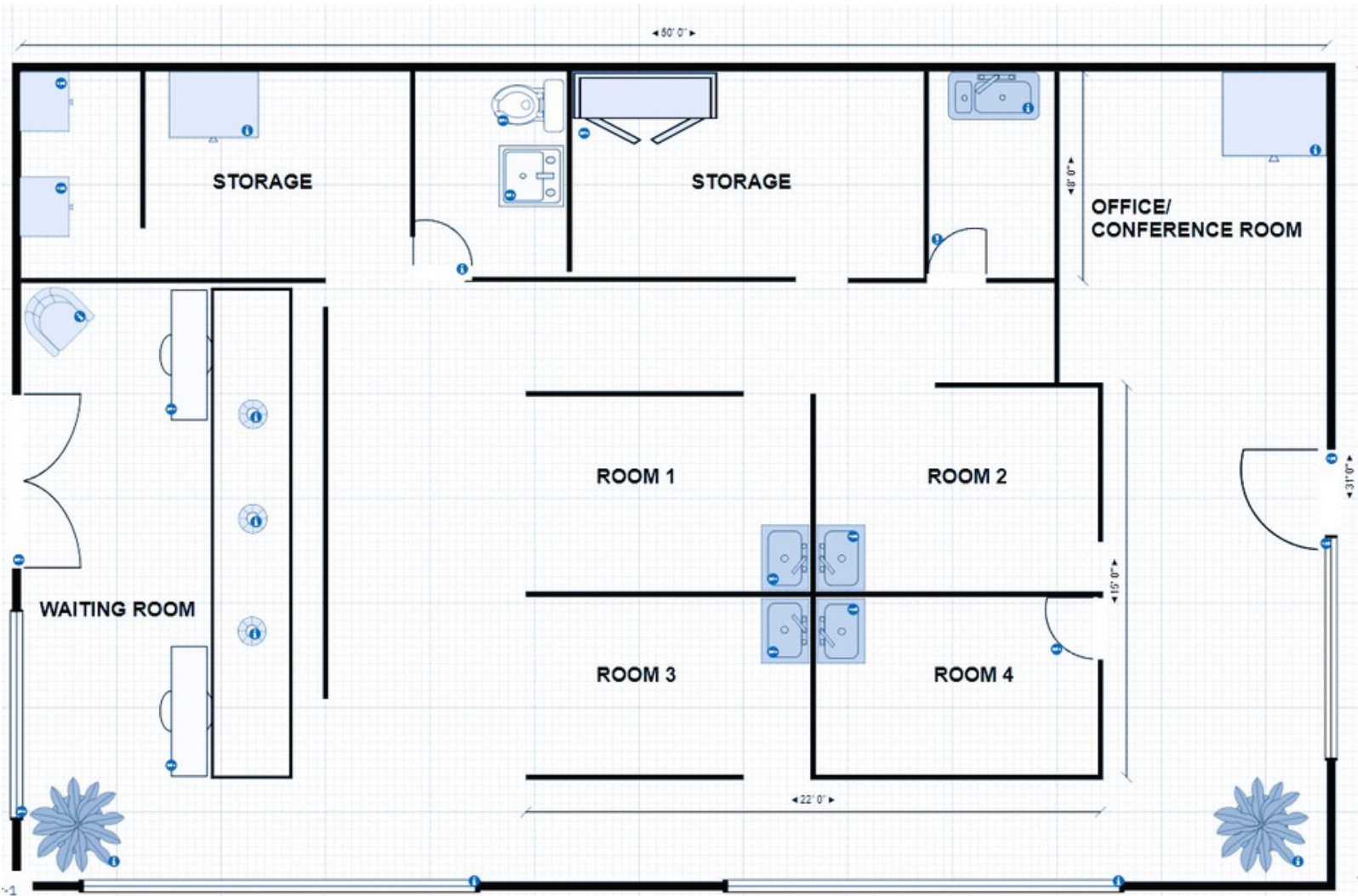
## FEATURES:

- ✓ 1,490 sq. ft. Medical Office Space
- ✓ Currently Built Out as a Dental Office
- ✓ 4 Operatories
- ✓ 17 On-Site Parking Spaces
- ✓ Excellent Location Near the Great Mall
- ✓ Asking \$4.00 / SF / Month

## DEMOGRAPHICS & TRAFFIC COUNTS

	1 Mile	3 Miles	5 Miles
<b>Population:</b>	27,470	182,350	420,848
<b>Average Household Income:</b>	\$204,889	\$197,660	\$178,435
<b>N. Capitol Avenue:</b>	31,000 ADT		
<b>Cropley Avenue:</b>	26,000 ADT		

# SITE PLAN





# SURROUNDING RETAILERS

