

# TWO UNIT RETAIL BUILDING FOR SALE

860-870 S. Bascom Avenue  
San Jose, California



**PRIME COMMERCIAL**  
INCORPORATED

1543 Lafayette Street, Suite C  
Santa Clara, 95050  
Office 408.879.4000  
[www.primecommercialinc.com](http://www.primecommercialinc.com)

DOUG FERRARI  
CA BRE 01032363  
408.879.4002

[dferrari@primecommercialinc.com](mailto:dferrari@primecommercialinc.com)

DIXIE DIVINE  
CA BRE 00926251 & 01481181  
408.879.4001

[ddivine@primecommercialinc.com](mailto:ddivine@primecommercialinc.com)

Prime Commercial, Inc. has obtained the information contained herein from sources we deem reliable. However, we have not verified its accuracy and make no guarantee, warranty or representation about it. It is subject to errors, modification, omission, change of price and/or terms, prior lease sale or financing, or withdraw without notice. It may include projections, opinions, or assumptions or estimated for example only, and they may represent current or future performance of the property. You and your tax and legal advisors should conduct your own of the property and transaction. The information provided in this brochure are estimates only, not representations, and are not intended to be relied upon for any purpose. All demographic information contained in this brochure is obtained from STDB.

# CONFIDENTIALITY & DISCLAIMER

Prime Commercial, Inc. has been retained on an exclusive right to sell basis to market 860-870 S. Bascom Avenue, San Jose. The information herein distributed by Prime Commercial, Inc. is intended to be viewed only by the parties specifically targeted by Prime Commercial, Inc. The investment package should not be made available to any other parties unless first verified, in writing, by Prime Commercial, Inc. This Investment offering has been prepared to provide a summary, unverified information to prospective purchasers, and to establish only a preliminary level of interest in the subject property. The information contained herein is not a substitute for a thorough due diligence investigation. Prime Commercial, Inc. has not made any investigation, and makes no warranty or representation, with respect to the income or expenses for the subject property, the future projected financial improvements, the presence or absence of contaminating substances, PCB's or asbestos, the compliance with State and Federal regulations, the physical condition of the improvements thereon, or the financial condition or business prospects of any tenant, or any tenant's plans or intentions to continue its occupancy of the subject property. The information contained in this investment offering has been obtained from sources Prime Commercial, Inc., deems reliable; however, Prime Commercial, Inc. has not verified and will not verify any of the information contained herein, nor has Prime Commercial, Inc. conducted any investigation regarding these matters and makes no warranty or representation whatsoever regarding the accuracy or completeness of the information provided. All potential buyers must take the appropriate measures to verify all of the information set forth herein.

The Seller expressly reserves the right, at its sole discretion, to withdraw the Property from the market. Seller and Prime Commercial, Inc. reserves the right, expressed or implied, to reject any offer to purchase the property and to terminate discussions with any person or entity reviewing this offering memorandum until and unless the seller executes and delivers a signed purchase agreement with terms acceptable to the Seller.

FOR SALE  
860-870 S. BASCOM AVENUE  
SAN JOSE, CALIFORNIA

DOUG FERRARI  
CA BRE 01032363  
408.879.4002  
dferrari@primecommercialinc.com

DIXIE DIVINE  
CA BRE 00926251 & 01481181  
408.879.4001  
ddivine@primecommercialinc.com

# TABLE OF CONTENTS

Investment Summary.....	3
Property Offering.....	3
Property Overview.....	4
Land & Trade Area.....	5
Santa Clara County.....	5
Area Map.....	6
Aerial Map.....	7
Plat Map .....	8
Rent Roll.....	9
Operating Expenses.....	9
Reimbursements.....	9
Financial Overview.....	9

## INVESTMENT SUMMARY

Offering Price	\$2,495,000
Building Area	4,236 SF Gross
Land Area	0.315 Acres
Year Built	1971
On-Site Parking	19 Spaces
Ownership	Fee Simple
Tenancy	100% Occupied



**FOR SALE**  
**860-870 S. BASCOM AVENUE**  
**SAN JOSE, CALIFORNIA**

**DOUG FERRARI**  
CA BRE 01032363  
408.879.4002  
dferrari@primecommercialinc.com

**DIXIE DIVINE**  
CA BRE 00926251 & 01481181  
408.879.4001  
ddivine@primecommercialinc.com

## PROPERTY OFFERING

Prime Commercial, Inc. is pleased to offer 860-870 S. Bascom Avenue for sale in San Jose, California. This single-story, two-unit retail building lies along heavily trafficked South Bascom Avenue directly across from Santa Clara County Valley Medical Center and just one block south of San Jose City College. The building has been leased for many years to Subway and H & R Block. 860-870 South Bascom Avenue provides the investor a solid in-fill location within west San Jose, a well-maintained building with ease of management and investment growth by increasing cash flow by bringing actual rents to market level.

## PROPERTY HIGHLIGHTS

- Two-unit retail building
- High identity location near Valley Medical Center / San Jose City College / U.S HWY 280
- Well maintained building & parking lot
- On-Site parking for 19 vehicles
- Value Add Opportunity

# PROPERTY OVERVIEW

## LOCATION

860-870 S. Bascom Avenue  
San Jose, California 95128

## SITE

The subject is located on the east side of S. Bascom Avenue.  
APN 282-42-034 and 282-42-035

## LAND AREA

Rectangular parcel totalling 13,728 Square Feet.

## BUILDING AREA

860-870 S. Bascom Avenue is a single-story, two-unit retail building that was constructed in 1971. Construction features concrete slab foundation, concrete block walls and a hip roof with glue lam rafters and covered with asphalt shingles. Windows and storefront systems are anodized aluminum with tinted glazing. Gross building size is approximately 4,236 square feet. Interiors represent the corporate identity of each tenant and have been remodeled over the years.

## PARKING

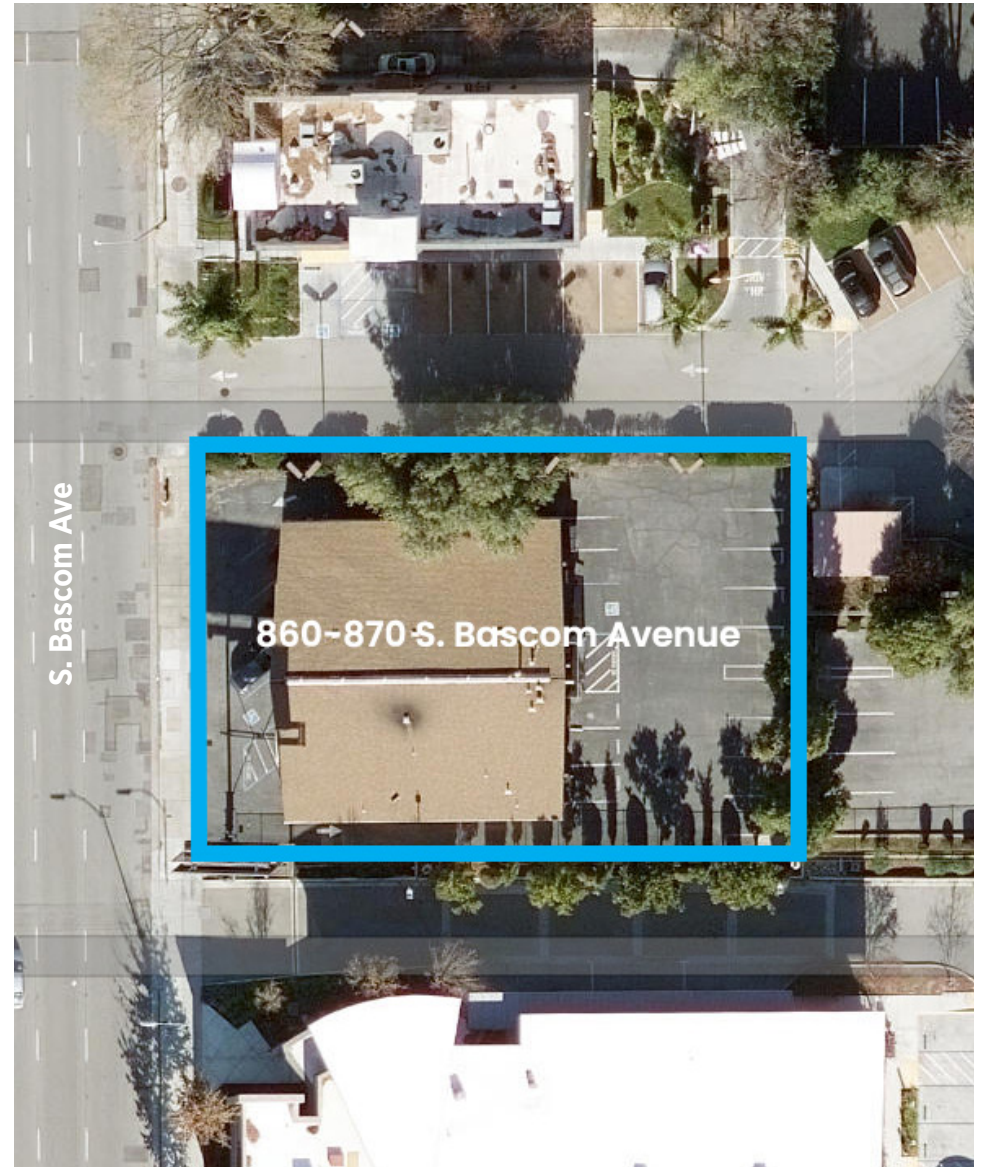
On-site, private lot for 19 vehicles including two handicap

## TRAFFIC COUNTS

S. Bascom Ave.	29,460 ADT
Fruitdale Ave.	13,680 ADT

## ZONING

Per the city of San Jose, the subject site is currently zoned as CP (Commercial Pedestrian) with General Plan Designation of Urban Village Commercial.



## FOR SALE

860-870 S. BASCOM AVENUE  
SAN JOSE, CALIFORNIA

## DOUG FERRARI

CA BRE 01032363  
408.879.4002  
dferrari@primecommercialinc.com

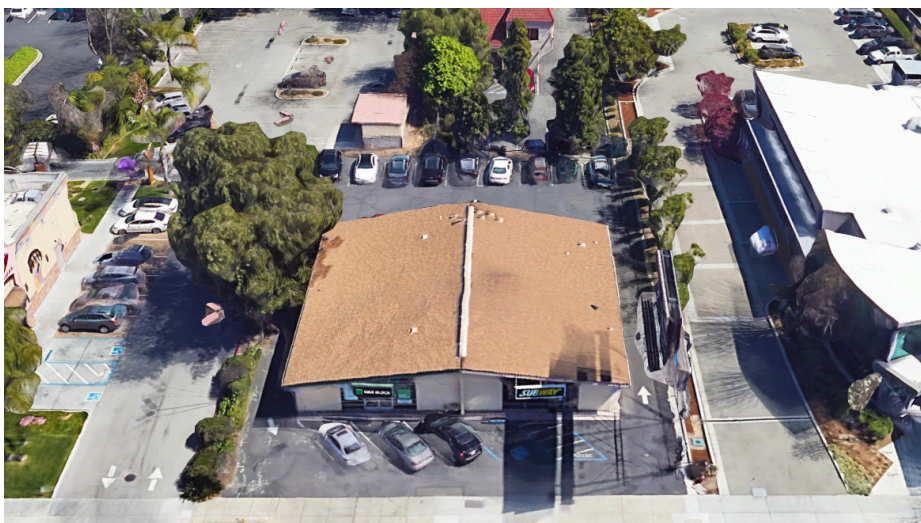
## DIXIE DIVINE

CA BRE 00926251 & 01481181  
408.879.4001  
ddivine@primecommercialinc.com

**PRIME COMMERCIAL**  
INCORPORATED

## LAND & TRADE AREA

860-870 S. Bascom Avenue is located in West San Jose, approximately 2.5 miles southwest of Downtown San Jose and approximately 3.0 miles south of Minetta International Airport. San Jose is the largest city in Northern California with an estimated population of 1,021,795 and is the third largest city in California behind Los Angeles and San Diego and the tenth largest city in the United States. San Jose is more commonly referred to a “the Capital of Silicon Valley” with its booming high-tech industries that make up the economic engine of the region. The immediate neighborhood is primarily developed with retail strip centers, office buildings, single family residences as well as low-rise garden style apartments. The area is also home to Santa Clara County Medical Center, the largest hospital in the region and San Jose City College which has an average enrollment of about 1,700 full time students. The neighborhood is very established with approximately 34,197 residents residing in a one-mile radius with an average household income of \$146,420 (source ESRI).



**FOR SALE**  
**860-870 S. BASCOM AVENUE**  
**SAN JOSE, CALIFORNIA**

**DOUG FERRARI**  
CA BRE 01032363  
408.879.4002  
dferrari@primecommercialinc.com

**DIXIE DIVINE**  
CA BRE 00926251 & 01481181  
408.879.4001  
ddivine@primecommercialinc.com

## SANTA CLARA COUNTY

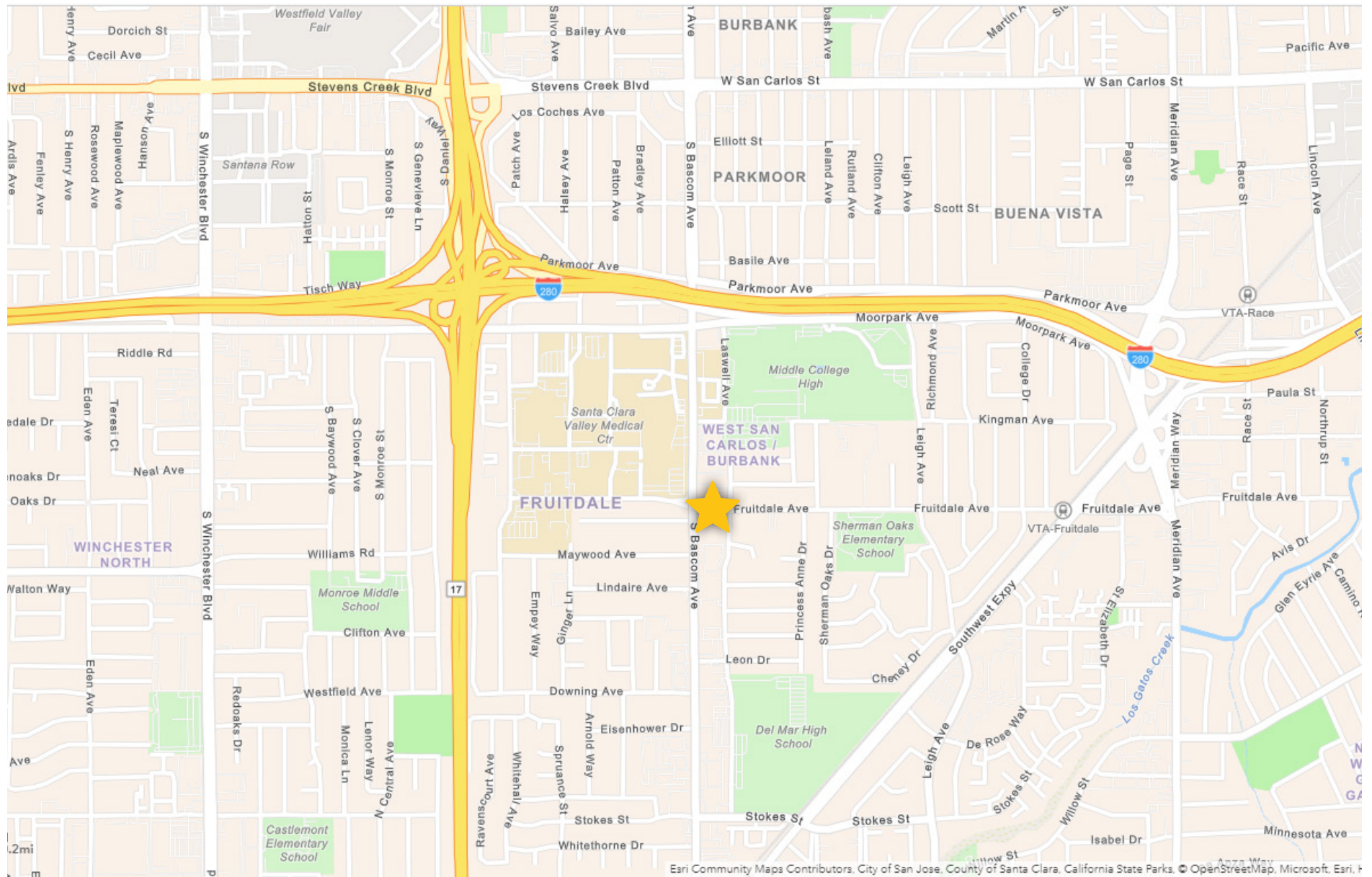
Santa Clara County is the most populous of the nine counties that make up the San Francisco Bay Region. The population of this metropolitan area is approximately 7,650,000 with approximately 1,781,642 residents residing in Santa Clara County. Over the past half century, Santa Clara County has been internationally referred to as “Silicon Valley” with a constant evolution of computers and high technologies being created in the region. The county has a highly affluent and educated workforce that provides the talent for these established and emerging high technology companies. Some of Santa Clara County’s largest employers include Apple Computer, Google, Advanced Micro Devices, Adobe, Netflix, and Hewlett Packard.

When compared to the twenty most populated counties in the United States, Santa Clara County ranks sixth in retail sales per capita, eighth in restaurant sales per capita, and first nationally in household income at over \$112,000. The area has some of the top institutions of higher learning which include Stanford University, Santa Clara University, and San Jose State. Santa Clara County has the third highest percentage of adults with bachelor’s or higher degrees compared to other counties nationally. In a recent study by ABAG, Santa Clara County is projected to have more than 1.4 million jobs by 2035 with its population swelling to 2.4 million residents.

## SAN JOSE DEMOGRAPHICS

Estimated Population 2020	1,021,795
Median Age	36.8
Total Households	323,940
Average People per Household	3.09
Average Household Income	\$150,864
Median Household Income	\$112,399

# AREA MAP



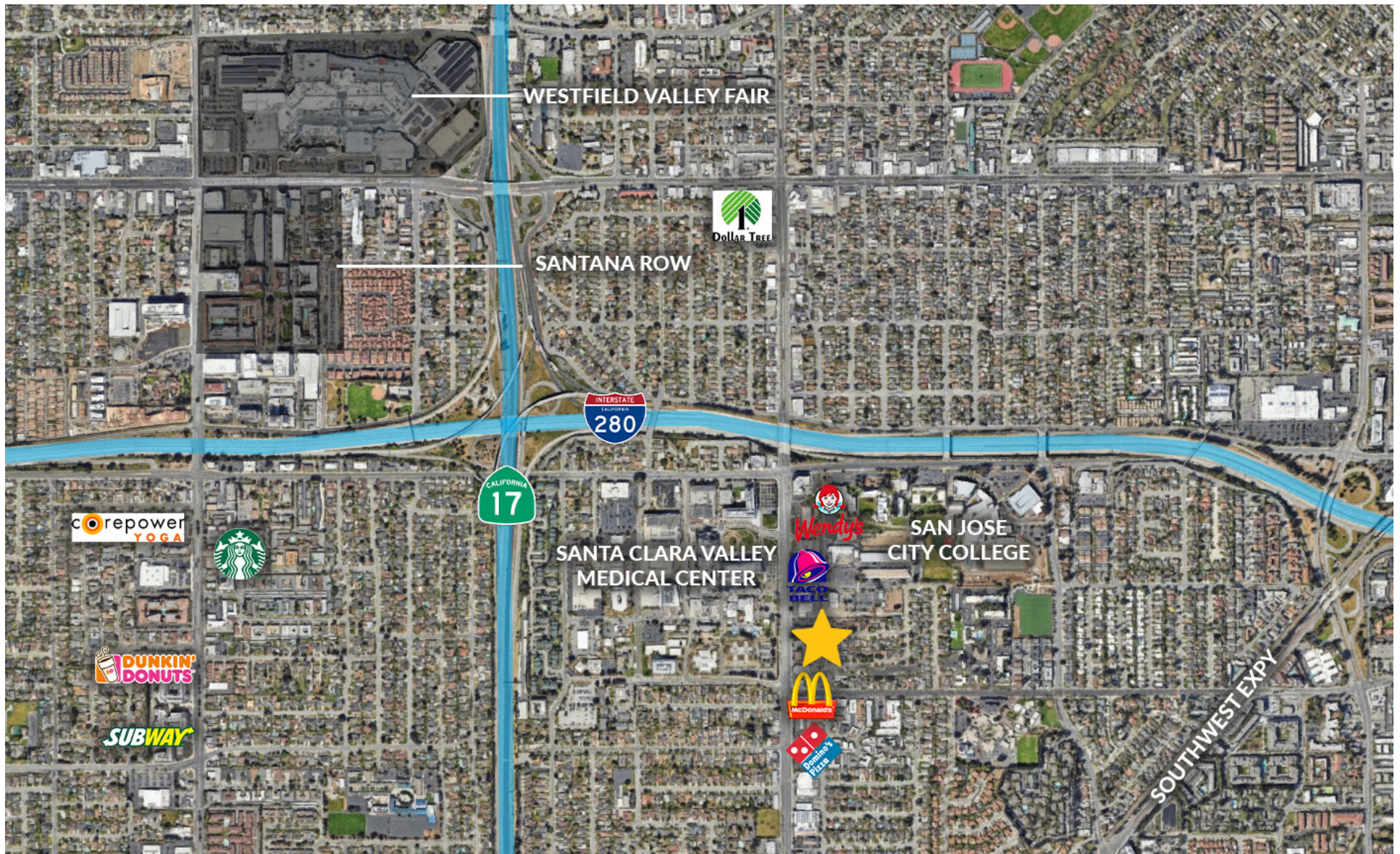
**FOR SALE**  
**860-870 S. BASCOM AVENUE**  
**SAN JOSE, CALIFORNIA**

**DOUG FERRARI**  
 CA BRE 01032363  
 408.879.4002  
 dferrari@primecommercialinc.com

**DIXIE DIVINE**  
 CA BRE 00926251 & 01481181  
 408.879.4001  
 ddivine@primecommercialinc.com

**PRIME COMMERCIAL**  
 INCORPORATED

# AERIAL MAP



**FOR SALE**  
 860-870 S. BASCOM AVENUE  
 SAN JOSE, CALIFORNIA

**DOUG FERRARI**  
 CA BRE 01032363  
 408.879.4002  
[dferrari@primecommercialinc.com](mailto:dferrari@primecommercialinc.com)

**DIXIE DIVINE**  
 CA BRE 00926251 & 01481181  
 408.879.4001  
[ddivine@primecommercialinc.com](mailto:ddivine@primecommercialinc.com)

**PRIME COMMERCIAL**  
 INCORPORATED

FOR SALE  
860-870 S. BASCOM AVENUE  
SAN JOSE, CALIFORNIA

**DIXIE DIVINE**  
CA BRE 00926251 & 01481181  
408.879.4001  
ddivine@primecommercialinc.com

DIXIE DIVINE  
CA BRE 00926251 & 01481181  
408.879.4001



# RENT ROLL

Address	Tenant	Rentable Square Feet	Pecent Occupied	Lease Commencement	Lease Expiration	Annual Rent	Rent/SF/Month	Rent Adjustment	Service	Options
860 S. Bascom Avenue	H & R Block	2,000	47.20%	3/1/2021	4/30/2023	\$38,203.44	\$1.59	N/A	NNN	One 1-year, \$3,200/mo.
870 S. Bascom Avenue	Subway	2,000	47.20%	8/1/2018	7/31/2023	\$43,432.44	\$1.81	2% Annual	Gross <sup>(1)</sup>	One 5-year
Billboard	Outfront			9/1/2021	8/31/2026	\$3,800.00			Gross	Year 6-10, \$4,100/mo.
Total		4,000	94.40%			\$85,435.88				

(1) 2% annual increase

## OPERATION EXPENSES

Taxes (1.2106%)	\$30,204.37
Direct Assessments	\$1,184.34
Insurance	\$3,300.00
HVAC Maintenance	\$1,200.00
Utilities (Water)	Tenant
Garbage	Tenant
Total	<u>\$35,888.81</u>

## REIMBURSEMENTS

Taxes	\$15,102.24
Direct Assessments	\$592.17
Insurance	\$1,650.00
HVAC Maintenance	<u>\$600.00</u>
Total	\$17,944.41

## FINANCIAL OVERVIEW

Scheduled Base Rent	\$85,435.88
Expense Reimbursements	\$17,944.41
Vacancy (0.00%)	\$0.00
Effective Gross Income	\$103,380.29
Less Operating Expenses	\$35,888.81
Net Operating Income	\$67,491.48

PRICE PER SQUARE FOOT \$589.00  
PRICE \$2,495,000.00 (2.71% CAP)

**FOR SALE**  
860-870 S. BASCOM AVENUE  
SAN JOSE, CALIFORNIA

**DOUG FERRARI**  
CA BRE 01032363  
408.879.4002  
dferrari@primecommercialinc.com

**DIXIE DIVINE**  
CA BRE 00926251 & 01481181  
408.879.4001  
ddivine@primecommercialinc.com

