

© 2022 Google

FOR LEASE PROFESSIONAL OFFICE BUILDING

851 Del Mar Avenue | San Jose, California



PC INC PRIME COMMERCIAL
INCORPORATED

1543 Lafayette Street, Suite C
Santa Clara, 95050
Office 408.879.4000
www.primecommercialinc.com

DOUG FERRARI
CA BRE 01032363
408.879.4002

dferrari@primecommercialinc.com

DIXIE DIVINE
CA BRE 00926251 & 01481181
408.879.4001

ddivine@primecommercialinc.com

Prime Commercial, Inc. has obtained the information contained herein from sources we deem reliable. However, we have not verified its accuracy and make no guarantee, warranty or representation about it. It is subject to errors, modification, omission, change of price and/or terms, prior lease sale or financing, or withdraw without notice. It may include projections, opinions, or assumptions or estimated for example only, and they may represent current or future performance of the property. You and your tax and legal advisors should conduct your own of the property and transaction. The information provided in this brochure are estimates only, not representations, and are not intended to be relied upon for any purpose. All demographic information contained in this brochure is obtained from STDB.

PROPERTY HIGHLIGHTS

- \$1.45 / SF + Net
- 4,500 Square Feet
- Convenient Location near Valley Medical Center / San Jose City College / U.S HWY 280
- Nice quality office improvements
- Well maintained building & parking lot
- On-site parking for 10 vehicles
- Good traffic counts and high demographics
- Secure parking lot with 12 spaces

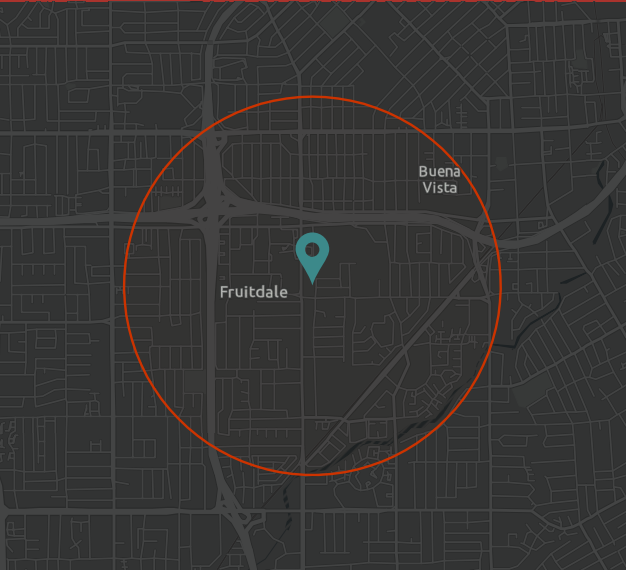
DEMOGRAPHIC SUMMARY


	1 Mile	3 Miles	5 Miles
Population	34,197	262,528	569,487
Annual Household Income	\$146,120	\$173,373	\$175,768
Traffic Counts			
Del Mar Avenue:	13,680 ADT		
Fruitdale Avenue:	16,080 ADT		

DEMOGRAPHIC PROFILE

851 Del Mar Ave, San Jose, California, 95128

Ring of 1 mile

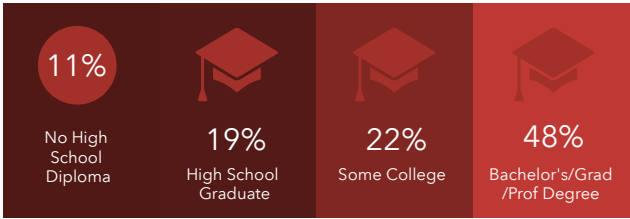




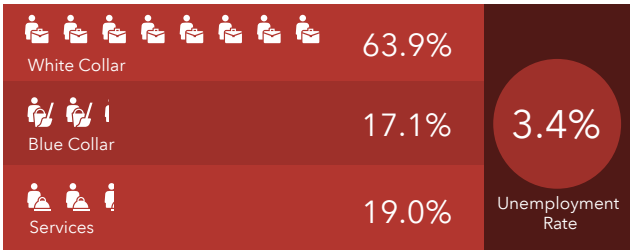
THE SCIENCE OF WHERE®

This infographic contains data provided by Esri. The vintage of the data is 2022, 2027. © 2023 Esri

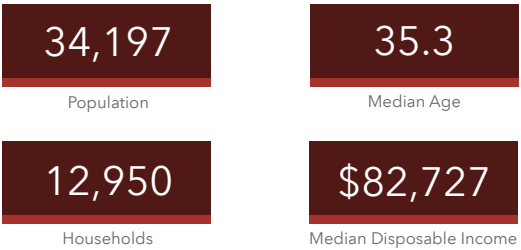
EDUCATION



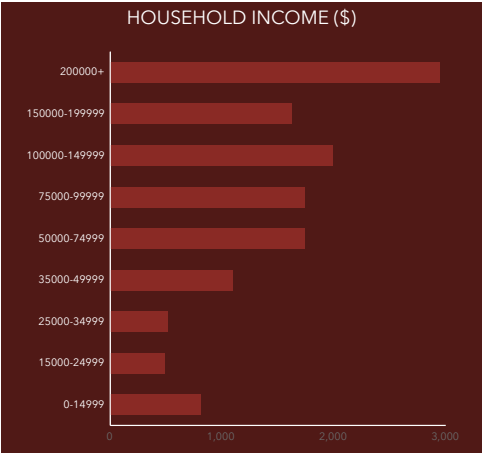
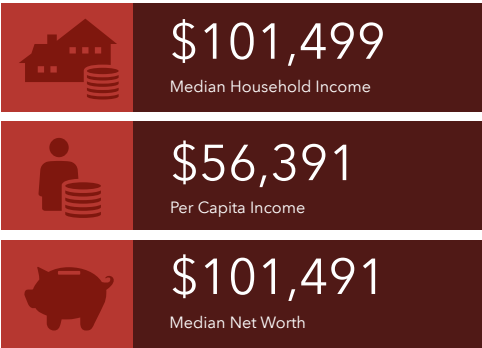
EMPLOYMENT



KEY FACTS



INCOME



PROPERTY PHOTOS



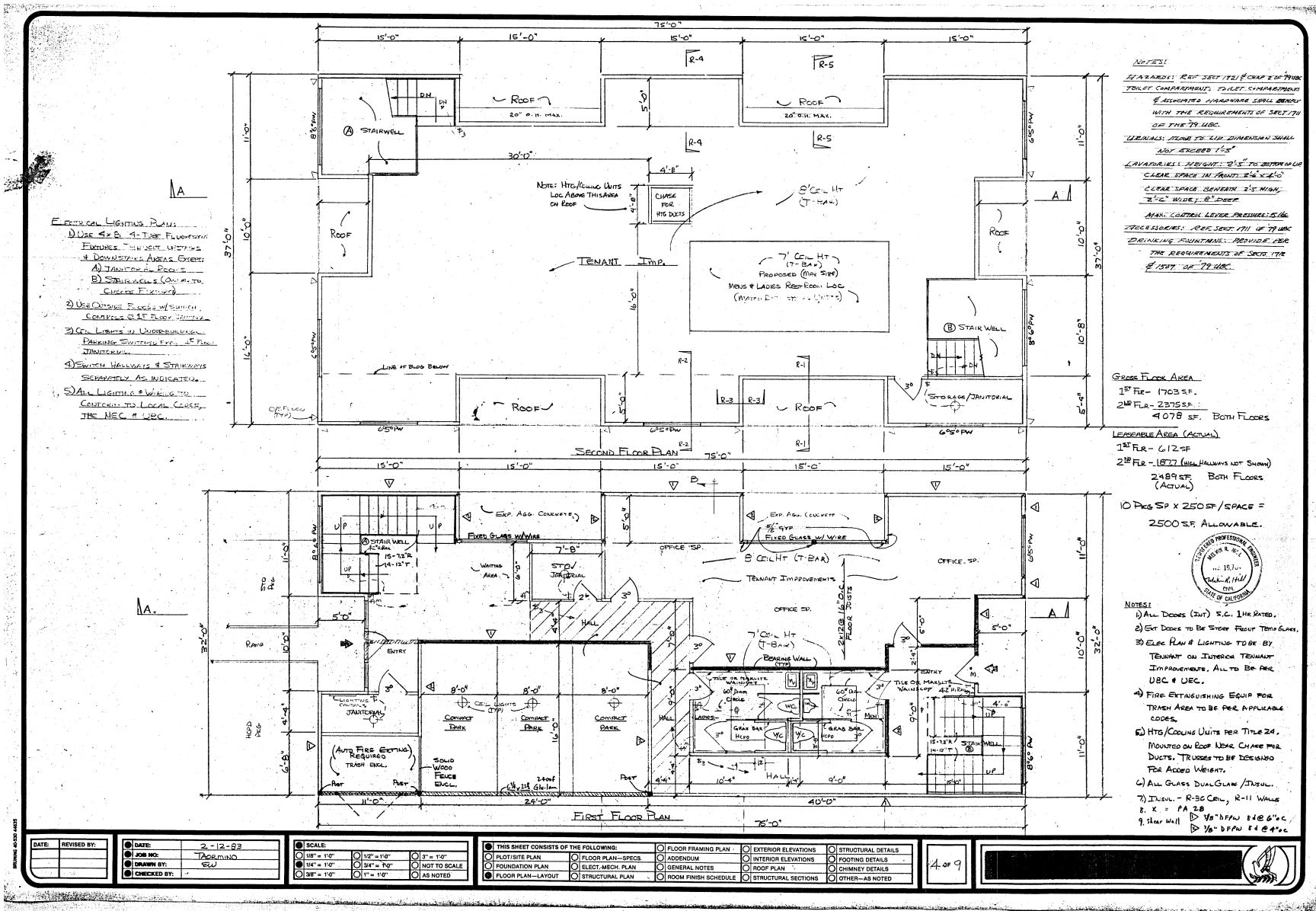
FOR LEASE
851 DEL MAR AVENUE
SAN JOSE, CALIFORNIA

DOUG FERRARI
CA BRE 01032363
408.879.4002
dferrari@primecommercialinc.com

DIXIE DIVINE
CA BRE 00926251 & 01481181
408.879.4001
ddivine@primecommercialinc.com

 **PRIME COMMERCIAL**
INCORPORATED

FIRST FLOOR PLAN



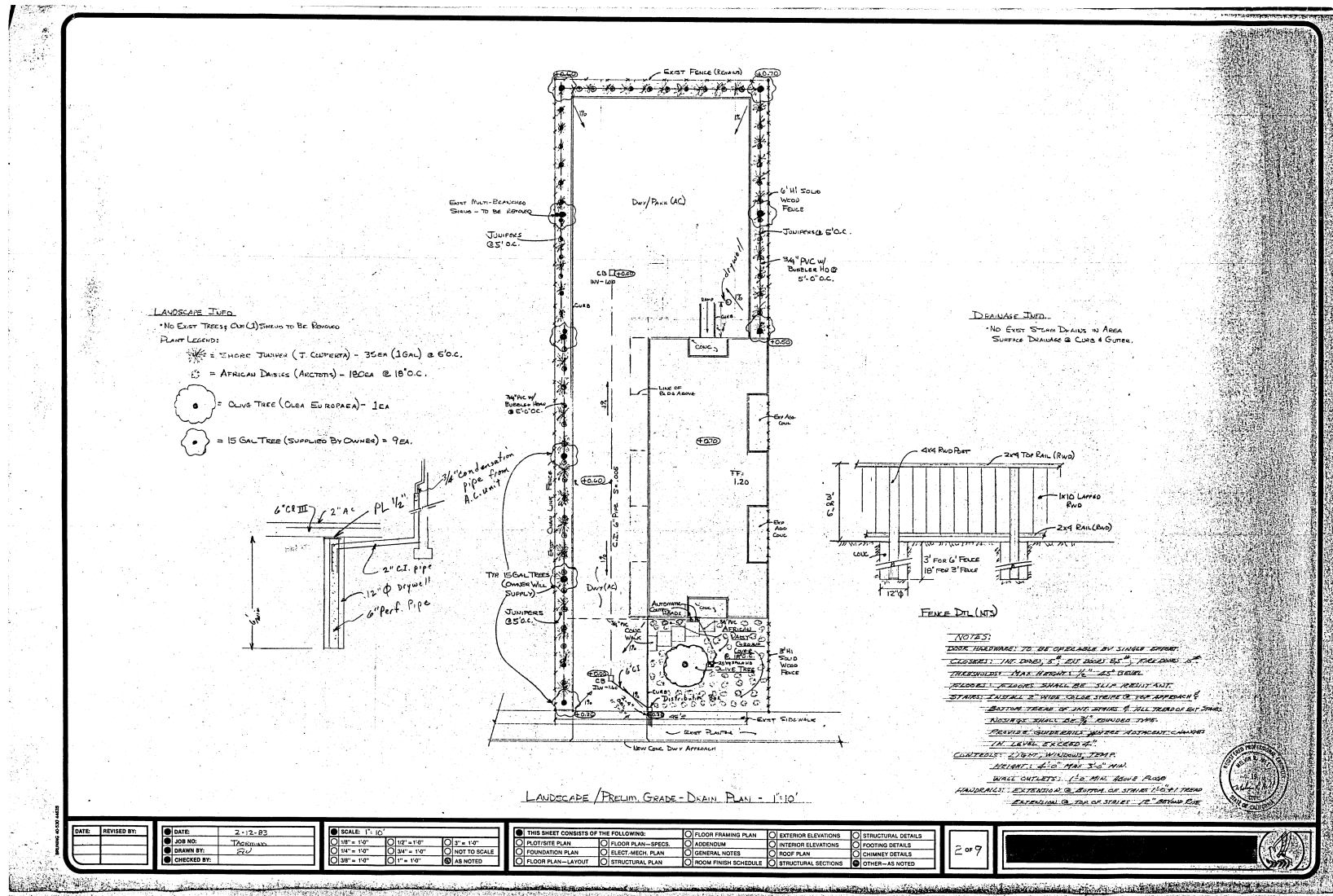
FOR LEASE
851 DEL MAR AVENUE
SAN JOSE, CALIFORNIA

DOUG FERRARI
CA BRE 01032363
408.879.4002
dferrari@primecommercialinc.com

DIXIE DIVINE
CA BRE 00926251 & 01481181
408.879.4001
ddivine@primecommercialinc.com



LANDSCAPE FLOOR PLAN



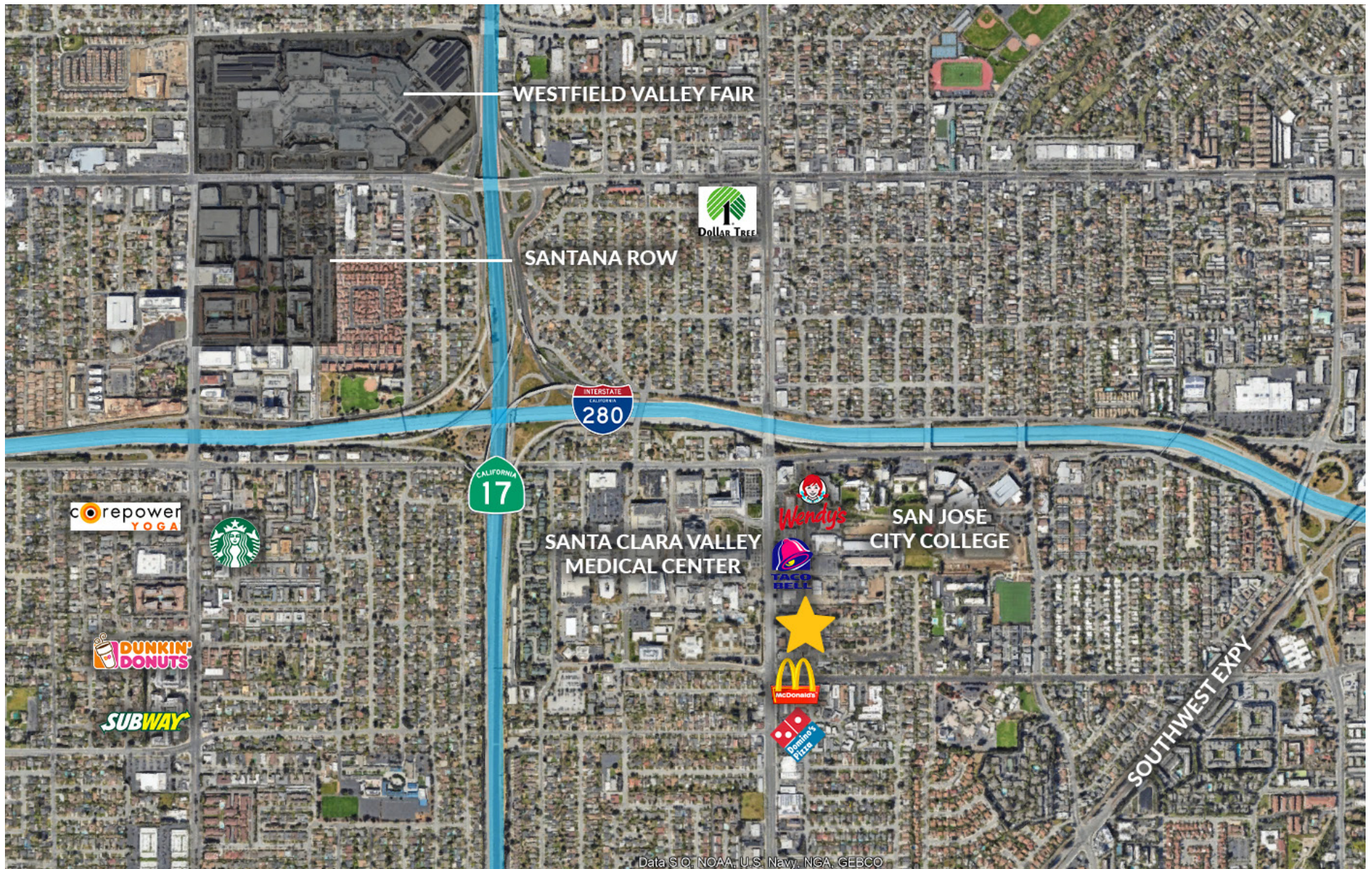
FOR LEASE
 851 DEL MAR AVENUE
 SAN JOSE, CALIFORNIA

DOUG FERRARI
 CA BRE 01032363
 408.879.4002
 dferrari@primecommercialinc.com

DIXIE DIVINE
 CA BRE 00926251 & 01481181
 408.879.4001
 ddivine@primecommercialinc.com

PRIME COMMERCIAL
 INCORPORATED

AERIAL MAP



FOR LEASE
851 DEL MAR AVENUE
SAN JOSE, CALIFORNIA

DOUG FERRARI
CA BRE 01032363
408.879.4002
dferrari@primecommercialinc.com

DIXIE DIVINE
CA BRE 00926251 & 01481181
408.879.4001
ddivine@primecommercialinc.com

For Leasing Inquiries, Please Contact:

Dixie Divine
(408) 879.4001

LIC #: 01481181
ddivine@primecommercialinc.com

Doug Ferrari
(408) 879.4002

LIC #: 01032363
dferrari@primecommercialinc.com

PC^{INC} PRIME COMMERCIAL
INCORPORATED