

PROFESSIONAL OFFICE BUILDING FOR SALE

851 Del Mar Avenue | San Jose, California



 **PRIME COMMERCIAL**
INCORPORATED

1543 Lafayette Street, Suite C
Santa Clara, 95050
Office 408.879.4000
www.primecommercialinc.com

DOUG FERRARI
CA BRE 01032363
408.879.4002

DIXIE DIVINE
CA BRE 00926251 & 01481181
408.879.4001

dferrari@primecommercialinc.com ddivine@primecommercialinc.com

Prime Commercial, Inc. has obtained the information contained herein from sources we deem reliable. However, we have not verified its accuracy and make no guarantee, warranty or representation about it. It is subject to errors, modification, omission, change of price and/or terms, prior lease sale or financing, or withdraw without notice. It may include projections, opinions, or assumptions or estimated for example only, and they may represent current or future performance of the property. You and your tax and legal advisors should conduct your own of the property and transaction. The information provided in this brochure are estimates only, not representations, and are not intended to be relied upon for any purpose. All demographic information contained in this brochure is obtained from STDB.

CONFIDENTIALITY & DISCLAIMER

Prime Commercial, Inc. has been retained on an exclusive right to sell basis to market 851 Del Mar Avenue, San Jose. The information herein distributed by Prime Commercial, Inc. is intended to be viewed only by the parties specifically targeted by Prime Commercial, Inc. The investment package should not be made available to any other parties unless first verified, in writing, by Prime Commercial, Inc. This Investment offering has been prepared to provide a summary, unverified information to prospective purchasers, and to establish only a preliminary level of interest in the subject property. The information contained herein is not a substitute for a thorough due diligence investigation. Prime Commercial, Inc. has not made any investigation, and makes no warranty or representation, with respect to the income or expenses for the subject property, the future projected financial improvements, the presence or absence of contaminating substances, PCB's or asbestos, the compliance with State and Federal regulations, the physical condition of the improvements thereon, or the financial condition or business prospects of any tenant, or any tenant's plans or intentions to continue its occupancy of the subject property. The information contained in this investment offering has been obtained from sources Prime Commercial, Inc., deems reliable; however, Prime Commercial, Inc. has not verified and will not verify any of the information contained herein, nor has Prime Commercial, Inc. conducted any investigation regarding these matters and makes no warranty or representation whatsoever regarding the accuracy or completeness of the information provided. All potential buyers must take the appropriate measures to verify all of the information set forth herein.

The Seller expressly reserves the right, at its sole discretion, to withdraw the Property from the market. Seller and Prime Commercial, Inc. reserves the right, expressed or implied, to reject any offer to purchase the property and to terminate discussions with any person or entity reviewing this offering memorandum until and unless the seller executes and delivers a signed purchase agreement with terms acceptable to the Seller.

FOR SALE
851 DEL MAR AVENUE
SAN JOSE, CALIFORNIA

DOUG FERRARI
CA BRE 01032363
408.879.4002
dferrari@primecommercialinc.com

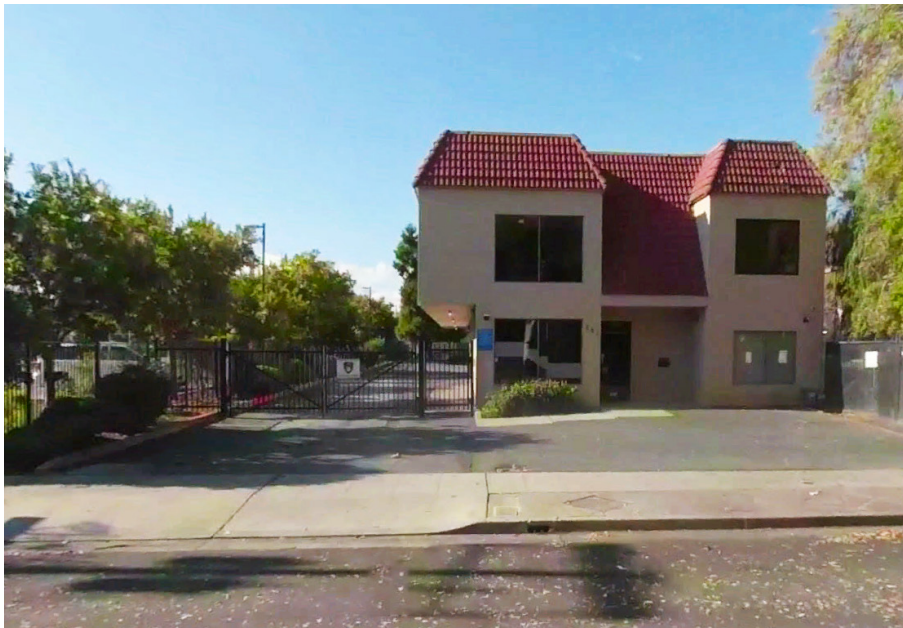
DIXIE DIVINE
CA BRE 00926251 & 01481181
408.879.4001
ddivine@primecommercialinc.com

TABLE OF CONTENTS

Investment Summary.....	3
Investment Offering & Highlights.....	3
Property Overview.....	4
Land & Trade Area.....	5
Santa Clara County.....	5
Area Map.....	6
Aerial Map.....	7
Plat Map	8

PROPERTY SUMMARY

Offering Price	\$1,895,000
Building Area	4,078 SF Gross
Land Area	225 Acres
Year Built	1985
On-Site Parking	12 Spaces
Ownership	Fee Simple
Tenancy	100% Vacant



PROPERTY OFFERING

Prime Commercial, Inc. Is pleased to offer 851 Del Mar Avenue for sale in San Jose, California. This two-story professional office building lies in west San Jose just south of U.S. Highway 280, one block east of Santa Clara County Valley Medical Center and two blocks south of San Jose City College. The building has been leased for many years, but has just become vacant. This property provides either an owner-user, or investor an ideal location surrounded by established institutional uses, a well maintained building and the added amenity of on-site parking.

PROPERTY HIGHLIGHTS

- Affordable single tenant building
- Convenient Location near Valley Medical Center / San Jose City College / U.S HWY 280
- Nice quality office improvements
- Well maintained building & parking lot
- On-Site parking for 12 vehicles

FOR SALE
851 DEL MAR AVENUE
SAN JOSE, CALIFORNIA

DOUG FERRARI
CA BRE 01032363
408.879.4002
dferrari@primecommercialinc.com

DIXIE DIVINE
CA BRE 00926251 & 01481181
408.879.4001
ddivine@primecommercialinc.com

PROPERTY OVERVIEW

LOCATION

851 Del Mar Avenue
San Jose, California 95128

SITE

The subject is located on the west side of Del Mar Avenue.
APN 282-42-030

LAND AREA

Rectangular parcel totalling 9,802 Square Feet.

BUILDING AREA

851 Del Mar Avenue is two story professional office building that was constructed in 1985. Construction features include concrete slab foundation, wood framed walls covered with stucco, and flat tar and gravel roof. Windows and storefront systems are anodized aluminum with tented glazing. Total square footage is approximately 4,078 square feet; however, the two car garage was converted to office space bringing the gross area of the building to about 4,500 square feet. The interior of the building is built out with private offices, conference rooms, kitchenette, and restrooms on the first floor. All improvements are of good quality and condition and served with roof mounted HVAC units.

PARKING

On-Site, private lot for twelve vehicles

TRAFFIC COUNTS

Fruitdale Ave.	16,080 ADT
Fruitdale Ave. @ Bascom Ave.	23,540 ADT

ZONING

Per the city of San Jose, the subject site is currently zoned as CP (Commercial Pedestrian) with General Plan Designation of Urban Village Commercial.



FOR SALE

851 DEL MAR AVENUE
SAN JOSE, CALIFORNIA

DOUG FERRARI

CA BRE 01032363
408.879.4002
dferrari@primecommercialinc.com

DIXIE DIVINE

CA BRE 00926251 & 01481181
408.879.4001
ddivine@primecommercialinc.com

LAND & TRADE AREA

851 Del Mar Avenue is located in West San Jose approximately 2.5 miles southwest of Downtown San Jose and approximately 3.0 miles south of Minetta International Airport. San Jose is the largest city in Northern California with an estimated population of 1,021,795 and is the third largest city in California behind Los Angeles and San Diego and the tenth largest city in the United States. San Jose is more commonly referred to as “the Capital of Silicon Valley” with its booming high-tech industries that make up the economic engine of the region. The immediate neighborhood is primarily developed with retail strip centers, office buildings, single family residences as well as low-rise garden style apartments. The area is also home to Santa Clara County Medical Center, the largest hospital in the region and San Jose City College which has an average enrollment of about 1,700 full time students. The neighborhood is very established with approximately 34,197 residents residing in a one-mile radius with an average household income of \$146,420 (source ESRI).



FOR SALE
851 DEL MAR AVENUE
SAN JOSE, CALIFORNIA

DOUG FERRARI
CA BRE 01032363
408.879.4002
dferrari@primecommercialinc.com

SANTA CLARA COUNTY

Santa Clara County is the most populous of the nine counties that make up the San Francisco Bay Region. The population of this metroplex is approximately 7,650,000 with approximately 1,781,642 residents residing in Santa Clara County. Over the past half century, Santa Clara County has been internationally referred to as “Silicon Valley” with a constant evolution of computers and high technologies being created in the region. The county has a highly affluent and educated workforce that provides the talent for these established and emerging high technology companies. Some of Santa Clara County’s largest employers include Apple Computer, Google, Advanced Micro Devices, Adobe, Netflix, and Hewlett Packard.

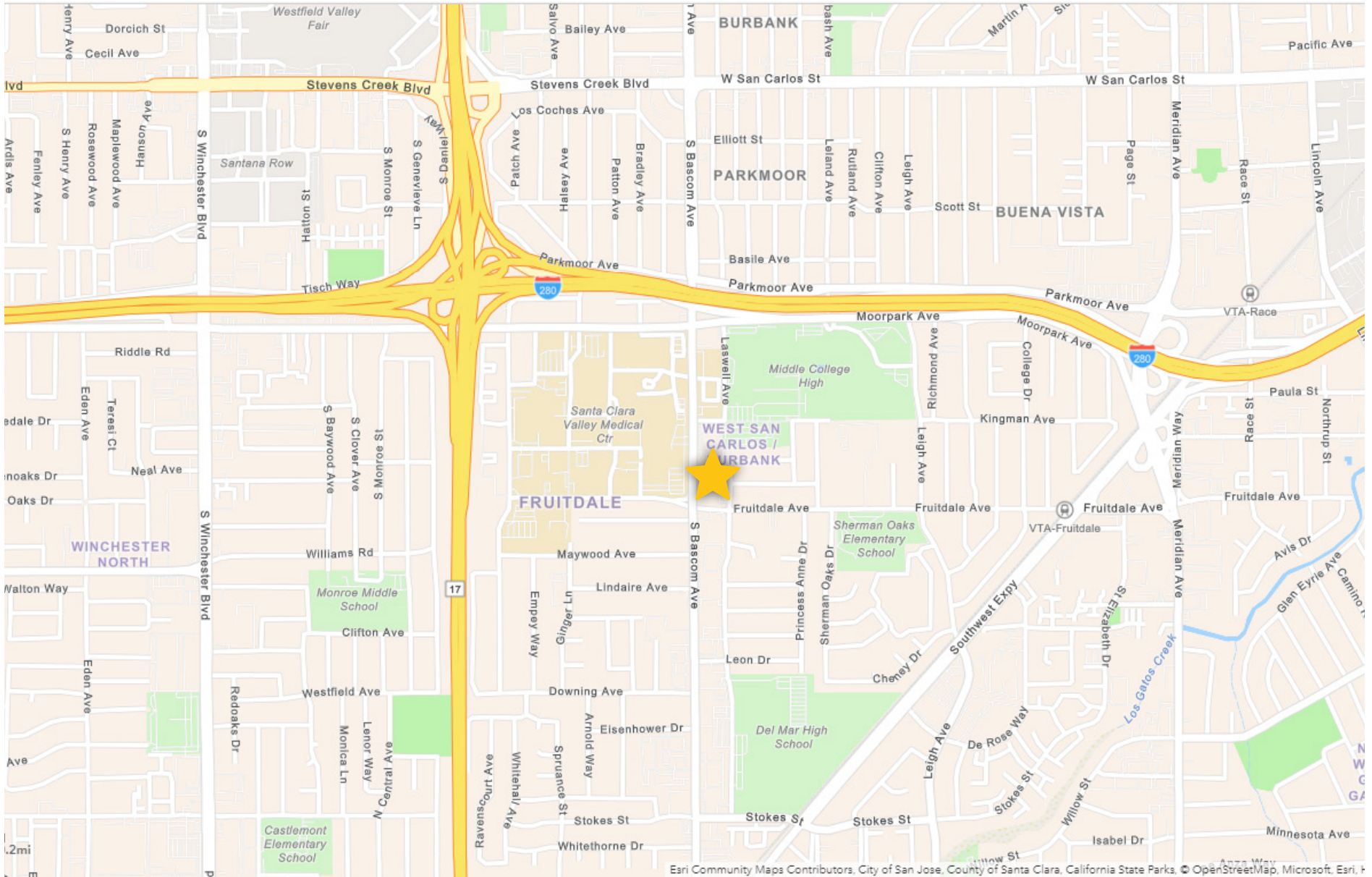
When compared to the twenty most populated counties in the United States, Santa Clara County ranks sixth in retail sales per capita, eighth in restaurant sales per capita, and first nationally in household income at over \$112,000. The area has some of the top institutions of higher learning which include Stanford University, Santa Clara University, and San Jose State. Santa Clara County has the third highest percentage of adults with bachelor’s or higher degrees compared to other counties nationally. In a recent study by ABAG, Santa Clara County is projected to have more than 1.4 million jobs by 2035 with its population swelling to 2.4 million residents.

SAN JOSE DEMOGRAPHICS

Estimated Population 2020	1,021,795
Median Age	36.8
Total Households	323,940
Average People per Household	3.09
Average Household Income	\$150,864
Median Household Income	\$112,399

DIXIE DIVINE
CA BRE 00926251 & 01481181
408.879.4001
ddivine@primecommercialinc.com

AREA MAP



Esri Community Maps Contributors, City of San Jose, County of Santa Clara, California State Parks, © OpenStreetMap, Microsoft, Esri, Inc.

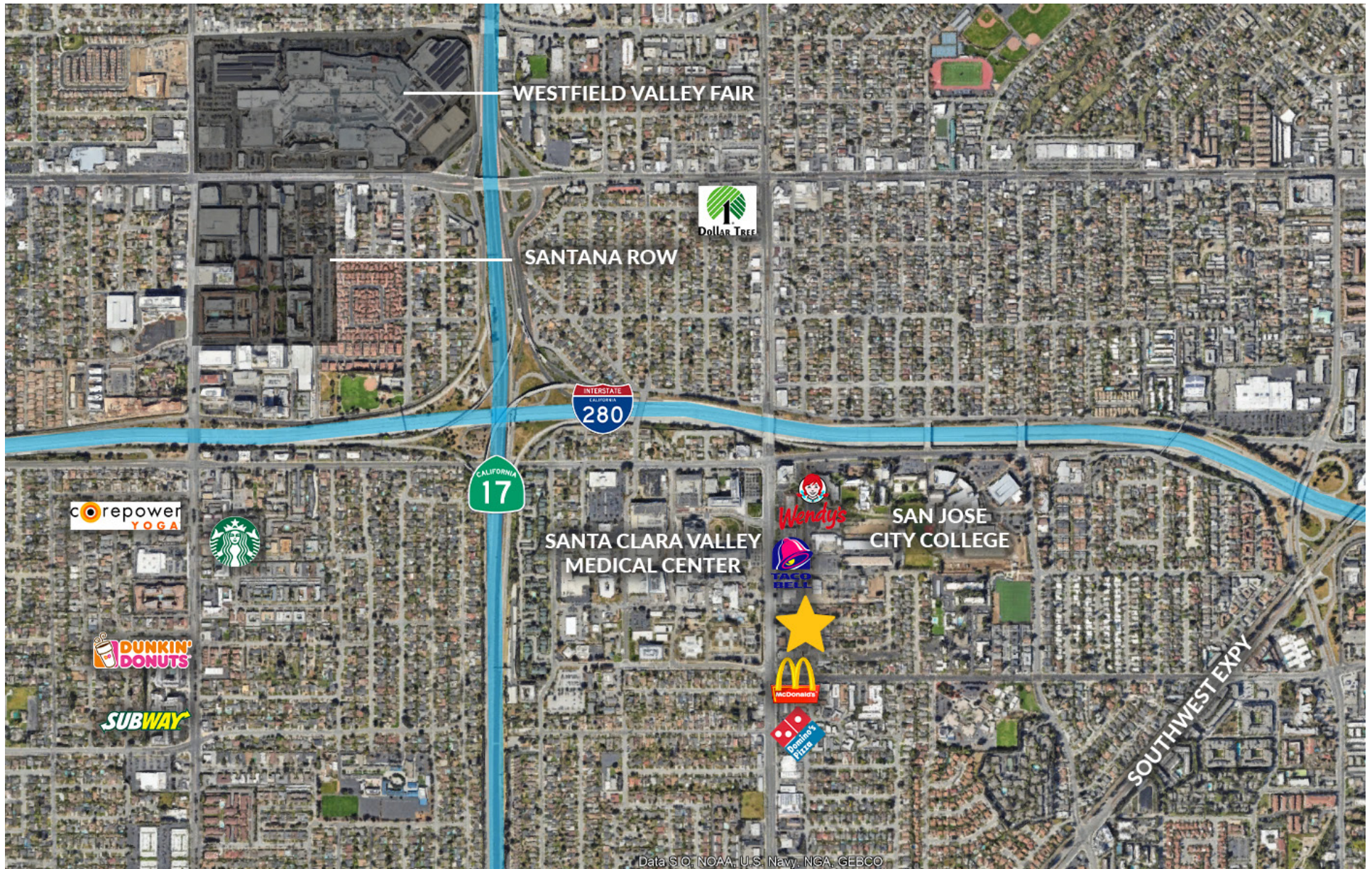
FOR SALE
 851 DEL MAR AVENUE
 SAN JOSE, CALIFORNIA

DOUG FERRARI
 CA BRE 01032363
 408.879.4002
 dferrari@primecommercialinc.com

DIXIE DIVINE
 CA BRE 00926251 & 01481181
 408.879.4001
 ddivine@primecommercialinc.com



AERIAL MAP

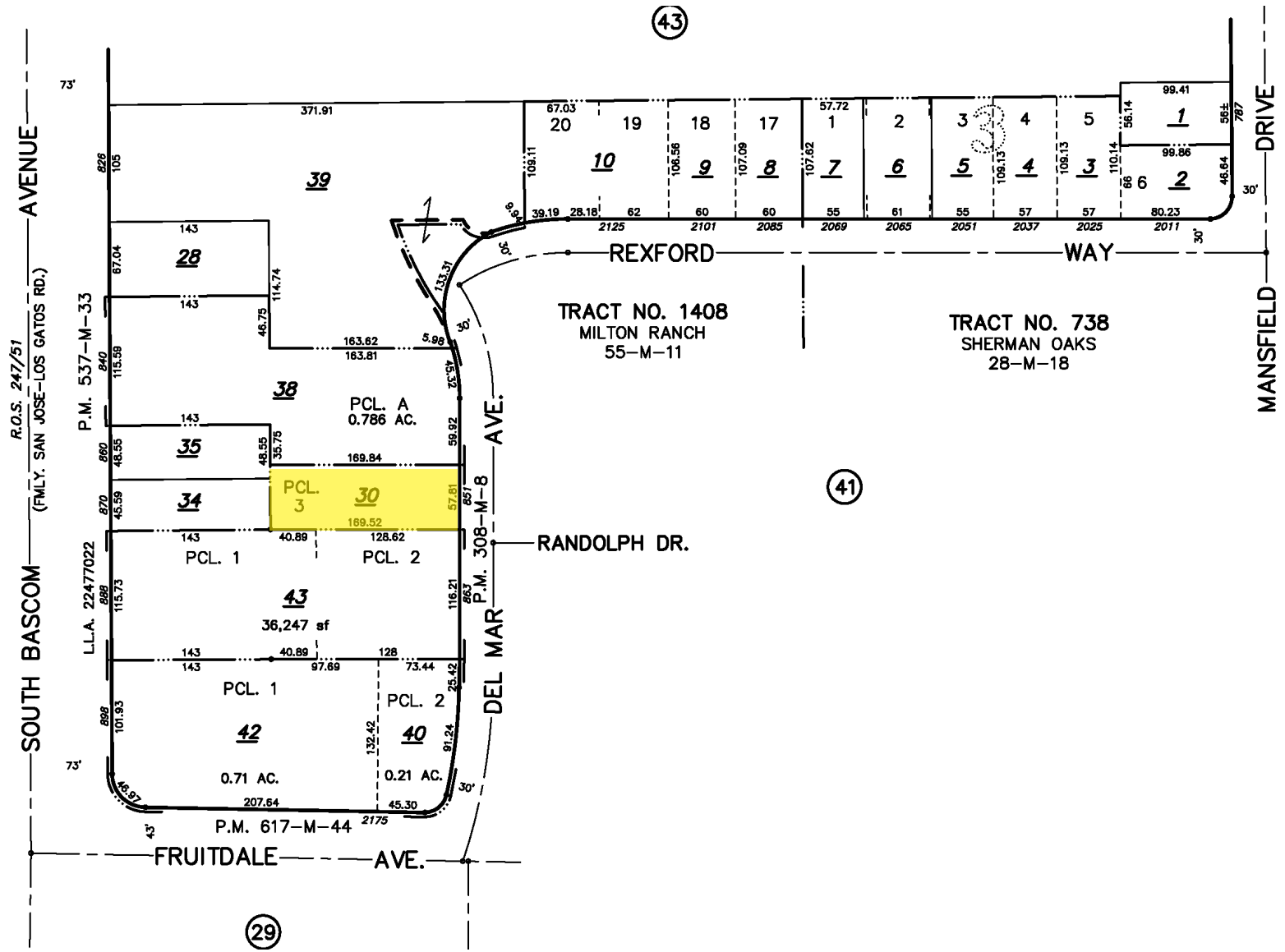


FOR SALE
851 DEL MAR AVENUE
SAN JOSE, CALIFORNIA

DOUG FERRARI
CA BRE 01032363
408.879.4002
dferrari@primecommercialinc.com

DIXIE DIVINE
CA BRE 00926251 & 01481181
408.879.4001
ddivine@primecommercialinc.com

PLAT MAP



FOR SALE
 851 DEL MAR AVENUE
 SAN JOSE, CALIFORNIA

DOUG FERRARI
 CA BRE 01032363
 408.879.4002
 dferrari@primecommercialinc.com

DIXIE DIVINE
 CA BRE 00926251 & 01481181
 408.879.4001
 ddivine@primecommercialinc.com

