



# East Cliff

## VILLAGE

**21151 - 21521 East Cliff Drive**  
SANTA CRUZ, CA 95062

**AVAILABLE FOR LEASE:**

**MEDICAL/CHILDCARE CENTER**  
*W/ OUTDOOR LOT AREA*

**RETAIL SPACES**





## ADDRESS

21507 - 21521 East Cliff Drive  
Santa Cruz, CA 96052



## PROPERTY HIGHLIGHTS

Approx. 46,000 sq. foot neighborhood shopping center  
Ample parking lot

Located within desirable East Cliff neighborhood  
Excellent demographics in affluent area  
Approx. 10,839 daytime pop

Medical/Childcare & Retail Opportunities Available  
Spaces available from  $\pm 1,000$  SF - 9,442 SF

Located highly trafficked East Cliff Drive  
with  $\pm 15,481$  ADT

Notable tenants include:  
Dollar Tree (Anchor)  
Balefire Brewing Company & Beer Garden  
Live Oak Farmer's Market (Sundays)

Currently undergoing exterior renovations

## Availability

### JR. ANCHOR PAD

**SIZE:** 9,442 SF PAD Building  
w/ 10,000 ± SF Outdoor Area

**PRICE:** \$1.60 / SF + NNN \$0.55

### IN- LINE RETAIL

**SIZE:** 1,556 SF

**PRICE:** \$2.00 - 2.50 / SF + NNN \$0.55





## Jr. Anchor Pad Building

### ADDRESS

21507 East Cliff Drive

### SIZE

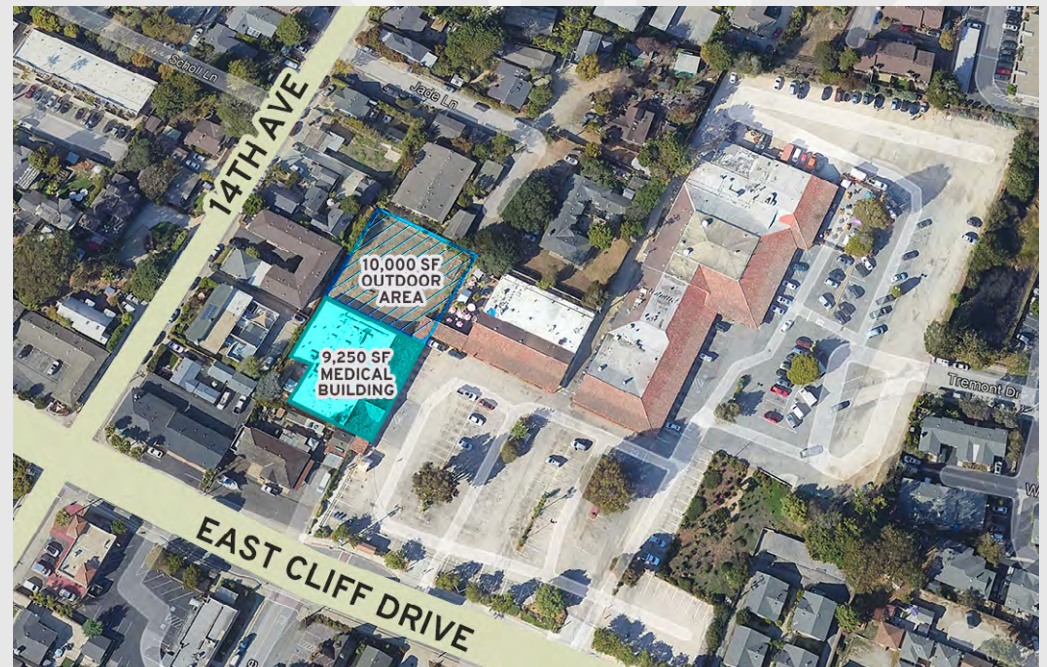
9,442 SF - PAD Building  
Attached 10,000± SF Outdoor Area

### PRICING

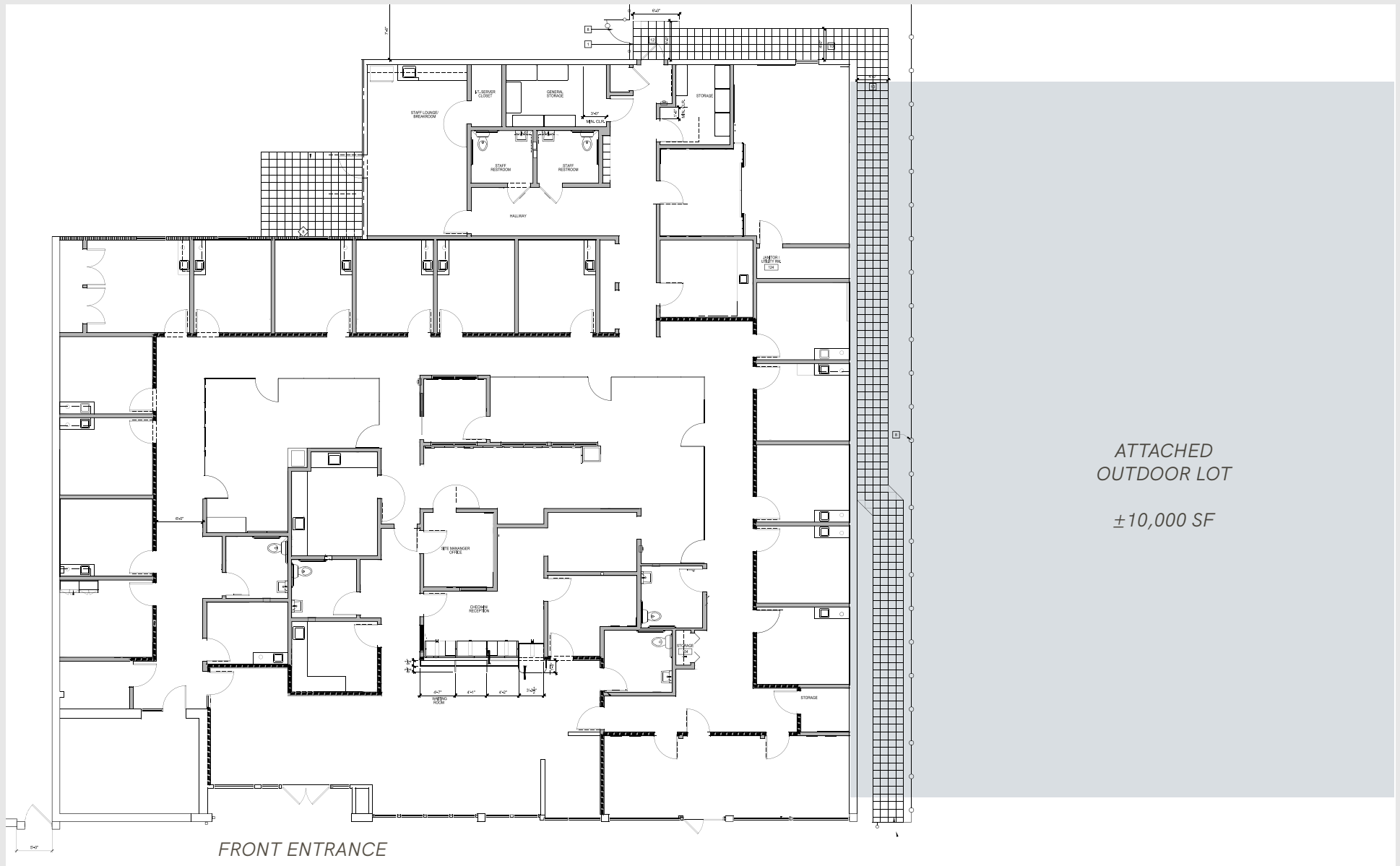
\$1.60 / SF + NNN 0.55

### PROPERTY HIGHLIGHTS

- Existing Medical Build-Out
- Multiple private treatment rooms
- Lobby & Receptionist Area
- Attached Outdoor Area  
*Perfect for potential playground or garden use*
- Currently undergoing exterior remodeling

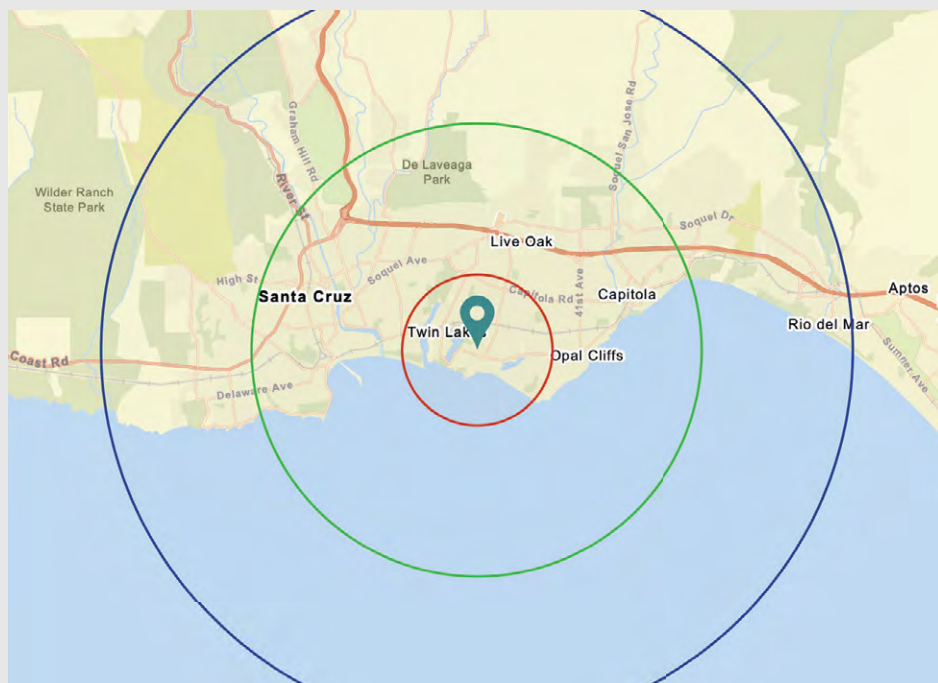


# JR. ANCHOR PAD BUILDING - FLOOR PLAN

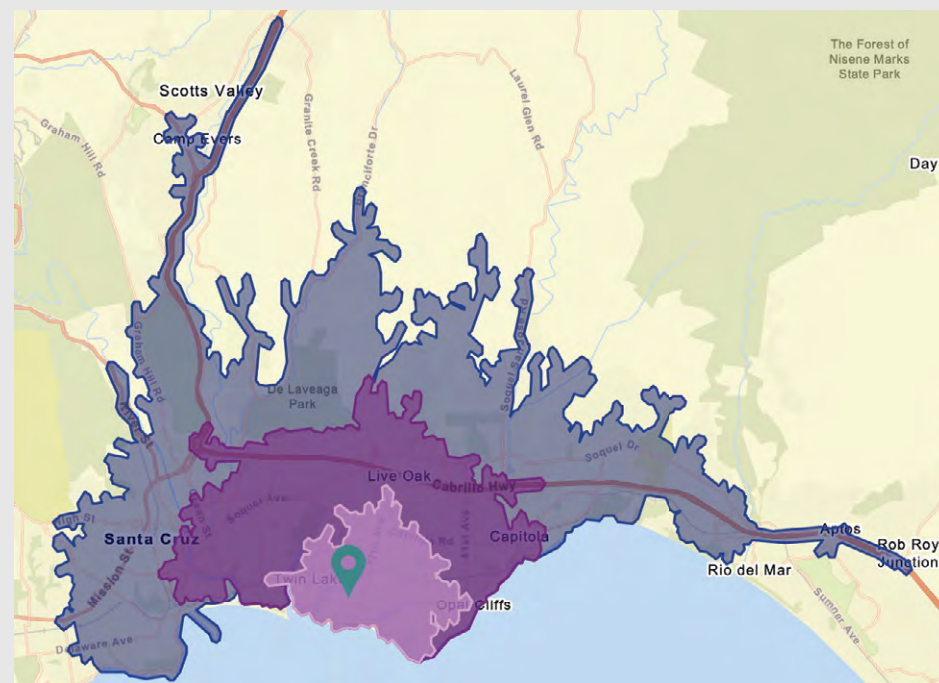




Distance: 1 Mile - 3 Miles - 5 Miles



Drive Time: 5 Minutes - 10 Minutes - 15 Minutes



### TRAFFIC COUNTS

\*Cars per day

East Cliff Drive	15,784
17th Ave	7,800



### AVERAGE HHI\*

1 Mile	\$140,671
3 Miles	\$141,874
5 Miles	\$150,294



### POPULATION

1 Mile	14,111
3 Miles	83,933
5 Miles	123,680



### DAYTIME POPULATION

1 Mile	10,839
3 Miles	90,592
5 Miles	131,436









## FOR LEASING INQUIRIES, PLEASE CONTACT:

**Brennan J. Monro**

CaDRE Lic: 02180211

BMonro@primecommercialinc.com

(408) 560-6100

**Dixie Divine**

CaDRE: 0092651 & 01481181

DDivine@primecommercialinc.com

(408) 313-8900

**PC** INC **PRIME COMMERCIAL**  
INCORPORATED

1543 Lafayette St, Suite C • Santa Clara, CA 95050

[www.primecommercialinc.com](http://www.primecommercialinc.com)

(408) 879-4000

*East Cliff*  
VILLAGE

Prime Commercial, Incorporated © 2024 Prime Commercial, Inc. has obtained the information contained herein from sources we deem reliable. However, we have not verified its accuracy and make no guarantee, warranty or representation about it. It is subject to errors, modification, omission, change of price and/or terms, prior lease sale or financing, or withdraw without notice. It may include projections, opinions, or assumptions or estimated for example only, and they may represent current or future performance of the property. You and your tax and legal advisors should conduct your own of the property and transaction. The information provided in this brochure are estimates only, not representations, and are not intended to be relied upon for any purpose. All demographic information contained in this brochure is obtained from esri via STDB.