

FOR SALE

14288 Capri Drive / Winchester Boulevard

Los Gatos, California



PRIME COMMERCIAL
INCORPORATED

1543 Lafayette Street, Suite C
Santa Clara, 95050
Office 408.879.4000
www.primecommercialinc.com

DIXIE DIVINE
CA BRE 00926251 & 01481181
408.879.4001
ddivine@primecommercialinc.com

DOUG FERRARI
CA BRE 01032363
408.879.4002
dferrari@primecommercialinc.com

JEFF WYATT — WYATT & ASSOCIATES
CO-LIST
CA BRE 00775425
408.832.6598

Prime Commercial, Inc. has obtained the information contained herein from sources we deem reliable. However, we have not verified its accuracy and make no guarantee, warranty or representation about it. It is subject to errors, modification, omission, change of price and/or terms, prior lease sale or financing, or withdraw without notice. It may include projections, opinions, or assumptions or estimated for example only, and they may represent current or future performance of the property. You and your tax and legal advisors should conduct your own due diligence of the property and transaction. The information provided in this brochure are estimates only, not representations, and are not intended to be relied upon for any purpose. All demographic information contained in this brochure is obtained from esri.



PROPERTY INFORMATION

- NE Corner of Winchester Boulevard at Hwy 85
- Located across from Netflix & Roku Headquarters
- Access: Curb cuts on Winchester Boulevard
- APN #: 406-30-016
- Size: 0.53 Acres
- Zoning: C-1 Neighborhood
- Price: \$2,300,000.00
- Preliminary Plans for a 10,000 SF Medical Building

CURRENT IMPROVEMENTS

- +/- 1,550 SF Residential House
- 3 Bedroom / 2 Bath

TRAFFIC COUNTS

- Winchester Boulevard: 18,000 ADT
- Capri Drive: 912 ADT



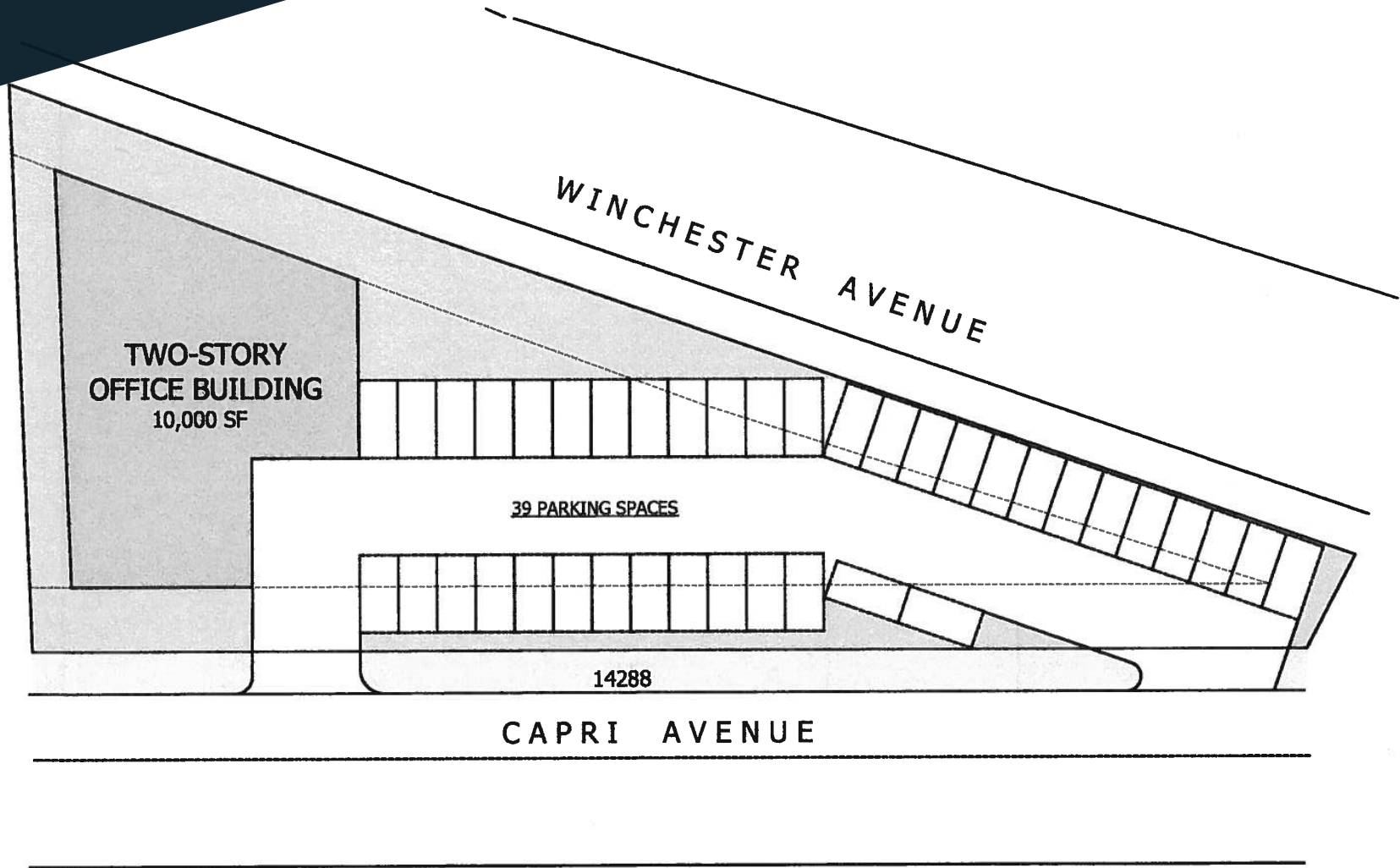
1543 Lafayette Street, Suite C
Santa Clara, 95050
Office 408.879.4000
www.primecommercialinc.com

DIXIE DIVINE
CA BRE 00926251 & 01481181
408.879.4001
ddivine@primecommercialinc.com

DOUG FERRARI
CA BRE 01032363
408.879.4002
dferrari@primecommercialinc.com

JEFF WYATT — WYATT & ASSOCIATES
CO-LIST
CA BRE 00775425
408.832.6598

PROPOSED TWO-STORY OFFICE BUILDING



1543 Lafayette Street, Suite C
Santa Clara, 95050
Office 408.879.4000
www.primecommercialinc.com

DIXIE DIVINE
CA BRE 00926251 & 01481181
408.879.4001
ddivine@primecommercialinc.com

DOUG FERRARI
CA BRE 01032363
408.879.4002
dferrari@primecommercialinc.com

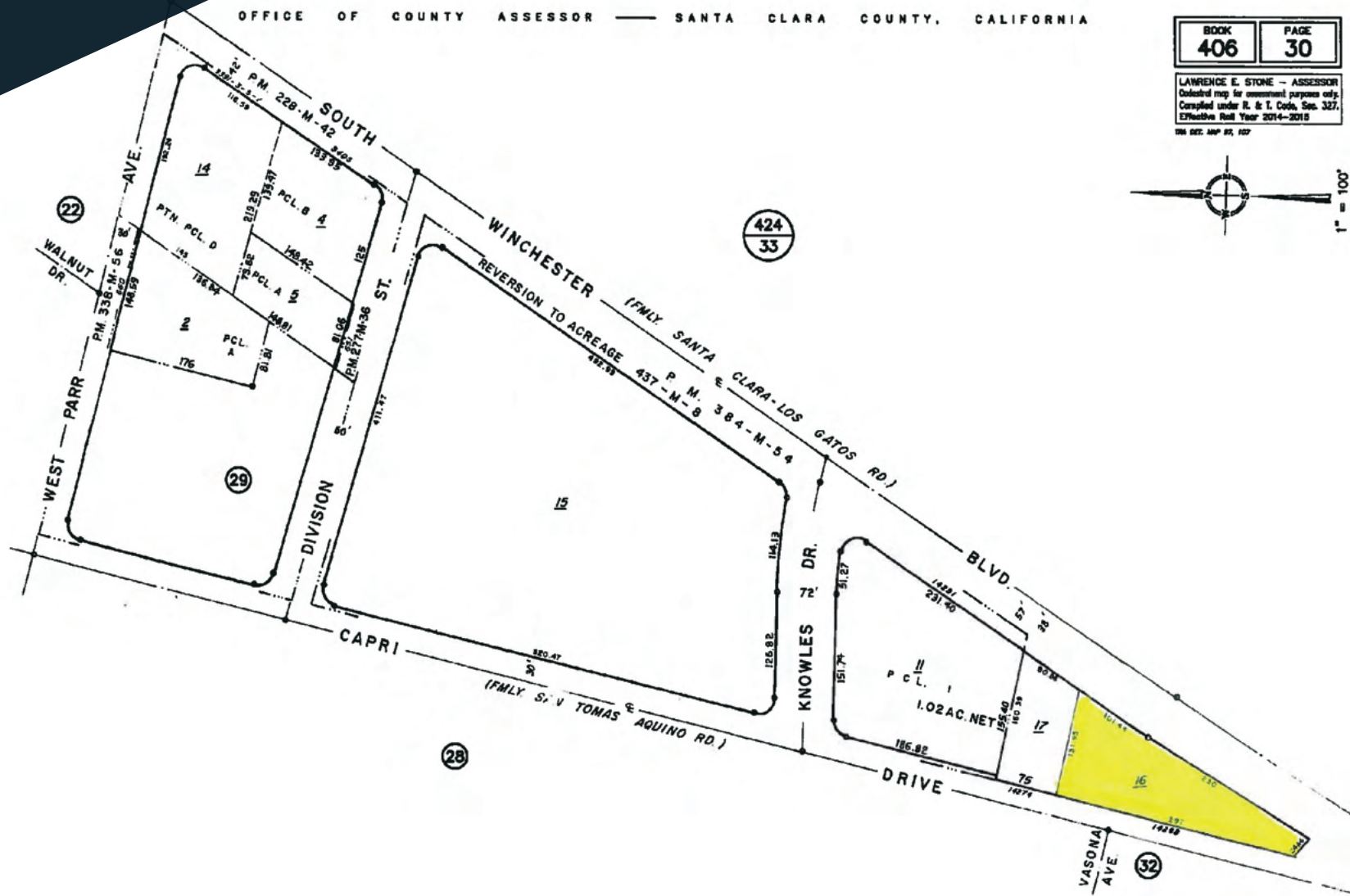
JEFF WYATT — WYATT & ASSOCIATES
CO-LIST
CA BRE 00775425
408.832.6598

PLAT MAP

OFFICE OF COUNTY ASSESSOR — SANTA CLARA COUNTY, CALIFORNIA

BOOK 406	PAGE 30
--------------------	-------------------

LAWRENCE E. STONE — ASSESSOR
 Detailed map for assessment purposes only.
 Compiled under R. & T. Code, Sec. 327,
 Effective Roll Year 2014-2018
 THE DET. MAP #1, 107



PRIME COMMERCIAL
INCORPORATED

1543 Lafayette Street, Suite C
 Santa Clara, 95050
 Office 408.879.4000
 www.primecommercialinc.com

DIXIE DIVINE
 CA BRE 00926251 & 01481181
 408.879.4001
 ddivine@primecommercialinc.com

DOUG FERRARI
 CA BRE 01032363
 408.879.4002
 dferrari@primecommercialinc.com

JEFF WYATT — WYATT & ASSOCIATES
 CO-LIST
 CA BRE 00775425
 408.832.6598

Prime Commercial, Inc. has obtained the information contained herein from sources we deem reliable. However, we have not verified its accuracy and make no guarantee, warranty or representation about it. It is subject to errors, modification, omission, change of price and/or terms, prior lease sale or financing, or withdraw without notice. It may include projections, opinions, or assumptions or estimated for example only, and they may represent current or future performance of the property. You and your tax and legal advisors should conduct your own due diligence of the property and transaction. The information provided in this brochure are estimates only, not representations, and are not intended to be relied upon for any purpose. All demographic information contained in this brochure is obtained from esri.

AERIAL MAP



PC INC PRIME COMMERCIAL
INCORPORATED

1543 Lafayette Street, Suite C
Santa Clara, 95050
Office 408.879.4000
www.primecommercialinc.com

DIXIE DIVINE
CA BRE 00926251 & 01481181
408.879.4001
ddivine@primecommercialinc.com

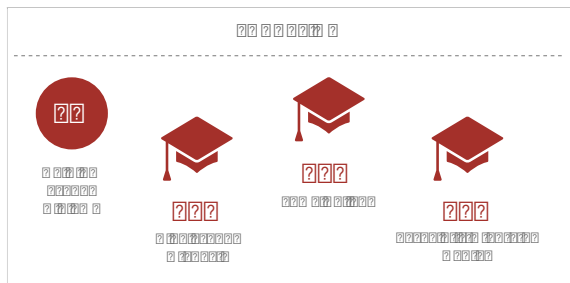
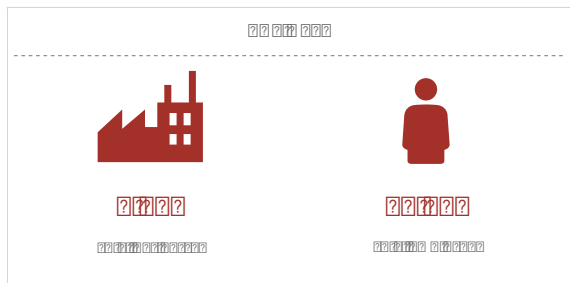
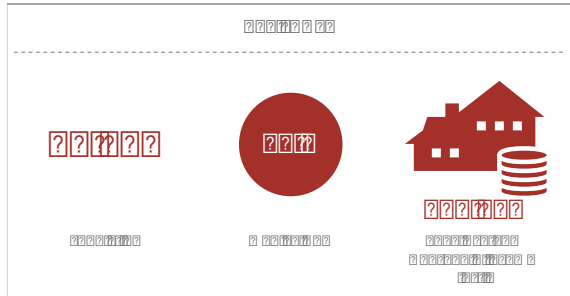
DOUG FERRARI
CA BRE 01032363
408.879.4002
dferrari@primecommercialinc.com

JEFF WYATT — WYATT & ASSOCIATES
CO-LIST
CA BRE 00775425
408.832.6598

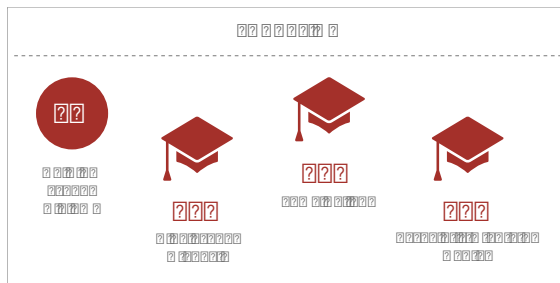
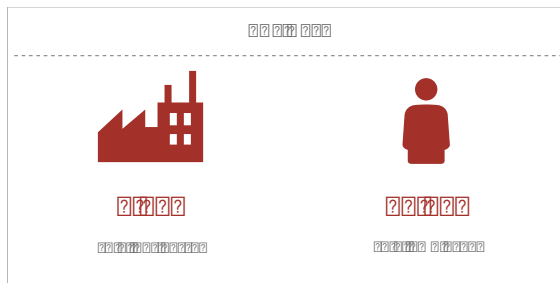
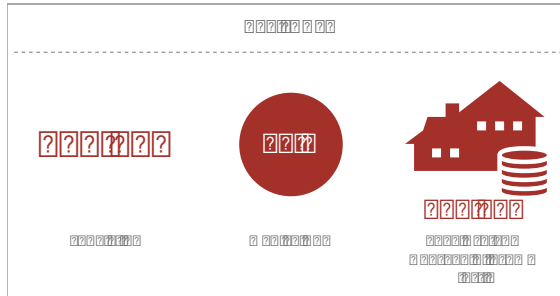
Prime Commercial, Inc. has obtained the information contained herein from sources we deem reliable. However, we have not verified its accuracy and make no guarantee, warranty or representation about it. It is subject to errors, modification, omission, change of price and/or terms, prior lease sale or financing, or withdraw without notice. It may include projections, opinions, or assumptions or estimated for example only, and they may represent current or future performance of the property. You and your tax and legal advisors should conduct your own due diligence of the property and transaction. The information provided in this brochure are estimates only, not representations, and are not intended to be relied upon for any purpose. All demographic information contained in this brochure is obtained from esri.

DEMOGRAPHICS

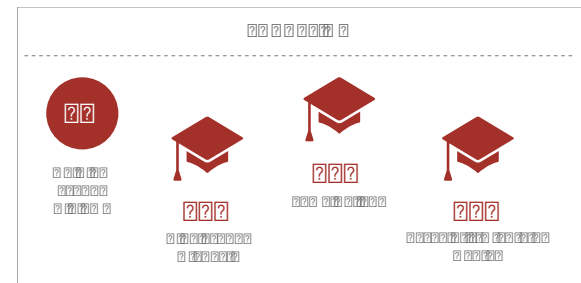
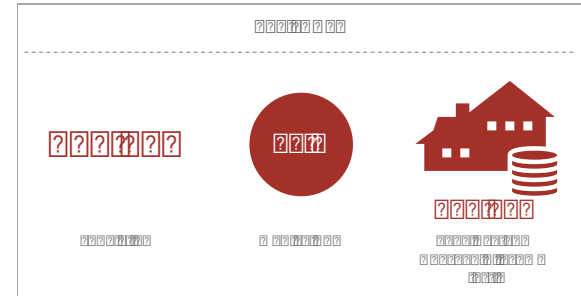
1 Mile



3 Miles



5 Miles



For more information, please contact

Dixie Divine

ddivine@primecommercialinc.com
408-313-8900
LIC# 00926251

Doug Ferrari

dferrari@primecommercialinc.com
408-718-0184
LIC# 01032363

Jeff Wyatt

Wyatt & Associates
Co-List
408-832-6598
LIC# 00775425



PRIME COMMERCIAL
INCORPORATED