

Los Gatos Shopping Center

NWC of North Santa Cruz Ave. & Highway 9
LOS GATOS, CA



PRIME COMMERCIAL
INCORPORATED

1543 Lafayette Street, Suite C
Santa Clara, CA 95050
408.879.4000
primecommercialinc.com

Dixie Divine
408.879.4001
ddivine@primecommercialinc.com
CA LICENSE NO. 01481181 & 00926251

Doug Ferrari
408.879.4002
dferrari@primecommercialinc.com
CA LICENSE NO. 01032363

The Los Gatos Shopping Center is conveniently positioned at the Gateway to the Downtown Shopping District located at the NWC of North Santa Cruz Avenue and Highway 9 in Los Gatos, California. This recently renovated Specialty Shopping Center was built with the finest materials and craftsmanship and offers an ideal opportunity for a variety of retailers to be located in the heart of prestigious Los Gatos.

FEATURES

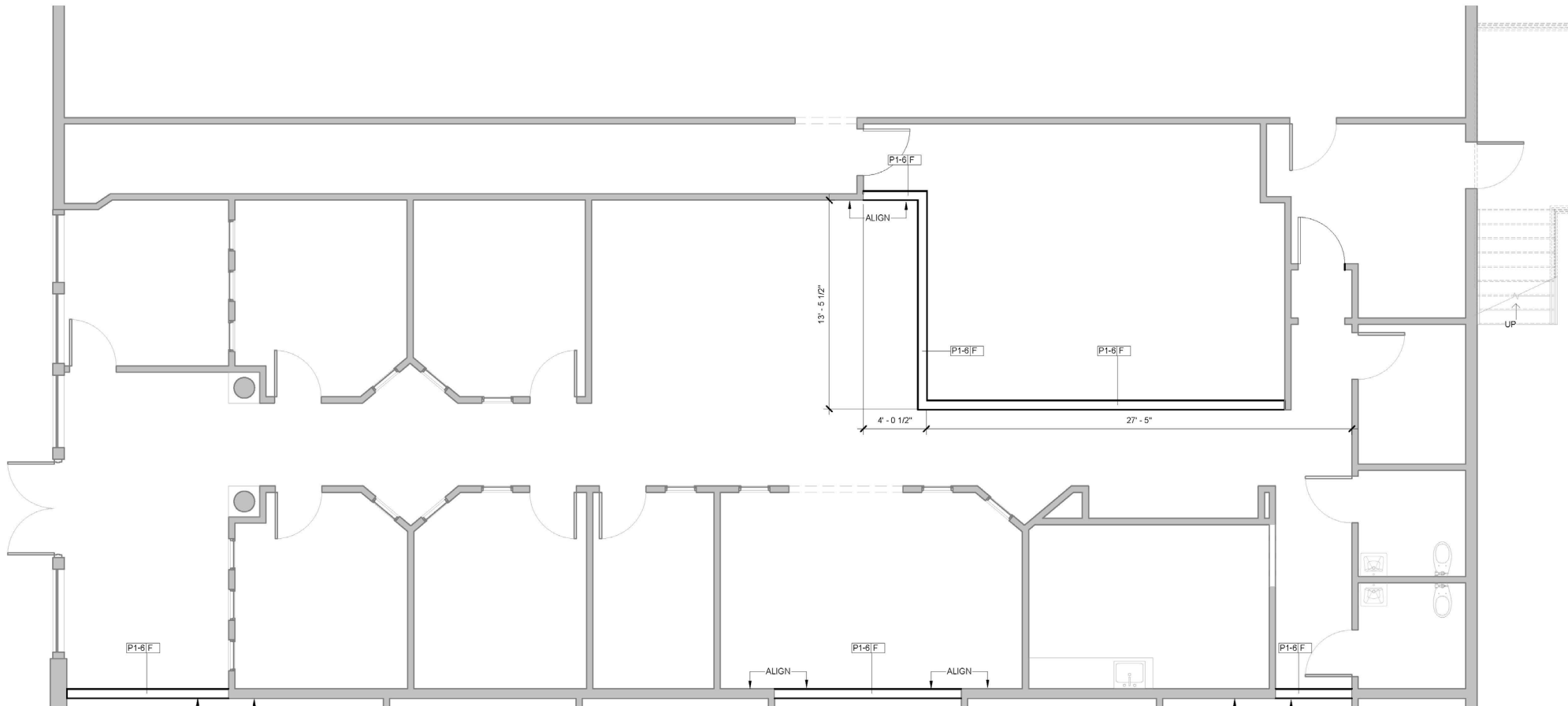
- Beautifully Remodeled 34,000 Square Foot Specialty Shopping Center
- Excellent Location on the Corner of the Two Main Thoroughfares Serving Desirable Downtown Los Gatos
- Highly Visible and Strong Demographics
- Exceptional Materials & Craftsmanship
- Rare & Abundant on-site Parking

Prime Commercial, Inc. has obtained the information contained herein from sources we deem reliable. However, we have not verified its accuracy and make no guarantee, warranty or representation about it. It is subject to errors, modification, omission, change of price and/or terms, prior lease sale or financing, or withdraw without notice. It may include projections, opinions, or assumptions or estimated for example only, and they may represent current or future performance of the property. You and your tax and legal advisors should conduct your own of the property and transaction. The information provided in this brochure are estimates only, not representations, and are not intended to be relied upon for any purpose. All demographic information contained in this brochure is obtained from esri.

SITE PLAN

Available Retail Units

- 2,536 Square Feet



Prime Commercial, Inc. has obtained the information contained herein from sources we deem reliable. However, we have not verified its accuracy and make no guarantee, warranty or representation about it. It is subject to errors, modification, omission, change of price and/or terms, prior lease sale or financing, or withdraw without notice. It may include projections, opinions, or assumptions or estimated for example only, and they may represent current or future performance of the property. You and your tax and legal advisors should conduct your own of the property and transaction. The information provided in this brochure are estimates only, not representations, and are not intended to be relied upon for any purpose. All demographic information contained in this brochure is obtained from esri.



**LOS GATOS
SHOPPING CENTER**

AREA MAP

DEMOGRAPHICS

	1 Mile	3 Miles	5 Miles
Population	12,625	61,387	218,094
Avg. HH Income	\$204,494	\$206,983	\$161,057

AVERAGE DAILY TRAFFIC

N. Santa Cruz Ave	16,086
Los Gatos Saratoga Rd	36,000
HWY 17	80,000



1543 Lafayette Street, Suite C
Santa Clara, CA 95050

T 408.879.4000
W primecommercialinc.com

LEASING AGENTS

Dixie Divine

408.879.4001
ddivine@primecommercialinc.com
CA LICENSE NO. 01481181 & 00926251

Doug Ferrari

408.879.4002
dferrari@primecommercialinc.com
CA LICENSE NO. 01032363

Prime Commercial, Inc. has obtained the information contained herein from sources we deem reliable. However, we have not verified its accuracy and make no guarantee, warranty or representation about it. It is subject to errors, modification, omission, change of price and/or terms, prior lease sale or financing, or withdraw without notice. It may include projections, opinions, or assumptions or estimated for example only, and they may represent current or future performance of the property. You and your tax and legal advisors should conduct your own of the property and transaction. The information provided in this brochure are estimates only, not representations, and are not intended to be relied upon for any purpose. All demographic information contained in this brochure is obtained from esri.