

569-573 UNIVERSITY AVE, LOS GATOS

Office Building For Lease / Sale Near Downtown Los Gatos



 **PRIMECOMMERCIAL**
INCORPORATED

FOR LEASE

408.879.4000

DIXIE DIVINE DOUG FERRARI
DDIVINE@PRIMECOMMERCIALINC.COM DFERRARI@PRIMECOMMERCIALINC.COM

WWW.PRIMECOMMERCIALINC.COM

 **PRIME COMMERCIAL**
INCORPORATED

Dixie Divine
408-879-4001
ddivine@primecommercialinc.com
LIC# 00926251

Doug Ferrari
408-879-4002
dferrari@primecommercialinc.com
LIC# 01032363

Prime Commercial, Inc. has obtained the information contained herein from sources we deem reliable. However, we have not verified its accuracy and make no guarantee, warranty or representation about it. It is subject to errors, modification, omission, change of price and/or terms, prior lease sale or financing, or withdraw without notice. It may include projections, opinions, or assumptions or estimated for example only, and they may represent current or future performance of the property. You and your tax and legal advisors should conduct your own of the property and transaction. The information provided in this brochure are estimates only, not representations, and are not intended to be relied upon for any purpose. All demographic information contained in this brochure is obtained from STDB.

LEASE HIGHLIGHTS - 573 University Ave

- 3,650 SF Two Story Professional Office Building
- Two Blocks North of Downtown Los Gatos
- Private Parking Lot
- \$2.50 / SF NNN
- Available Now!

SALE HIGHLIGHTS

- 569 Univeristy Avenue (1,225 sf)
- 573 University Avenue (3,650 sf)
 - Two Freestanding Office Buildings Totaling 4,875 SF
 - 12,440 Square Foot Lot
 - Recently Repaved with 15 Parking Stalls
 - Access off of University Avenue & Industrial Road
 - Zoned LM (Limited Manufacturing)
 - \$4,195,000.00

TRAFFIC COUNTS

- University Ave: 7,029 ADT
- N. Santa Cruz Ave: 14,721 ADT

DEMOGRAPHICS

	1 Mile	3 Miles	5 Miles
Population	12,625	67,339	230,150
Average HH Income	\$208,880	\$190,800	\$167,995



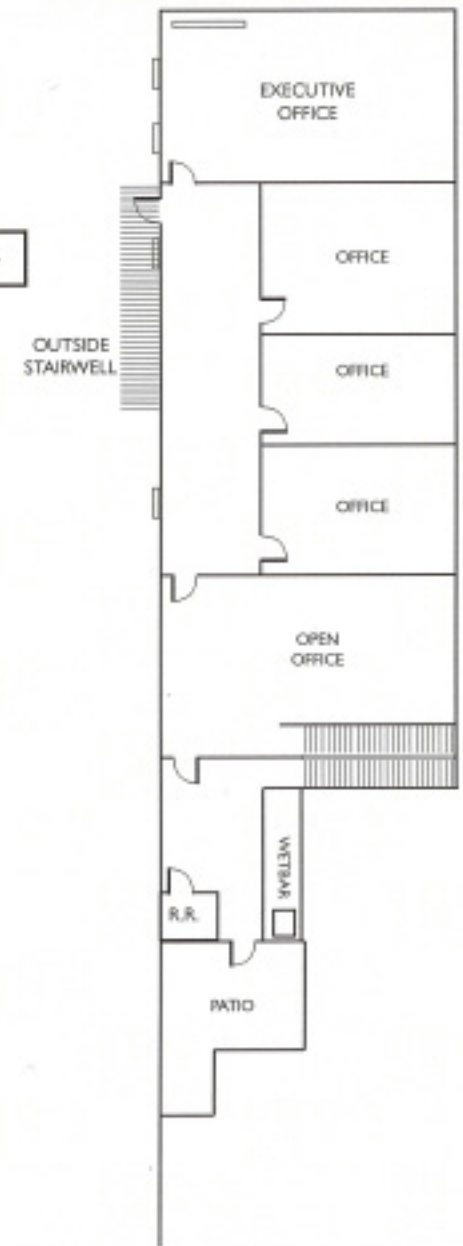
573 University Ave. FLOOR PLAN

**3,650 SF TOTAL
AVAILABLE NOW**

- 3 ground floor offices
- 4 second floor offices along with open office area



2nd Floor



PRIME COMMERCIAL
INCORPORATED

Dixie Divine
408-879-4001
ddivine@primecommercialinc.com
LIC# 00926251

Doug Ferrari
408-879-4002
dferrari@primecommercialinc.com
LIC# 01032363

AERIAL MAP



For More Information, Please Contact

Dixie Divine

ddivine@primecommercialinc.com
408-313-8900
LIC# 00926251

Doug Ferrari

dferrari@primecommercialinc.com
408-879-4002
LIC# 01032363



PRIME COMMERCIAL
INCORPORATED