

CAHALAN SQUARE

5750 SANTA TERESA BLVD., SAN JOSE, CA

Retail Space Available for Lease



DIXIE DIVINE | ddivine@primecommercialinc.com | 408-313-8900
DOUG FERRRI | dferrari@primecommercialinc.com | 408-718-0184

 **PRIME COMMERCIAL**
INCORPORATED

Prime Commercial, Inc. has obtained the information contained herein from sources we deem reliable. However, we have not verified its accuracy and make no guarantee, warranty or representation about it. It is subject to errors, modification, omission, change of price and/or terms, prior lease sale or financing, or withdraw without notice. It may include projections, opinions, or assumptions or estimated for example only, and they may represent current or future performance of the property. You and your tax and legal advisors should conduct your own of the property and transaction. The information provided in this brochure are estimates only, not representations, and are not intended to be relied upon for any purpose. All demographic information contained in this brochure is obtained from STDB.



PROPERTY HIGHLIGHTS

FEATURES

- Attractive, newly constructed retail strip center in desirable Almaden Valley area of San Jose
- 13,418 square feet divisible to 817 square feet
- Excellent demographics
- Outdoor dining areas available
- Ample parking ratio of
- Delivery anticipated June 2023
- \$3.00 NNN

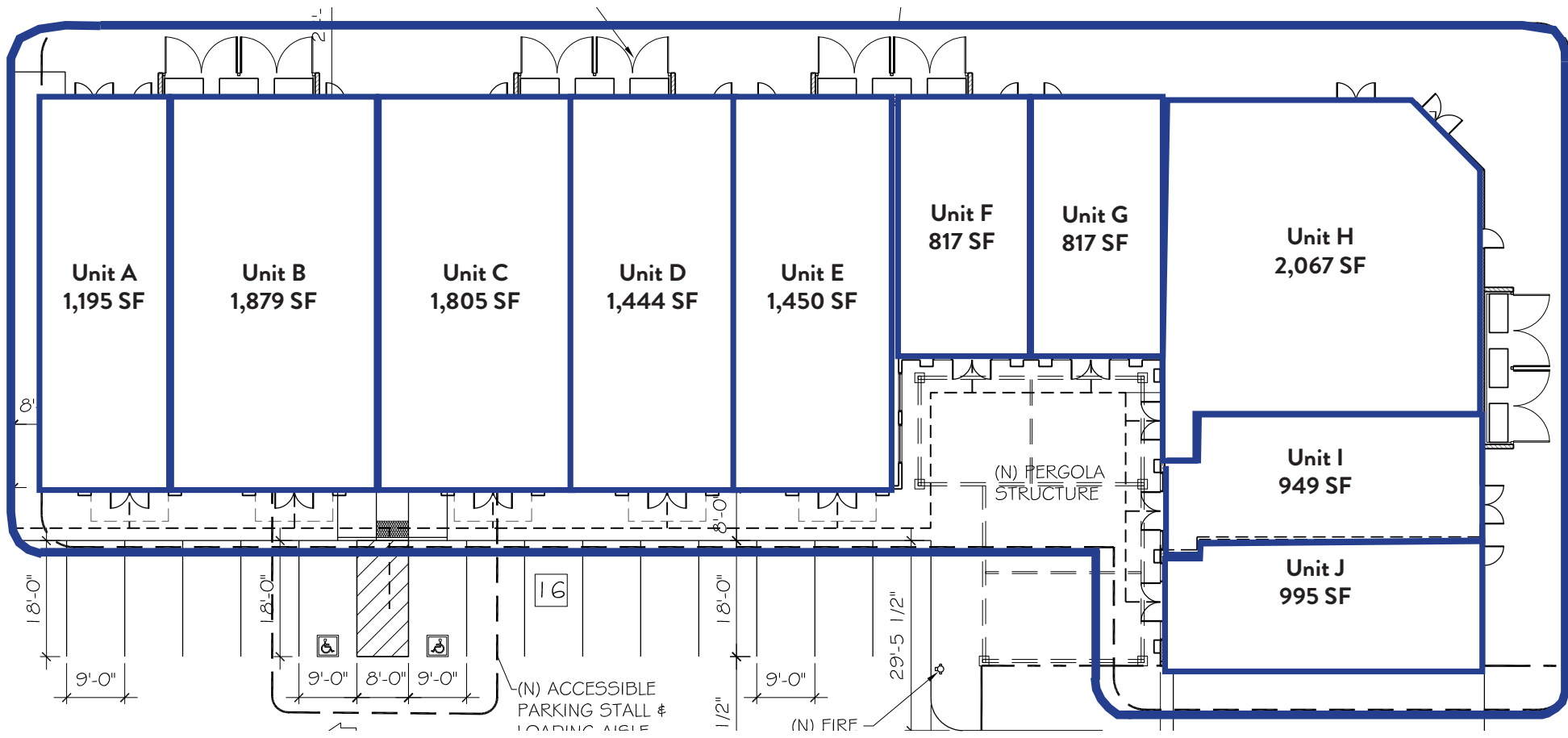
DEMOGRAPHICS

	1 MILE	3 MILES	5 MILES
Population	35,697	158,281	321,618
Avg. HH Income	\$148,752	\$174,765	\$171,836

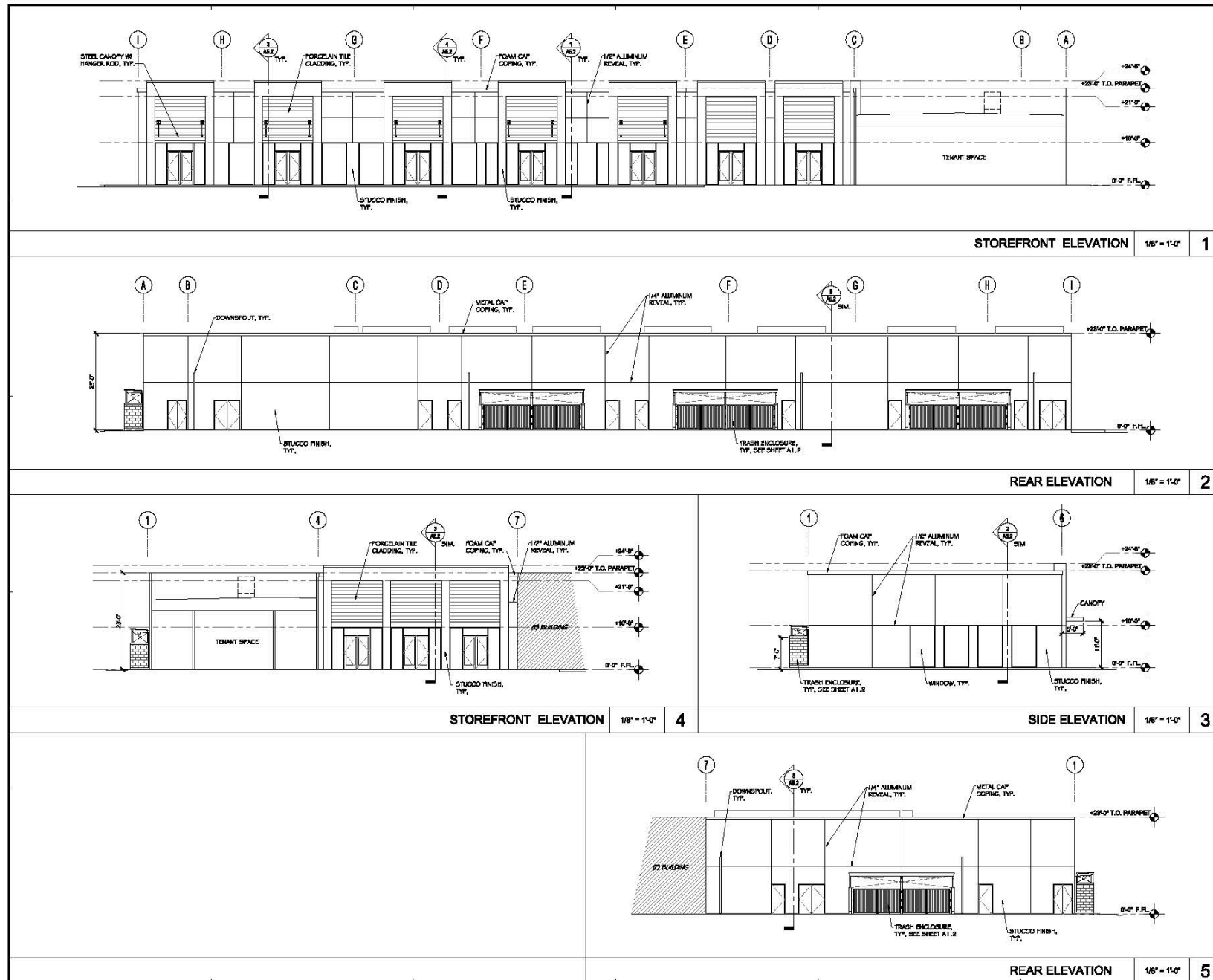
TRAFFIC COUNTS

- El Camino Real: 45,200 ADT
- Highway 82: 45,200 ADT

Floor Plan



Building Plan



**NEW RETAIL BUILDING
SHELL PACKAGE REVISION**

**5750 SANTA TERESA BLVD
SAN JOSE, CA 95123**

[illegible]

Aerial Map



5750 SANTA TERESA BLVD // Leasing Brochure

For More Information, Please Contact

Dixie Divine

ddivine@primecommercialinc.com
408-313-8900
LIC# 00926251

Doug Ferrari

dferrari@primecommercialinc.com
408-218-0184
LIC# 01032363

