

# RETAIL SPACES FOR LEASE TASMAN SQUARE

1121 & 1123 TASMAN DRIVE, SUNNYVALE, CA 94089



**PRIME COMMERCIAL**  
INCORPORATED  
[www.primecommercialinc.com](http://www.primecommercialinc.com)

1543 Lafayette Street, Suite C  
Santa Clara, CA 95050  
Office 408.879.4000

**DIXIE DIVINE**  
408.879.4001  
[ddivine@primecommercialinc.com](mailto:ddivine@primecommercialinc.com)  
CA LICENSE NO. 00926251 & 01481181

**DENISE LUPRETТА**  
408.314.3240  
[dlupretta@primecommercialinc.com](mailto:dlupretta@primecommercialinc.com)  
CA LICENSE NO. 01735925

Prime Commercial, Inc. has obtained the information contained herein from sources we deem reliable. However, we have not verified its accuracy and make no guarantee, warranty or representation about it. It is subject to errors, modification, omission, change of price and/or terms, prior lease sale or financing, or withdraw without notice. It may include projections, opinions, or assumptions or estimated for example only, and they may represent current or future performance of the property. You and your tax and legal advisors should conduct your own of the property and transaction. The information provided in this brochure are estimates only, not representations, and are not intended to be relied upon for any purpose. All demographic information contained in this brochure is obtained from esri.

# TASMAN SQUARE

1139 TASMAN DRIVE, SUNNYVALE, CA 94089

## Features

- Second Generation Restaurant with Class 1 Hood
- High Traffic Counts
- Strong Daytime Demographics
- Well Maintained Strip Center

## Available Units

- Unit 1123 - 900 SF: \$3/SF, NNN



**PC INC** PRIME COMMERCIAL  
INCORPORATED  
[www.primecommercialinc.com](http://www.primecommercialinc.com)

1543 Lafayette Street, Suite C  
Santa Clara, CA 95050  
Office 408.879.4000

**DIXIE DIVINE**  
408.879.4001  
[ddivine@primecommercialinc.com](mailto:ddivine@primecommercialinc.com)  
CA LICENSE NO. 00926251 & 01481181

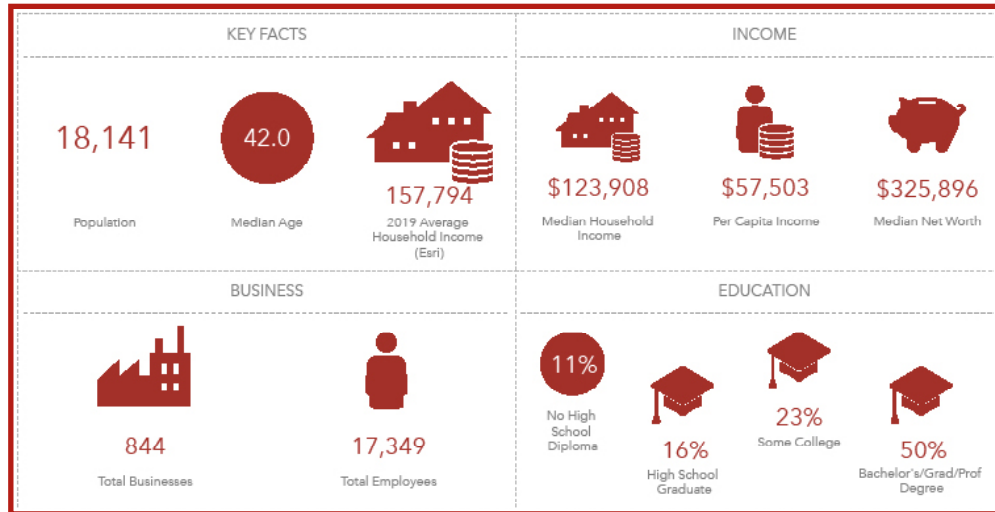
**DENISE LUPRETTE**  
408.314.3240  
[dlupretta@primecommercialinc.com](mailto:dlupretta@primecommercialinc.com)  
CA LICENSE NO. 01735925

Prime Commercial, Inc. has obtained the information contained herein from sources we deem reliable. However, we have not verified its accuracy and make no guarantee, warranty or representation about it. It is subject to errors, modification, omission, change of price and/or terms, prior lease sale or financing, or withdraw without notice. It may include projections, opinions, or assumptions or estimated for example only, and they may represent current or future performance of the property. You and your tax and legal advisors should conduct your own of the property and transaction. The information provided in this brochure are estimates only, not representations, and are not intended to be relied upon for any purpose. All demographic information contained in this brochure is obtained from esri.

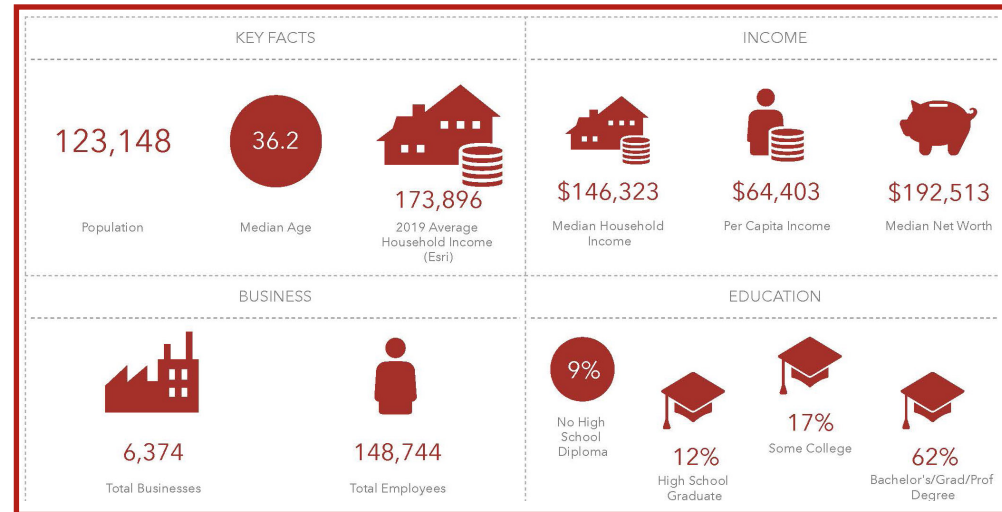


# Demographics

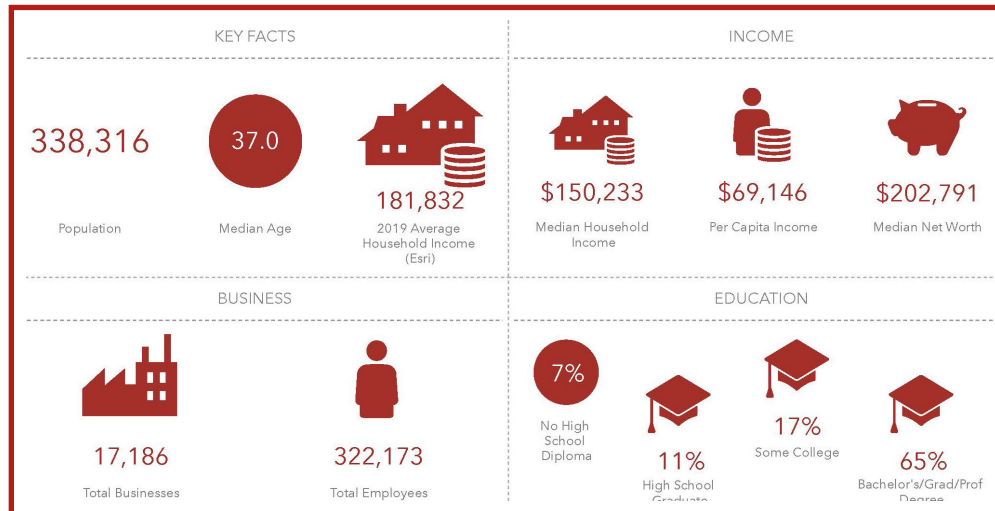
## 1 Mile



## 3 Mile



## 5 Mile

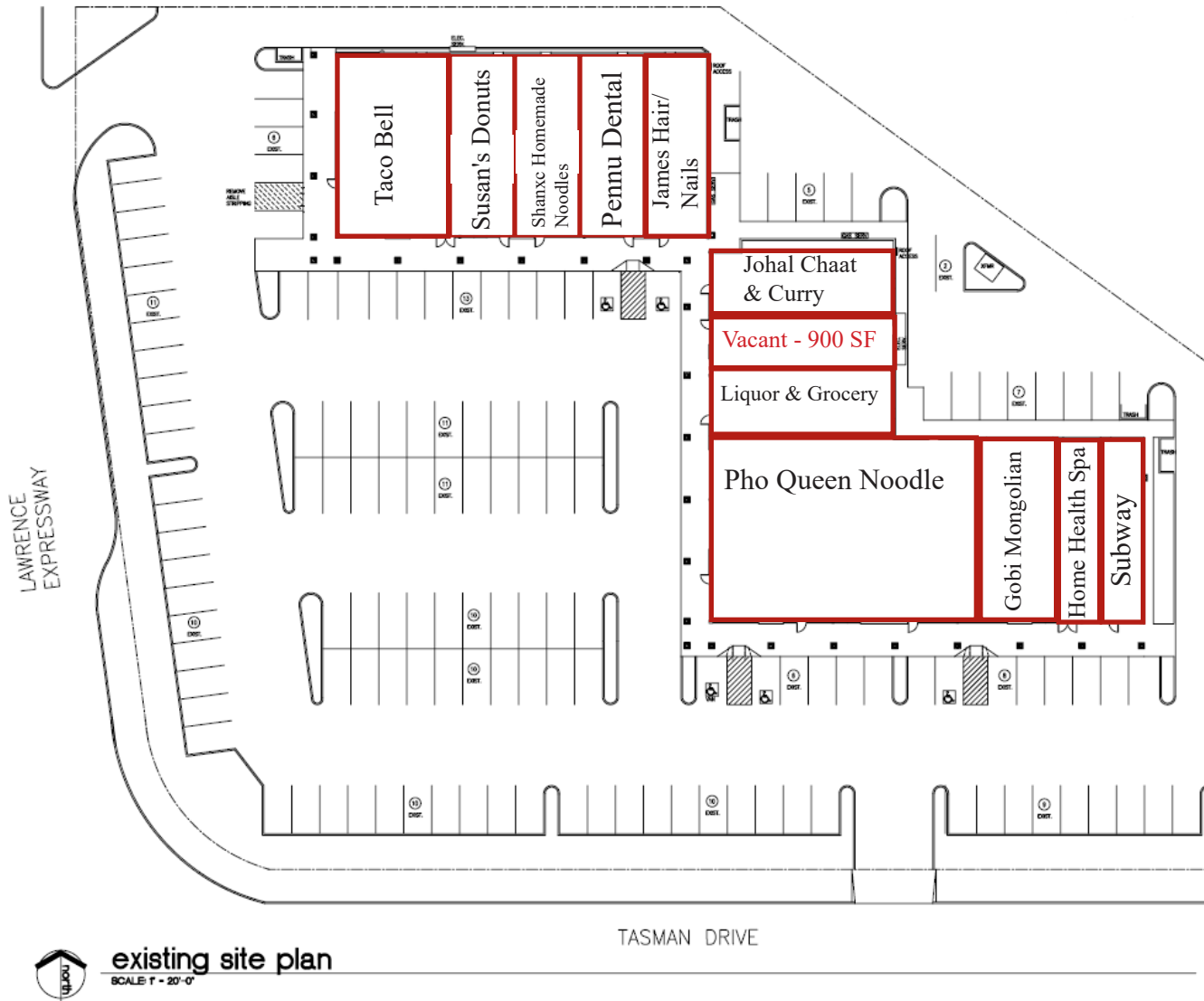


## Summary

|                | 1 Mile                  | 3 Miles                | 5 Miles   |
|----------------|-------------------------|------------------------|-----------|
| Population     | 18,141                  | 123,148                | 338,316   |
| Avg. HH Income | \$157,794               | \$173,896              | \$181,832 |
| Traffic Counts |                         |                        |           |
| ADT            | Lawrence Expy<br>53,200 | Tasman Drive<br>26,514 |           |

# Site Plan

Not to Scale\*



**PRIME COMMERCIAL**  
INCORPORATED  
[www.primecommercialinc.com](http://www.primecommercialinc.com)

1543 Lafayette Street, Suite C  
Santa Clara, CA 95050  
Office 408.879.4000

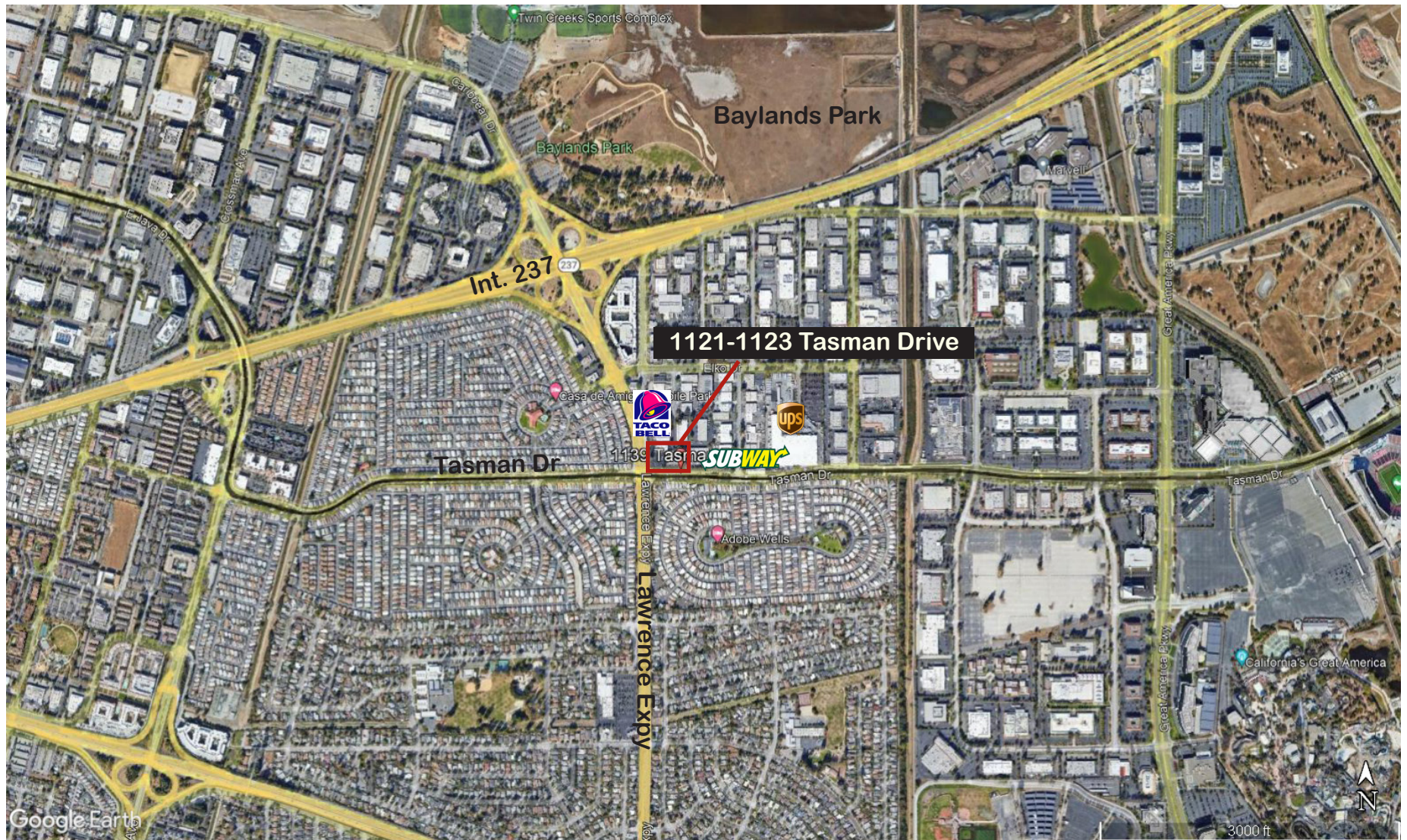
**DIXIE DIVINE**  
408.879.4001  
[ddivine@primecommercialinc.com](mailto:ddivine@primecommercialinc.com)  
CA LICENSE NO. 00926251 & 01481181

**DENISE LUPRETTE**  
408.314.3240  
[dlupretta@primecommercialinc.com](mailto:dlupretta@primecommercialinc.com)  
CA LICENSE NO. 01735925

Prime Commercial, Inc. has obtained the information contained herein from sources we deem reliable. However, we have not verified its accuracy and make no guarantee, warranty or representation about it. It is subject to errors, modification, omission, change of price and/or terms, prior lease sale or financing, or withdraw without notice. It may include projections, opinions, or assumptions or estimated for example only, and they may represent current or future performance of the property. You and your tax and legal advisors should conduct your own of the property and transaction. The information provided in this brochure are estimates only, not representations, and are not intended to be relied upon for any purpose. All demographic information contained in this brochure is obtained from esri.



# Ariel Map



**PRIME COMMERCIAL**  
INCORPORATED  
[www.primecommercialinc.com](http://www.primecommercialinc.com)

1543 Lafayette Street, Suite C  
Santa Clara, CA 95050  
Office 408.879.4000

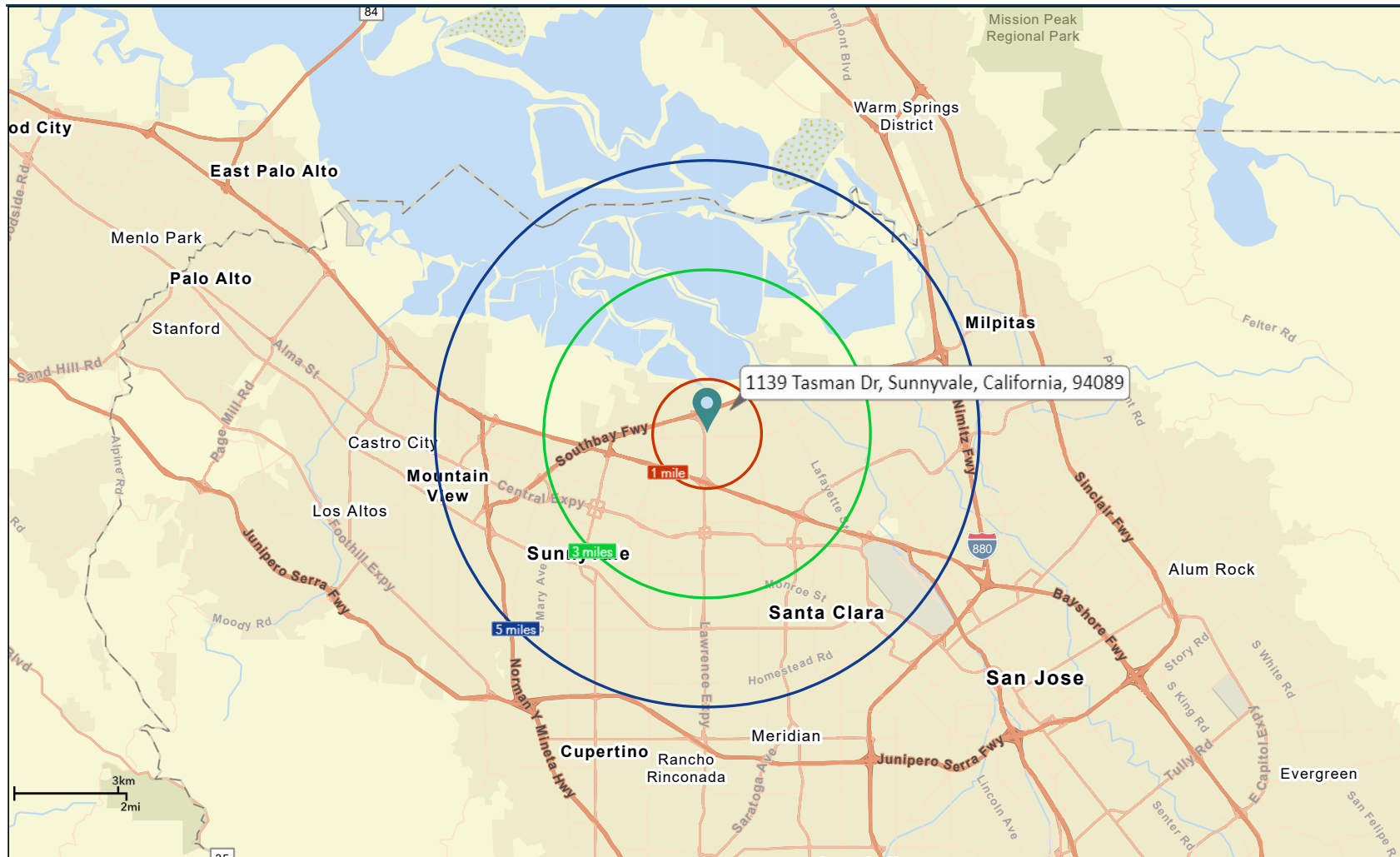
**DIXIE DIVINE**  
408.879.4001  
[ddivine@primecommercialinc.com](mailto:ddivine@primecommercialinc.com)  
CA LICENSE NO. 00926251 & 01481181

**DENISE LUPRETTE**  
408.314.3240  
[dlupretta@primecommercialinc.com](mailto:dlupretta@primecommercialinc.com)  
CA LICENSE NO. 01735925

Prime Commercial, Inc. has obtained the information contained herein from sources we deem reliable. However, we have not verified its accuracy and make no guarantee, warranty or representation about it. It is subject to errors, modification, omission, change of price and/or terms, prior lease sale or financing, or withdraw without notice. It may include projections, opinions, or assumptions or estimated for example only, and they may represent current or future performance of the property. You and your tax and legal advisors should conduct your own of the property and transaction. The information provided in this brochure are estimates only, not representations, and are not intended to be relied upon for any purpose. All demographic information contained in this brochure is obtained from esri.



# Mile Radius Map



**PRIME COMMERCIAL**  
INCORPORATED  
[www.primecommercialinc.com](http://www.primecommercialinc.com)

1543 Lafayette Street, Suite C  
Santa Clara, CA 95050  
Office 408.879.4000

**DIXIE DIVINE**  
408.879.4001  
[ddivine@primecommercialinc.com](mailto:ddivine@primecommercialinc.com)  
CA LICENSE NO. 00926251 & 01481181

**DENISE LUPRETTE**  
408.314.3240  
[dlupretta@primecommercialinc.com](mailto:dlupretta@primecommercialinc.com)  
CA LICENSE NO. 01735925

Prime Commercial, Inc. has obtained the information contained herein from sources we deem reliable. However, we have not verified its accuracy and make no guarantee, warranty or representation about it. It is subject to errors, modification, omission, change of price and/or terms, prior lease sale or financing, or withdraw without notice. It may include projections, opinions, or assumptions or estimated for example only, and they may represent current or future performance of the property. You and your tax and legal advisors should conduct your own of the property and transaction. The information provided in this brochure are estimates only, not representations, and are not intended to be relied upon for any purpose. All demographic information contained in this brochure is obtained from esri.