

DENTAL OFFICE SPACE FOR LEASE

516 W REMINGTON DRIVE

SUNNYVALE, CALIFORNIA 94087



 **PRIME COMMERCIAL**
INCORPORATED
www.primecommercialinc.com

1543 Lafayette Street, Suite C
Santa Clara, CA 95050
Office 408.879.4000

DIXIE DIVINE
408.879.4001
ddivine@primecommercialinc.com
CA LICENSE NO. 00926251 & 01481181

DENISE LUPRETТА
408.879.4000 ext. 214
dlupretta@primecommercialinc.com
CA LICENSE NO. 01735925

Prime Commercial, Inc. has obtained the information contained herein from sources we deem reliable. However, we have not verified its accuracy and make no guarantee, warranty or representation about it. It is subject to errors, modification, omission, change of price and/or terms, prior lease sale or financing, or withdraw without notice. It may include projections, opinions, or assumptions or estimated for example only, and they may represent current or future performance of the property. You and your tax and legal advisors should conduct your own of the property and transaction. The information provided in this brochure are estimates only, not representations, and are not intended to be relied upon for any purpose. All demographic information contained in this brochure is obtained from esri.

516 W REMINGTON

SUNNYVALE, CALIFORNIA 94087

FEATURES

- Suite 5A - 1,910 SF Former Dental Office Available
- Fully Built Out as Dental Office
- On Site Parking
- Close to Downtown Sunnyvale and Caltrain Station
- Convenient HWY 85 Access
- \$3.00/SF NNN

DEMOGRAPHICS & TRAFFIC COUNTS

	1 Mile	3 Miles	5 Miles
Population	31,029	229,474	484,941
Avg. HH Income	\$195,555	\$191,382	\$188,506

Sunnyvale-Saratoga Road	44,051 ADT
Remington Drive	16,206 ADT



PRIME COMMERCIAL
INCORPORATED
www.primecommercialinc.com

1543 Lafayette Street, Suite C
Santa Clara, CA 95050
Office 408.879.4000

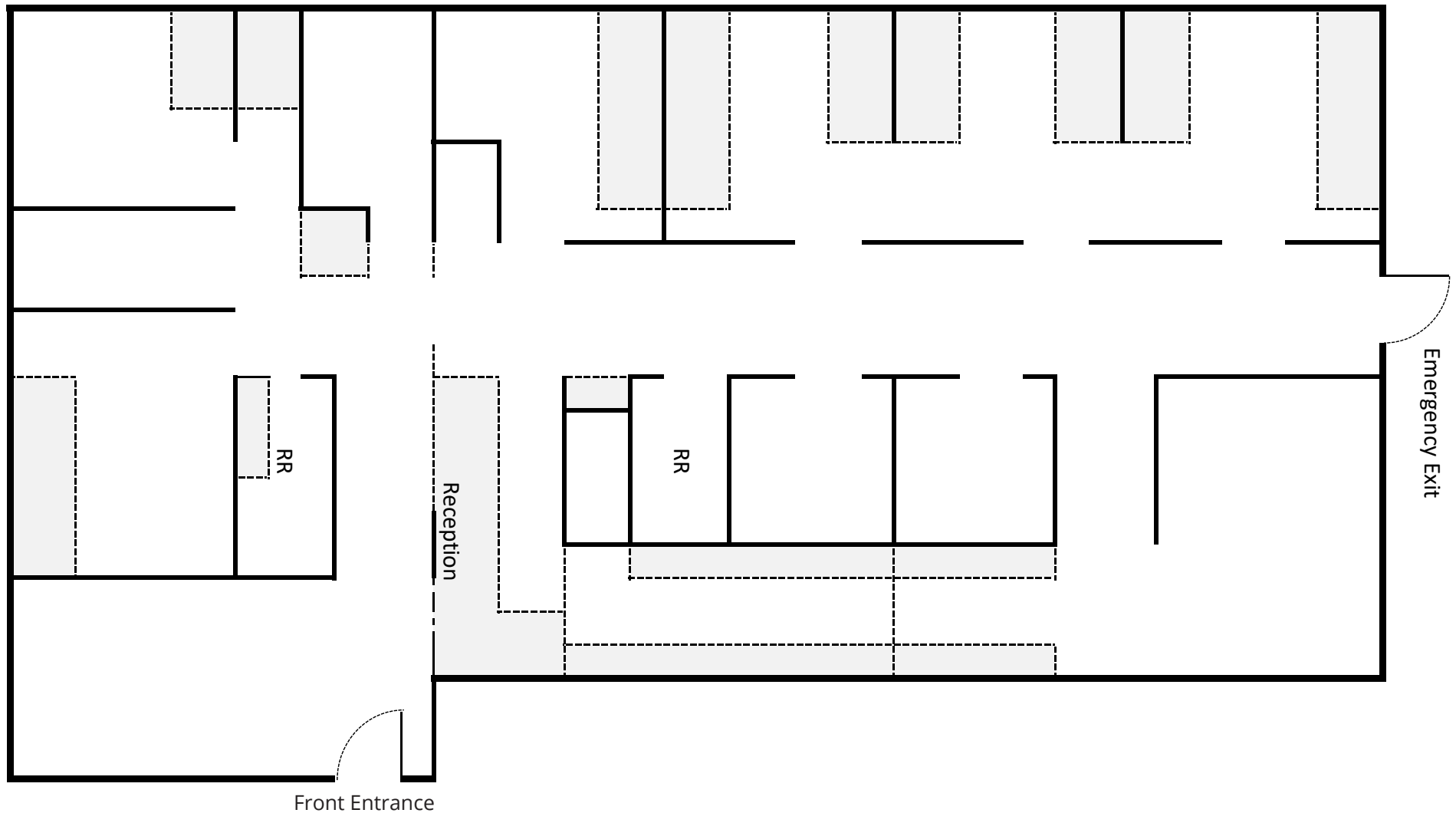
DIXIE DIVINE
408.879.4001
ddivine@primecommercialinc.com
CA LICENSE NO. 00926251 & 01481181

DENISE LUPRETTE
408.879.4000 ext. 214
dlupretta@primecommercialinc.com
CA LICENSE NO. 01735925

Prime Commercial, Inc. has obtained the information contained herein from sources we deem reliable. However, we have not verified its accuracy and make no guarantee, warranty or representation about it. It is subject to errors, modification, omission, change of price and/or terms, prior lease sale or financing, or withdraw without notice. It may include projections, opinions, or assumptions or estimated for example only, and they may represent current or future performance of the property. You and your tax and legal advisors should conduct your own of the property and transaction. The information provided in this brochure are estimates only, not representations, and are not intended to be relied upon for any purpose. All demographic information contained in this brochure is obtained from esri.

516 W REMINGTON

SUNNYVALE, CALIFORNIA 94087



PRIME COMMERCIAL
INCORPORATED
www.primecommercialinc.com

1543 Lafayette Street, Suite C
Santa Clara, CA 95050
Office 408.879.4000

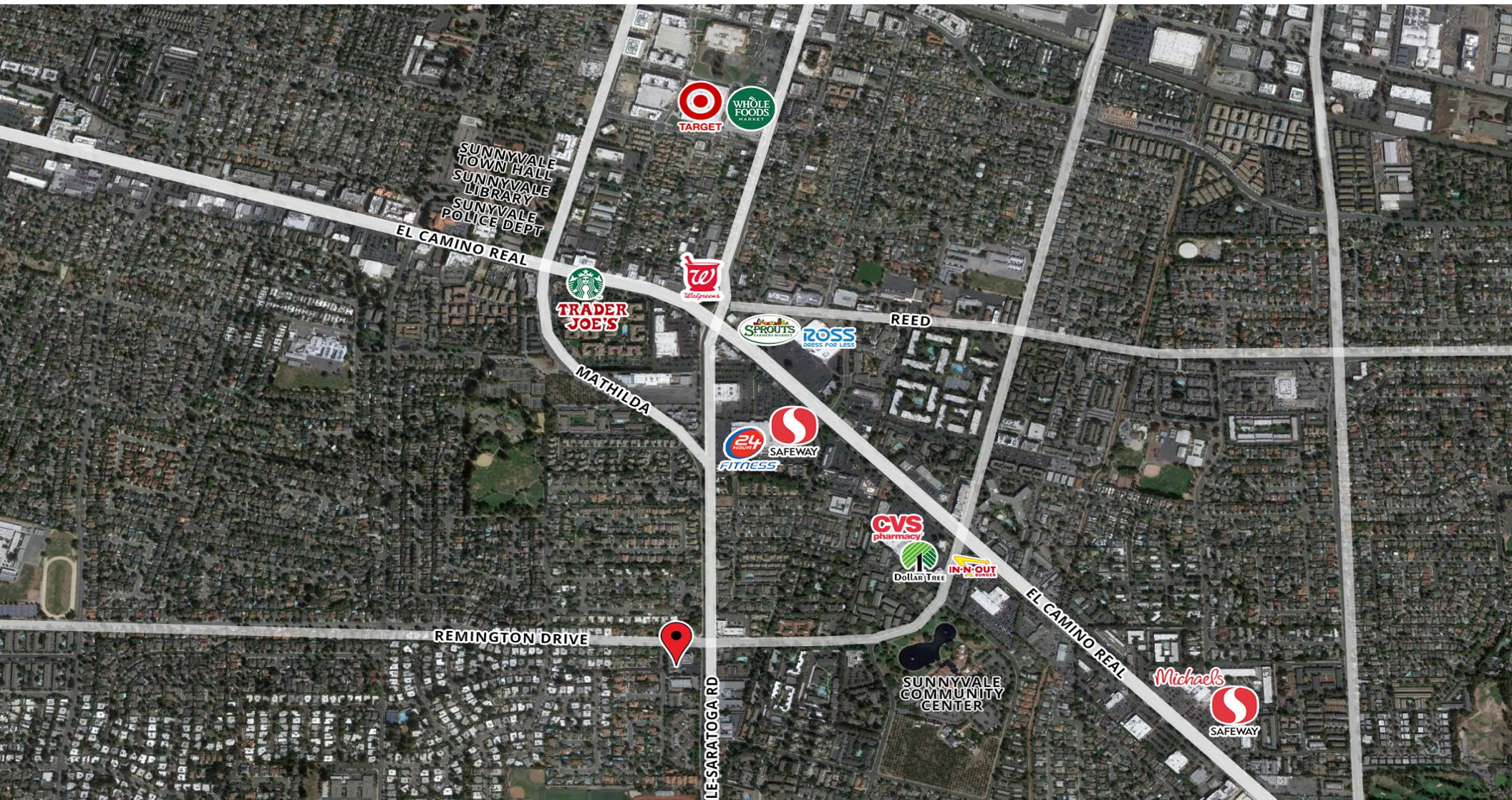
DIXIE DIVINE
408.879.4001
ddivine@primecommercialinc.com
CA LICENSE NO. 00926251 & 01481181

DENISE LUPRETТА
408.879.4000 ext. 214
dlupretta@primecommercialinc.com
CA LICENSE NO. 01735925

Prime Commercial, Inc. has obtained the information contained herein from sources we deem reliable. However, we have not verified its accuracy and make no guarantee, warranty or representation about it. It is subject to errors, modification, omission, change of price and/or terms, prior lease sale or financing, or withdraw without notice. It may include projections, opinions, or assumptions or estimated for example only, and they may represent current or future performance of the property. You and your tax and legal advisors should conduct your own of the property and transaction. The information provided in this brochure are estimates only, not representations, and are not intended to be relied upon for any purpose. All demographic information contained in this brochure is obtained from esri.

516 W REMINGTON

SUNNYVALE, CALIFORNIA 94087



PC INC PRIME COMMERCIAL
INCORPORATED
www.primecommercialinc.com

1543 Lafayette Street, Suite C
Santa Clara, CA 95050
Office 408.879.4000

DIXIE DIVINE
408.879.4001
ddivine@primecommercialinc.com
CA LICENSE NO. 00926251 & 01481181

DENISE LUPRETTE
408.879.4000 ext. 214
dlupretta@primecommercialinc.com
CA LICENSE NO. 01735925

Prime Commercial, Inc. has obtained the information contained herein from sources we deem reliable. However, we have not verified its accuracy and make no guarantee, warranty or representation about it. It is subject to errors, modification, omission, change of price and/or terms, prior lease sale or financing, or withdraw without notice. It may include projections, opinions, or assumptions or estimated for example only, and they may represent current or future performance of the property. You and your tax and legal advisors should conduct your own of the property and transaction. The information provided in this brochure are estimates only, not representations, and are not intended to be relied upon for any purpose. All demographic information contained in this brochure is obtained from esri.