

Live Oak Crossing

Corner of Brommer St. & 17th Ave.
SANTA CRUZ, CALIFORNIA



PC PRIME COMMERCIAL
INCORPORATED

1543 Lafayette Street, Suite C
Santa Clara, 95050
Office 408.879.4000
www.primecommercialinc.com

DOUG FERRARI
CA BRE 01032363
408.879.4002
dferrari@primecommercialinc.com

DIXIE DIVINE
CA BRE 00926251 & 01481181
408.879.4001
ddivine@primecommercialinc.com

Prime Commercial, Inc. has obtained the information contained herein from sources we deem reliable. However, we have not verified its accuracy and make no guarantee, warranty or representation about it. It is subject to errors, modification, omission, change of price and/or terms, prior lease sale or financing, or withdraw without notice. It may include projections, opinions, or assumptions or estimated for example only, and they may represent current or future performance of the property. You and your tax and legal advisors should conduct your own of the property and transaction. The information provided in this brochure are estimates only, not representations, and are not intended to be relied upon for any purpose. All demographic information contained in this brochure is obtained from STDB.

Live Oak Crossing

Corner of Brommer St. & 17th Ave.

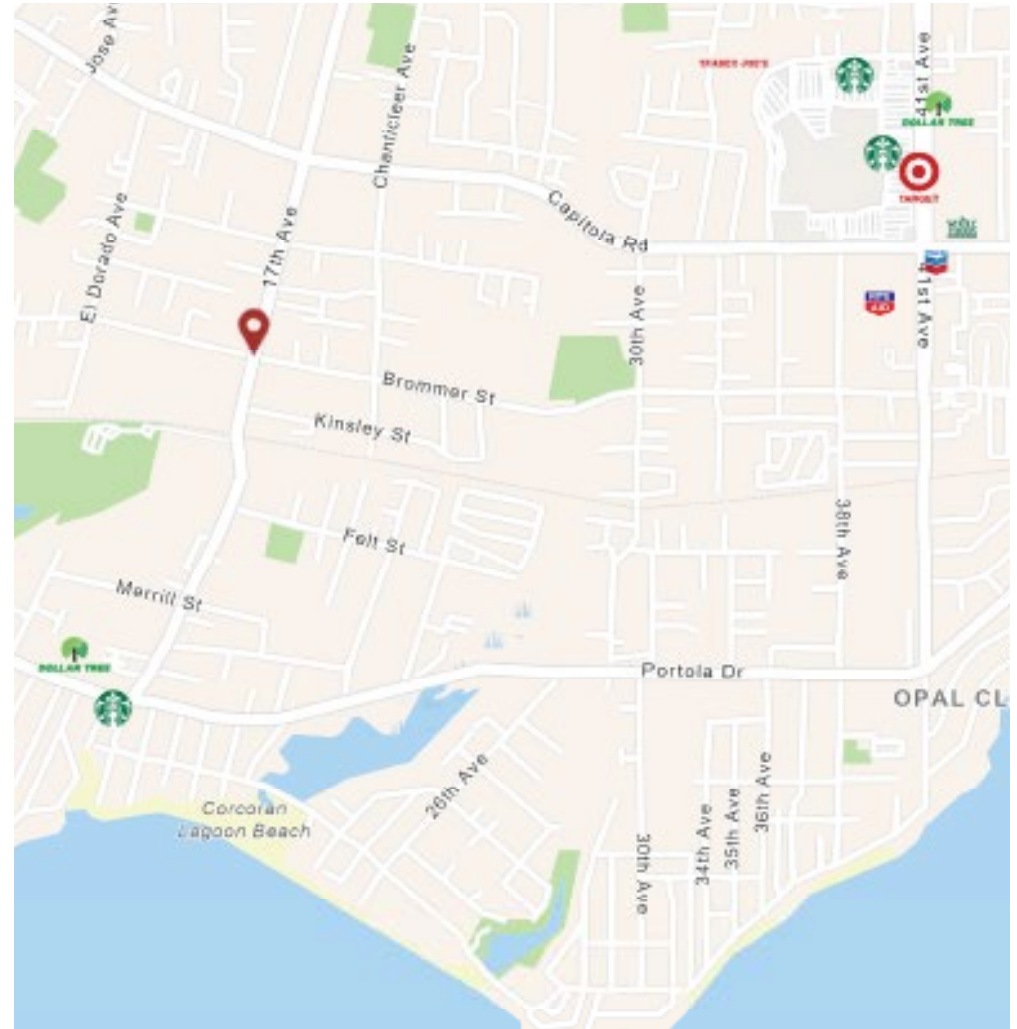
SANTA CRUZ, CALIFORNIA

Live Oak Crossing is a new mixed-use commercial/residential development with 13 residential units over 7,784 sf of retail space that lies at the southwest corner of Brommer Street and 17th Street in Santa Cruz.

Property Highlights

- Two story mixed use development coming 2020
- 6 Commercial Units Available, from 598 - 1,718 SF
- Property will have 13 Residential Units
- Shared Off-Street Parking
- High Visibility on Key Intersection with Combined 21,438 ADT
- Street Frontage for All Units
- Zoned C-1 Neighborhood Commercial
- For a Virtual Tour click below and select the "Commercial" layer on the bottom left

https://youriguide.com/1135_17th_ave_santa_cruz_ca/



Live Oak Crossing

Corner of Brommer St. & 17th Ave.
SANTA CRUZ, CALIFORNIA

Available Spaces

- Retail Unit 101 1,148 Square Feet
- Retail Unit 102 1,150 Square Feet
- Retail Unit 103 1,151 Square Feet (*Pending*)
- Retail Unit 104 1,718 Square Feet
- Grease Interceptor, Possible Patio Space*
- Retail Unit 105 Santa Cruz Beach Supply
- Retail Unit 106 1,014 Square Feet (*Pending*)
- Retail Unit 107 589 Square Feet



BROMMER STREET



1543 Lafayette Street, Suite C
Santa Clara, 95050
Office 408.879.4000
www.primecommercialinc.com

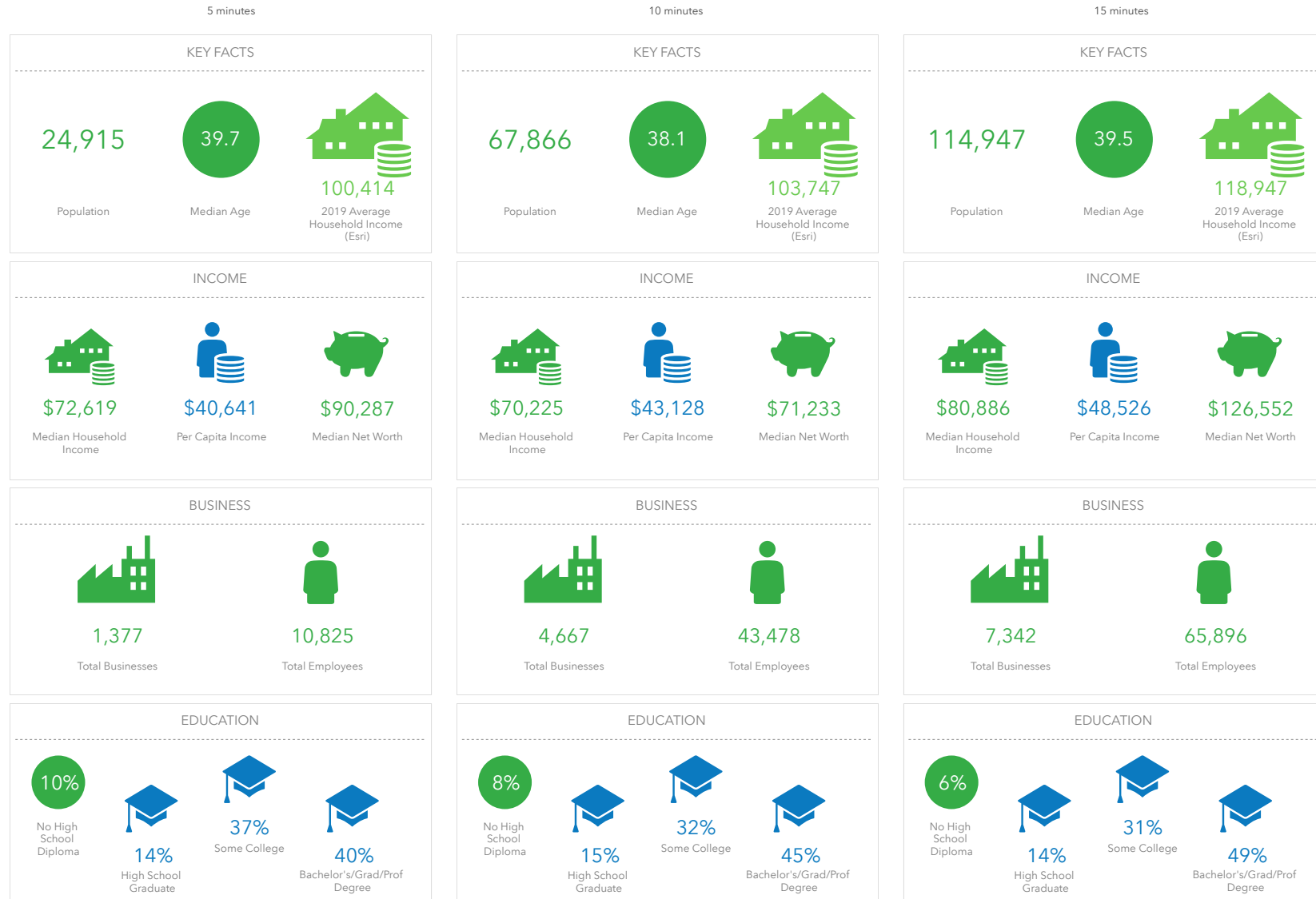
DOUG FERRARI
CA BRE 01032363
408.879.4002
dferrari@primecommercialinc.com

DIXIE DIVINE
CA BRE 00926251 & 01481181
408.879.4001
ddivine@primecommercialinc.com

Live Oak Crossing

Corner of Brommer St. & 17th Ave.
SANTA CRUZ, CALIFORNIA

Demographics



1543 Lafayette Street, Suite C
Santa Clara, 95050
Office 408.879.4000
www.primecommercialinc.com

DOUG FERRARI
CA BRE 01032363
408.879.4002
dferrari@primecommercialinc.com

DIXIE DIVINE
CA BRE 00926251 & 01481181
408.879.4001
ddivine@primecommercialinc.com