

Live Oak Crossing

Corner of Brommer St. & 17th Ave.

SANTA CRUZ, CALIFORNIA



1543 Lafayette Street, Suite C
Santa Clara, 95050
Office 408.879.4000
www.primecommercialinc.com

DOUG FERRARI
CA BRE 01032363
408.879.4002
dferrari@primecommercialinc.com

DIXIE DIVINE
CA BRE 00926251 & 01481181
408.879.4001
ddivine@primecommercialinc.com

Live Oak Crossing

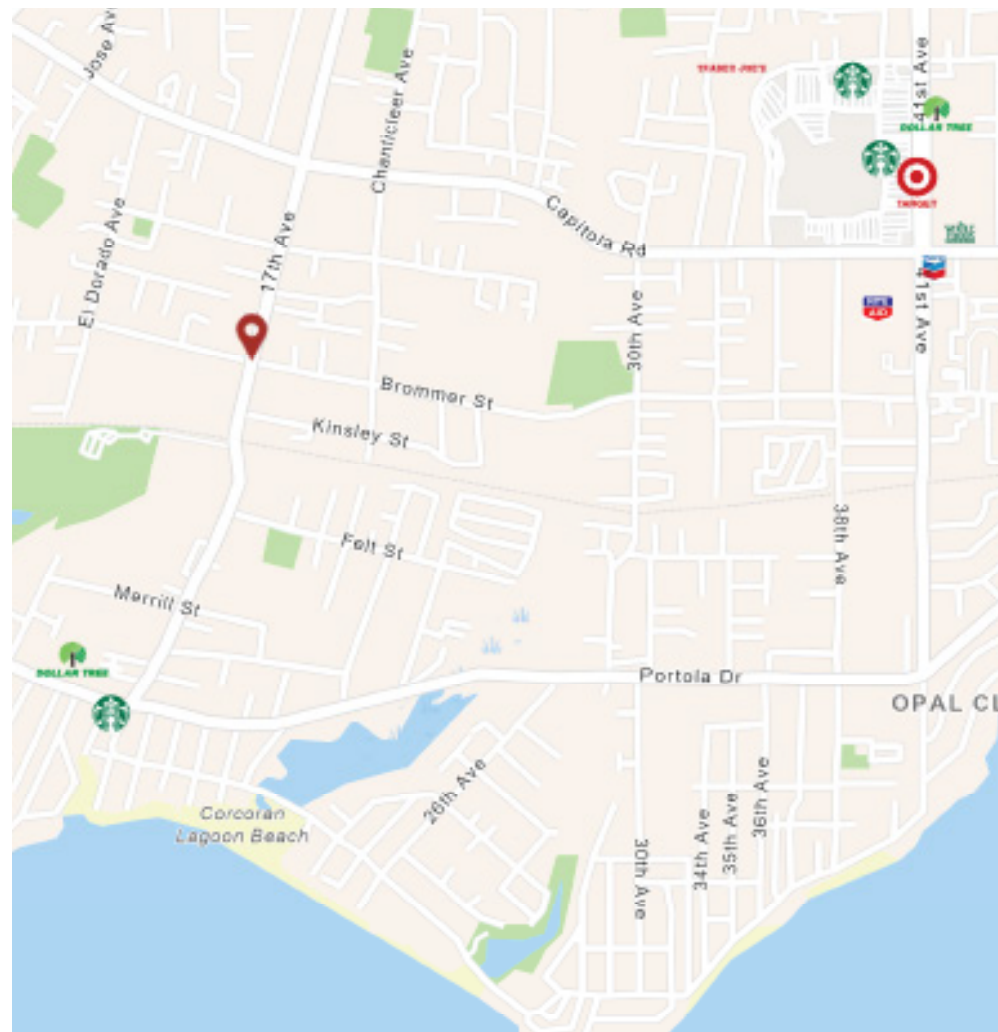
Corner of Brommer St. & 17th Ave.

SANTA CRUZ, CALIFORNIA

Live Oak Crossing is a new mixed-use commercial/residential development that lies at the southwest corner of Brommer Street and 17th Street in Santa Cruz.

Property Highlights

- Two story mixed use development coming 2020
- 3 Commercial Units Available, from 1,014 - 1,718 SF
- Property will have 13 Residential Units
- High Visibility on Key Intersection with Combined 21,438 ADT
- Street Frontage for All Units
- Zoned C-1 Neighborhood Commercial
- [View Virtual Tour Here](#)



1543 Lafayette Street, Suite C
Santa Clara, 95050
Office 408.879.4000
www.primecommercialinc.com

DOUG FERRARI
CA BRE 01032363
408.879.4002
dferrari@primecommercialinc.com

DIXIE DIVINE
CA BRE 00926251 & 01481181
408.879.4001
ddivine@primecommercialinc.com

Live Oak Crossing

Corner of Brommer St. & 17th Ave.
SANTA CRUZ, CALIFORNIA

Available Spaces

Retail Unit 3 1,151 Square Feet

Retail Unit 4 1,718 Square Feet

Retail Unit 5 1,014 Square Feet



1543 Lafayette Street, Suite C
Santa Clara, 95050
Office 408.879.4000
www.primecommercialinc.com

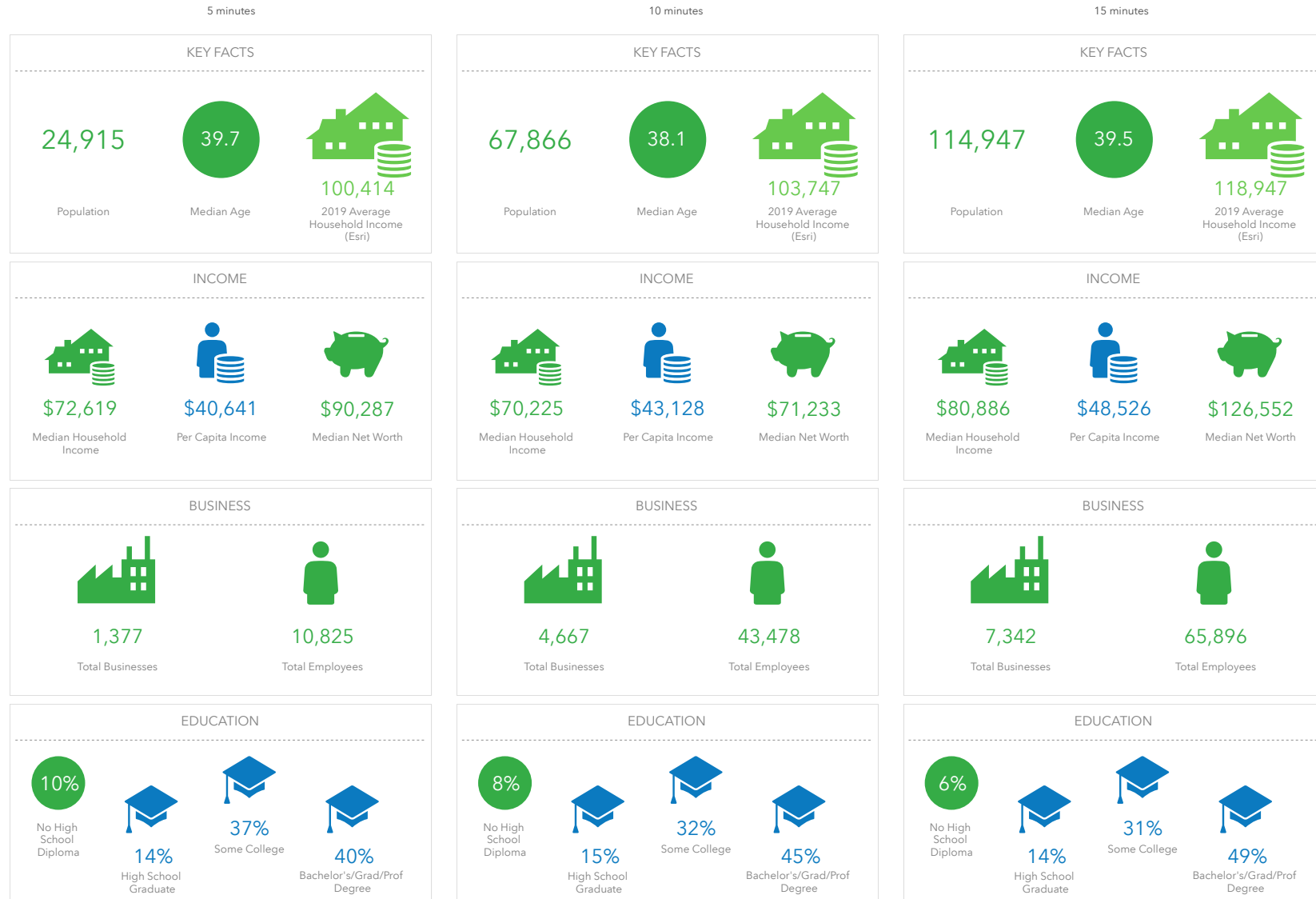
DOUG FERRARI
CA BRE 01032363
408.879.4002
dferrari@primecommercialinc.com

DIXIE DIVINE
CA BRE 00926251 & 01481181
408.879.4001
ddivine@primecommercialinc.com

Live Oak Crossing

Corner of Brommer St. & 17th Ave.
SANTA CRUZ, CALIFORNIA

Demographics



1543 Lafayette Street, Suite C
Santa Clara, 95050
Office 408.879.4000
www.primecommercialinc.com

DOUG FERRARI
CA BRE 01032363
408.879.4002
dferrari@primecommercialinc.com

DIXIE DIVINE
CA BRE 00926251 & 01481181
408.879.4001
ddivine@primecommercialinc.com