

Live Oak Crossing

Corner of Brommer St. & 17th Ave.
SANTA CRUZ, CALIFORNIA



PC PRIME COMMERCIAL
INCORPORATED

1543 Lafayette Street, Suite C
Santa Clara, 95050
Office 408.879.4000
www.primecommercialinc.com

DOUG FERRARI
CA BRE 01032363
408.879.4002
dferrari@primecommercialinc.com

DIXIE DIVINE
CA BRE 00926251 & 01481181
408.879.4001
ddivine@primecommercialinc.com

Prime Commercial, Inc. has obtained the information contained herein from sources we deem reliable. However, we have not verified its accuracy and make no guarantee, warranty or representation about it. It is subject to errors, modification, omission, change of price and/or terms, prior lease sale or financing, or withdraw without notice. It may include projections, opinions, or assumptions or estimated for example only, and they may represent current or future performance of the property. You and your tax and legal advisors should conduct your own of the property and transaction. The information provided in this brochure are estimates only, not representations, and are not intended to be relied upon for any purpose. All demographic information contained in this brochure is obtained from STDB.

Live Oak Crossing

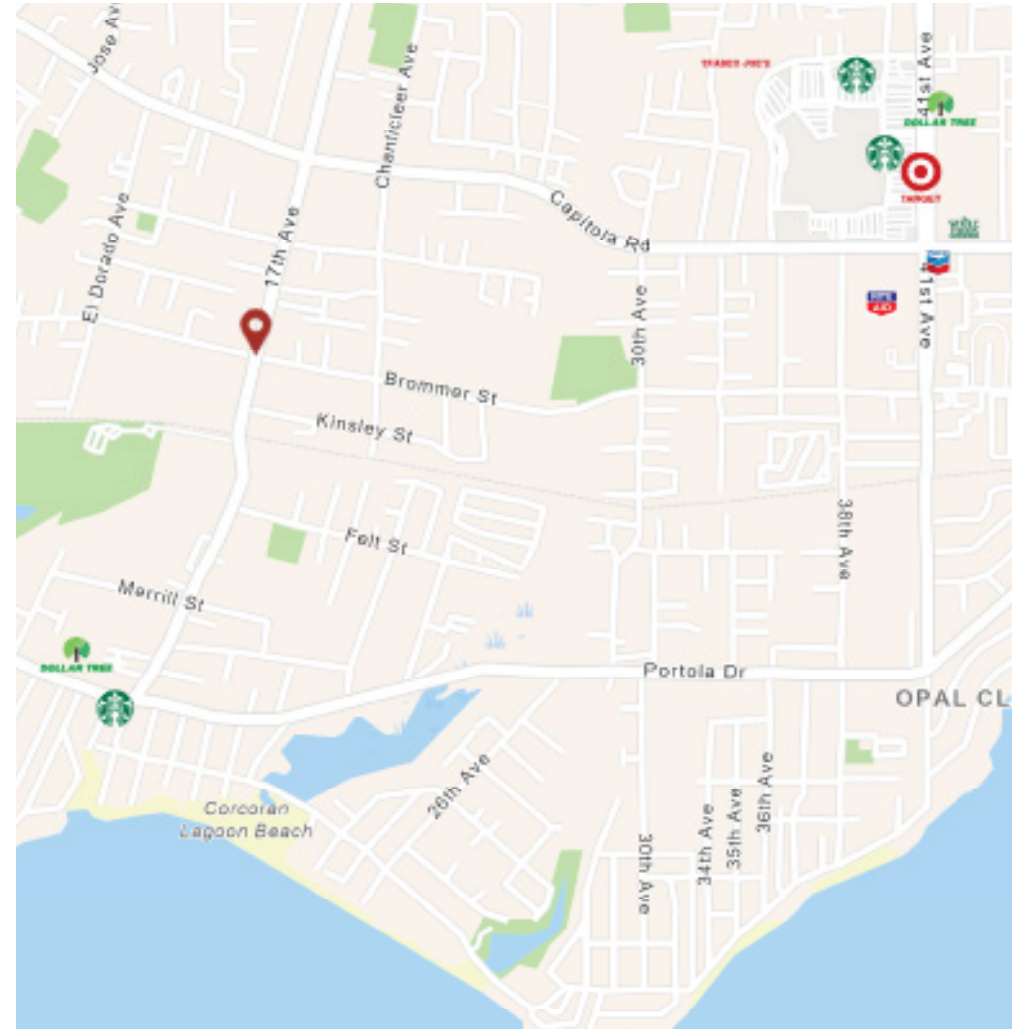
Corner of Brommer St. & 17th Ave.

SANTA CRUZ, CALIFORNIA

Live Oak Crossing is a new mixed-use commercial/residential development that lies at the southwest corner of Brommer Street and 17th Street in Santa Cruz.

Property Highlights

- Two story mixed use development coming 2020
- 4 Commercial Units Available, from 1,014 - 1,718 SF
- Property will have 13 Residential Units
- High Visibility on Key Intersection with Combined 21,438 ADT
- Street Frontage for All Units
- Zoned C-1 Neighborhood Commercial
- [View Virtual Tour Here](#)



Live Oak Crossing

Corner of Brommer St. & 17th Ave.
SANTA CRUZ, CALIFORNIA

Available Spaces

Retail Unit 2 1,150 Square Feet

*Lease Pending for Unit 2

Retail Unit 3 1,151 Square Feet

Retail Unit 4 1,718 Square Feet

Retail Unit 6 1,014 Square Feet



1543 Lafayette Street, Suite C
Santa Clara, 95050
Office 408.879.4000
www.primecommercialinc.com

DOUG FERRARI
CA BRE 01032363
408.879.4002
dferrari@primecommercialinc.com

DIXIE DIVINE
CA BRE 00926251 & 01481181
408.879.4001
ddivine@primecommercialinc.com

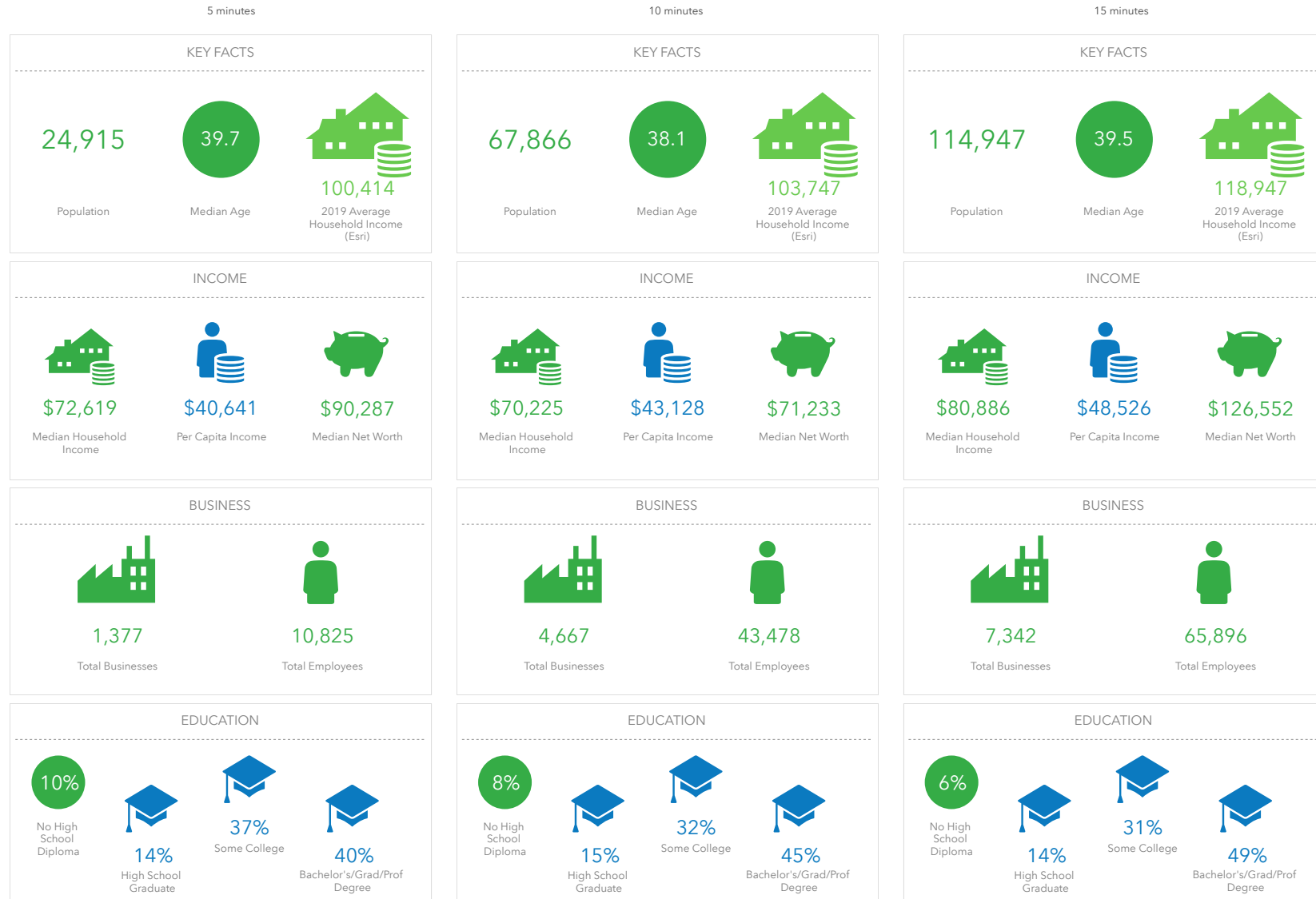
 PRIME COMMERCIAL
INCORPORATED

Prime Commercial, Inc. has obtained the information contained herein from sources we deem reliable. However, we have not verified its accuracy and make no guarantee, warranty or representation about it. It is subject to errors, modification, omission, change of price and/or terms, prior lease sale or financing, or withdraw without notice. It may include projections, opinions, or assumptions or estimated for example only, and they may represent current or future performance of the property. You and your tax and legal advisors should conduct your own of the property and transaction. The information provided in this brochure are estimates only, not representations, and are not intended to be relied upon for any purpose. All demographic information contained in this brochure is obtained from STDB.

Live Oak Crossing

Corner of Brommer St. & 17th Ave.
SANTA CRUZ, CALIFORNIA

Demographics



1543 Lafayette Street, Suite C
Santa Clara, 95050
Office 408.879.4000
www.primecommercialinc.com

DOUG FERRARI
CA BRE 01032363
408.879.4002
dferrari@primecommercialinc.com

DIXIE DIVINE
CA BRE 00926251 & 01481181
408.879.4001
ddivine@primecommercialinc.com