

# *New* Commercial Building For Sale

## 585 N. Capitol Avenue

San Jose, California



1543 Lafayette Street, Suite C  
Santa Clara, 95050  
Office 408.879.4000  
[www.primecommercialinc.com](http://www.primecommercialinc.com)

DOUG FERRARI  
CA BRE 01032363  
408.879.4002  
[dferrari@primecommercialinc.com](mailto:dferrari@primecommercialinc.com)

DIXIE DIVINE  
CA BRE 00926251 & 01481181  
408.879.4001  
[ddivine@primecommercialinc.com](mailto:ddivine@primecommercialinc.com)

Prime Commercial, Inc. has obtained the information contained herein from sources we deem reliable. However, we have not verified its accuracy and make no guarantee, warranty or representation about it. It is subject to errors, modification, omission, change of price and/or terms, prior lease sale or financing, or withdraw without notice. It may include projections, opinions, or assumptions or estimated for example only, and they may represent current or future performance of the property. You and your tax and legal advisors should conduct your own due diligence of the property and transaction. The information provided in this brochure are estimates only, not representations, and are not intended to be relied upon for any purpose. All demographic information contained in this brochure is obtained from esri.



# 585 N. Capitol Avenue

## San Jose, California

### OFFERING SUMMARY

Prime Commercial, Inc. has been exclusively retained to market and sell 585 N. Capitol Avenue in San Jose, California. This new two-story, commercial building has a convenient location just one block northeast from Highway 680 and McKee Road. This attractive, contemporary-style building contains 10,648 gross square feet with a usable area of approximately 9,310 square feet. The site is about 0.44 acres and there is surface parking for 30 vehicles. The building will be delivered in cold shell condition giving either an investor or owner-user the option of dividing the building and building out the interiors to their specifications. Amenities provided include an elevator, two fully functioning restrooms on the second floor and a paved and landscaped plaza at the south end of the building that is adjacent to a community green/sporting park.



 **PRIME COMMERCIAL**  
INCORPORATED

1543 Lafayette Street, Suite C  
Santa Clara, 95050  
Office 408.879.4000  
[www.primecommercialinc.com](http://www.primecommercialinc.com)

DOUG FERRARI  
CA BRE 01032363  
408.879.4002  
[dferrari@primecommercialinc.com](mailto:dferrari@primecommercialinc.com)

DIXIE DIVINE  
CA BRE 00926251 & 01481181  
408.879.4001  
[ddivine@primecommercialinc.com](mailto:ddivine@primecommercialinc.com)

Prime Commercial, Inc. has obtained the information contained herein from sources we deem reliable. However, we have not verified its accuracy and make no guarantee, warranty or representation about it. It is subject to errors, modification, omission, change of price and/or terms, prior lease sale or financing, or withdraw without notice. It may include projections, opinions, or assumptions or estimated for example only, and they may represent current or future performance of the property. You and your tax and legal advisors should conduct your own due diligence of the property and transaction. The information provided in this brochure are estimates only, not representations, and are not intended to be relied upon for any purpose. All demographic information contained in this brochure is obtained from esri.

# 585 N. Capitol Avenue

San Jose, California

## PROPERTY SUMMARY

Address: 585 N Capitol Avenue, San Jose

Parcel Number: 254-91-003

Total Gross Area: 10,648 Square Feet (Divisible)

Total Rentable Area: 9,310 Square Feet (Divisible)

Land Area: 0.44 Acres

Total Floors: Two (Elevator Served)

Parking: 30 Striped Spaces

Price: \$5,295,000.00



 **PRIME COMMERCIAL**  
INCORPORATED

1543 Lafayette Street, Suite C  
Santa Clara, 95050  
Office 408.879.4000  
[www.primecommercialinc.com](http://www.primecommercialinc.com)

DOUG FERRARI  
CA BRE 01032363  
408.879.4002  
[dferrari@primecommercialinc.com](mailto:dferrari@primecommercialinc.com)

DIXIE DIVINE  
CA BRE 00926251 & 01481181  
408.879.4001  
[ddivine@primecommercialinc.com](mailto:ddivine@primecommercialinc.com)

Prime Commercial, Inc. has obtained the information contained herein from sources we deem reliable. However, we have not verified its accuracy and make no guarantee, warranty or representation about it. It is subject to errors, modification, omission, change of price and/or terms, prior lease sale or financing, or withdraw without notice. It may include projections, opinions, or assumptions or estimated for example only, and they may represent current or future performance of the property. You and your tax and legal advisors should conduct your own due diligence of the property and transaction. The information provided in this brochure are estimates only, not representations, and are not intended to be relied upon for any purpose. All demographic information contained in this brochure is obtained from esri.



# 585 N. Capitol Avenue

San Jose, California

## PROPERTY HIGHLIGHTS

- New Construction (Completed 2020)
- Highly Visible Site at Signalized Intersection
- Dedicated Parking Lot with 30 Spaces
- Fee Simple and Unencumbered Allows the Buyer Attractive Financing Options
- Convenient to SCC VTA (Light Rail) and US HWY 680
- 10 Minutes from Downtown San Jose
- Perfect for Any Company Desiring Satellite Office Space



 **PRIME COMMERCIAL**  
INCORPORATED

1543 Lafayette Street, Suite C  
Santa Clara, 95050  
Office 408.879.4000  
[www.primecommercialinc.com](http://www.primecommercialinc.com)

DOUG FERRARI  
CA BRE 01032363  
408.879.4002  
[dferrari@primecommercialinc.com](mailto:dferrari@primecommercialinc.com)

DIXIE DIVINE  
CA BRE 00926251 & 01481181  
408.879.4001  
[ddivine@primecommercialinc.com](mailto:ddivine@primecommercialinc.com)

Prime Commercial, Inc. has obtained the information contained herein from sources we deem reliable. However, we have not verified its accuracy and make no guarantee, warranty or representation about it. It is subject to errors, modification, omission, change of price and/or terms, prior lease sale or financing, or withdraw without notice. It may include projections, opinions, or assumptions or estimated for example only, and they may represent current or future performance of the property. You and your tax and legal advisors should conduct your own due diligence of the property and transaction. The information provided in this brochure are estimates only, not representations, and are not intended to be relied upon for any purpose. All demographic information contained in this brochure is obtained from esri.

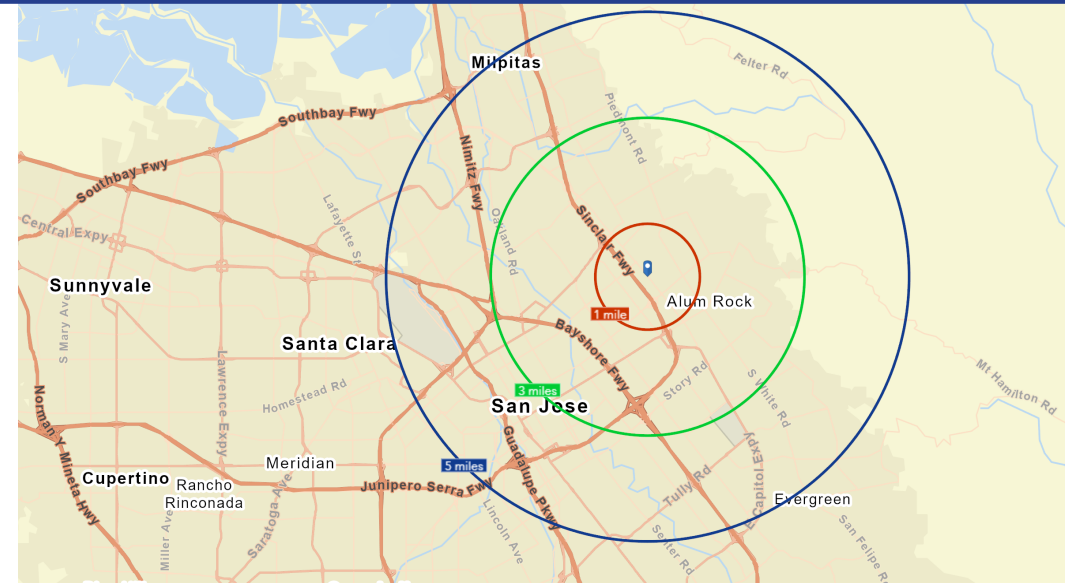


# 585 N. Capitol Avenue

San Jose, California

## LOCATION OVERVIEW

- Well located at the signalized intersection of N. Capitol Avenue and Gimelli Way in East San Jose
- US Highway 690 is located two blocks to the southwest via McKee Road
- Capitol Square Shopping Center, a 356,000 SF community center anchored by Target, Marshall's, Cardenas, Ross, and Walgreens is located just one block to the south
- Adjacent to the VTA Light Rail - McKee Station one block away
- Downtown San Jose is located 3.5 miles to the west and San Jose Mineta International Airport is 4.0 miles to the northwest



**PC** PRIME COMMERCIAL  
INCORPORATED

1543 Lafayette Street, Suite C  
Santa Clara, 95050  
Office 408.879.4000  
[www.primecommercialinc.com](http://www.primecommercialinc.com)

DOUG FERRARI  
CA BRE 01032363  
408.879.4002  
[dferrari@primecommercialinc.com](mailto:dferrari@primecommercialinc.com)

DIXIE DIVINE  
CA BRE 00926251 & 01481181  
408.879.4001  
[ddivine@primecommercialinc.com](mailto:ddivine@primecommercialinc.com)

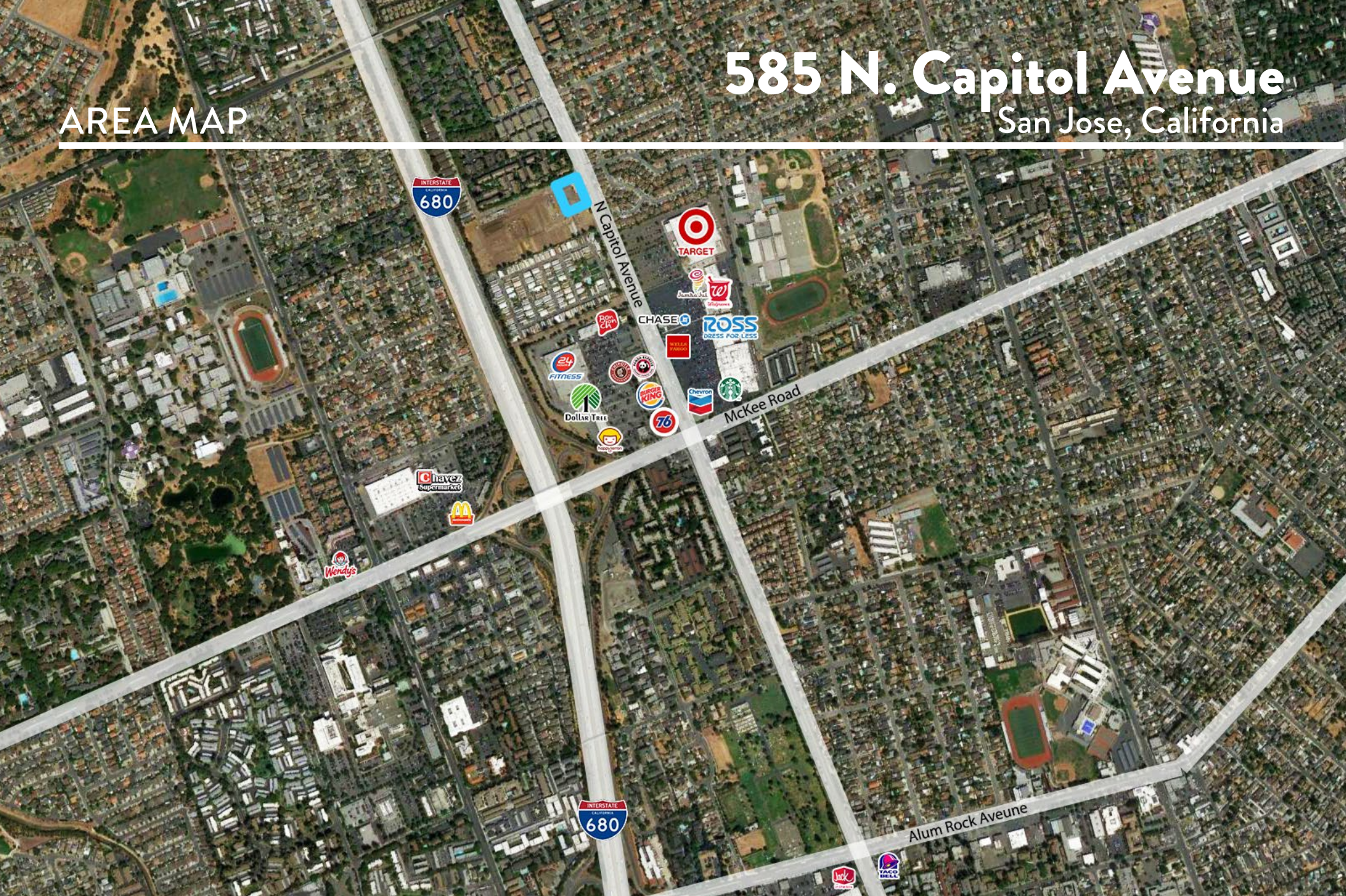
Prime Commercial, Inc. has obtained the information contained herein from sources we deem reliable. However, we have not verified its accuracy and make no guarantee, warranty or representation about it. It is subject to errors, modification, omission, change of price and/or terms, prior lease sale or financing, or withdraw without notice. It may include projections, opinions, or assumptions or estimated for example only, and they may represent current or future performance of the property. You and your tax and legal advisors should conduct your own due diligence of the property and transaction. The information provided in this brochure are estimates only, not representations, and are not intended to be relied upon for any purpose. All demographic information contained in this brochure is obtained from esri.



## AREA MAP

# 585 N. Capitol Avenue

San Jose, California



**PRIME COMMERCIAL**  
INCORPORATED

1543 Lafayette Street, Suite C  
Santa Clara, 95050  
Office 408.879.4000  
[www.primecommercialinc.com](http://www.primecommercialinc.com)

DOUG FERRARI  
CA BRE 01032363  
408.879.4002  
[dferrari@primecommercialinc.com](mailto:dferrari@primecommercialinc.com)

DIXIE DIVINE  
CA BRE 00926251 & 01481181  
408.879.4001  
[ddivine@primecommercialinc.com](mailto:ddivine@primecommercialinc.com)

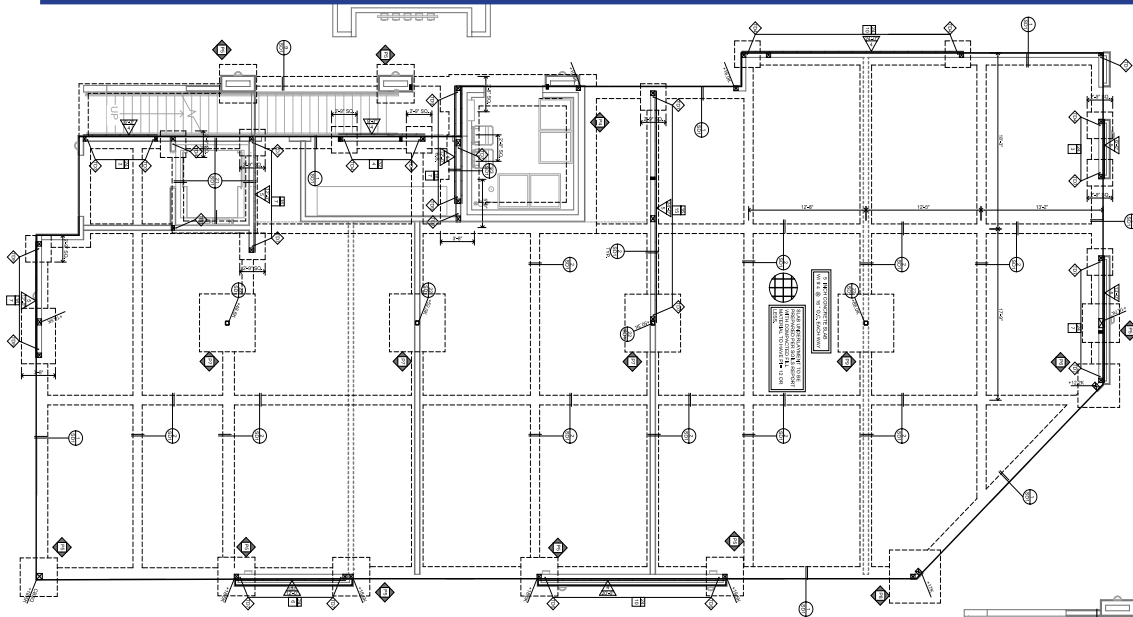
Prime Commercial, Inc. has obtained the information contained herein from sources we deem reliable. However, we have not verified its accuracy and make no guarantee, warranty or representation about it. It is subject to errors, modification, omission, change of price and/or terms, prior lease sale or financing, or withdraw without notice. It may include projections, opinions, or assumptions or estimated for example only, and they may represent current or future performance of the property. You and your tax and legal advisors should conduct your own due diligence of the property and transaction. The information provided in this brochure are estimates only, not representations, and are not intended to be relied upon for any purpose. All demographic information contained in this brochure is obtained from esri.



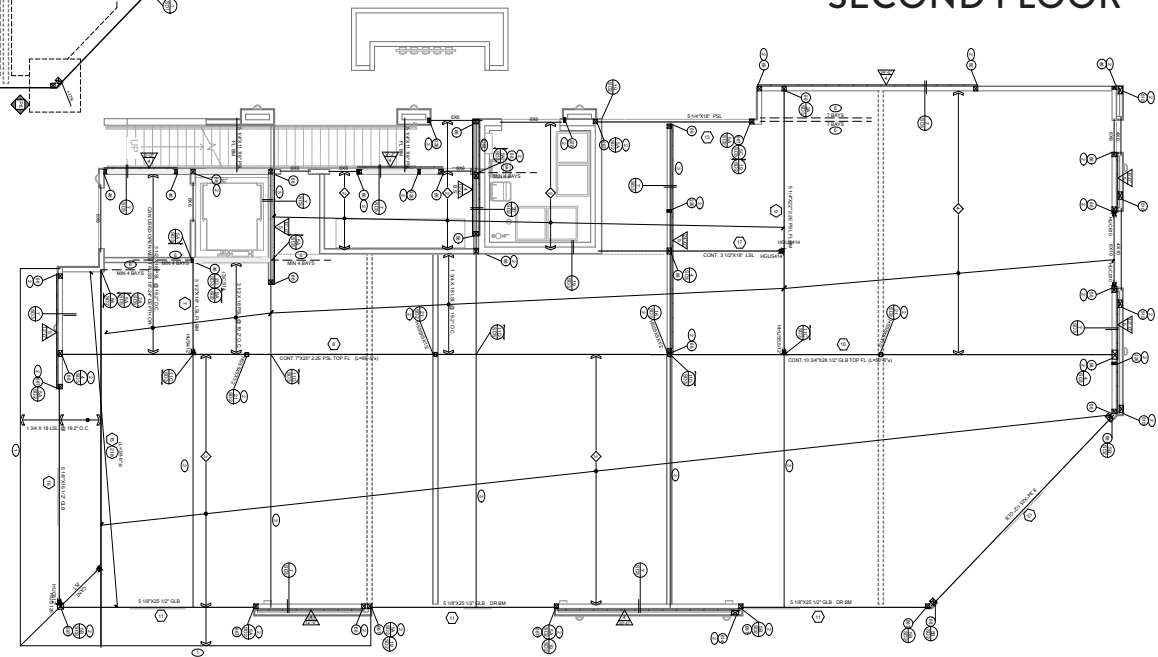
# 585 N. Capitol Avenue

San Jose, California

## SITE PLANS



FIRST FLOOR



SECOND FLOOR



1543 Lafayette Street, Suite C  
Santa Clara, 95050  
Office 408.879.4000  
[www.primecommercialinc.com](http://www.primecommercialinc.com)

DOUG FERRARI  
CA BRE 01032363  
408.879.4002  
[dferrari@primecommercialinc.com](mailto:dferrari@primecommercialinc.com)

DIXIE DIVINE  
CA BRE 00926251 & 01481181  
408.879.4001  
[ddivine@primecommercialinc.com](mailto:ddivine@primecommercialinc.com)

Prime Commercial, Inc. has obtained the information contained herein from sources we deem reliable. However, we have not verified its accuracy and make no guarantee, warranty or representation about it. It is subject to errors, modification, omission, change of price and/or terms, prior lease sale or financing, or withdraw without notice. It may include projections, opinions, or assumptions or estimated for example only, and they may represent current or future performance of the property. You and your tax and legal advisors should conduct your own due diligence of the property and transaction. The information provided in this brochure are estimates only, not representations, and are not intended to be relied upon for any purpose. All demographic information contained in this brochure is obtained from esri.

## PROPERTY PHOTOS

# 585 N. Capitol Avenue

San Jose, California



**PC** PRIME COMMERCIAL  
INCORPORATED

1543 Lafayette Street, Suite C  
Santa Clara, 95050  
Office 408.879.4000  
[www.primecommercialinc.com](http://www.primecommercialinc.com)

DOUG FERRARI  
CA BRE 01032363  
408.879.4002  
[dferrari@primecommercialinc.com](mailto:dferrari@primecommercialinc.com)

DIXIE DIVINE  
CA BRE 00926251 & 01481181  
408.879.4001  
[ddivine@primecommercialinc.com](mailto:ddivine@primecommercialinc.com)

Prime Commercial, Inc. has obtained the information contained herein from sources we deem reliable. However, we have not verified its accuracy and make no guarantee, warranty or representation about it. It is subject to errors, modification, omission, change of price and/or terms, prior lease sale or financing, or withdraw without notice. It may include projections, opinions, or assumptions or estimated for example only, and they may represent current or future performance of the property. You and your tax and legal advisors should conduct your own due diligence of the property and transaction. The information provided in this brochure are estimates only, not representations, and are not intended to be relied upon for any purpose. All demographic information contained in this brochure is obtained from esri.



# DEMOGRAPHICS

## 585 N. Capitol Avenue San Jose, California

