

# Gilroy

Medium Density  
Residential Land

FOR SALE 9130 and 9160 KERN AVENUE  
GILROY CALIFORNIA, 95020



## FEATURES

- 3.61 Acres (157,252 SF)
- Zoned : R3PUD (Medium Density Residential/ Planned Unit Development)
- APN: 790-17-002  
790-17-003
- Great In-Fill Site Near Schools, Parks, and Retail Nodes
- Please Call Agent for Further Details

## EXCLUSIVE AGENTS

### DOUG FERRARI

408.879.4002  
dferrari@primecommercialinc.com  
CA BRE 01032363

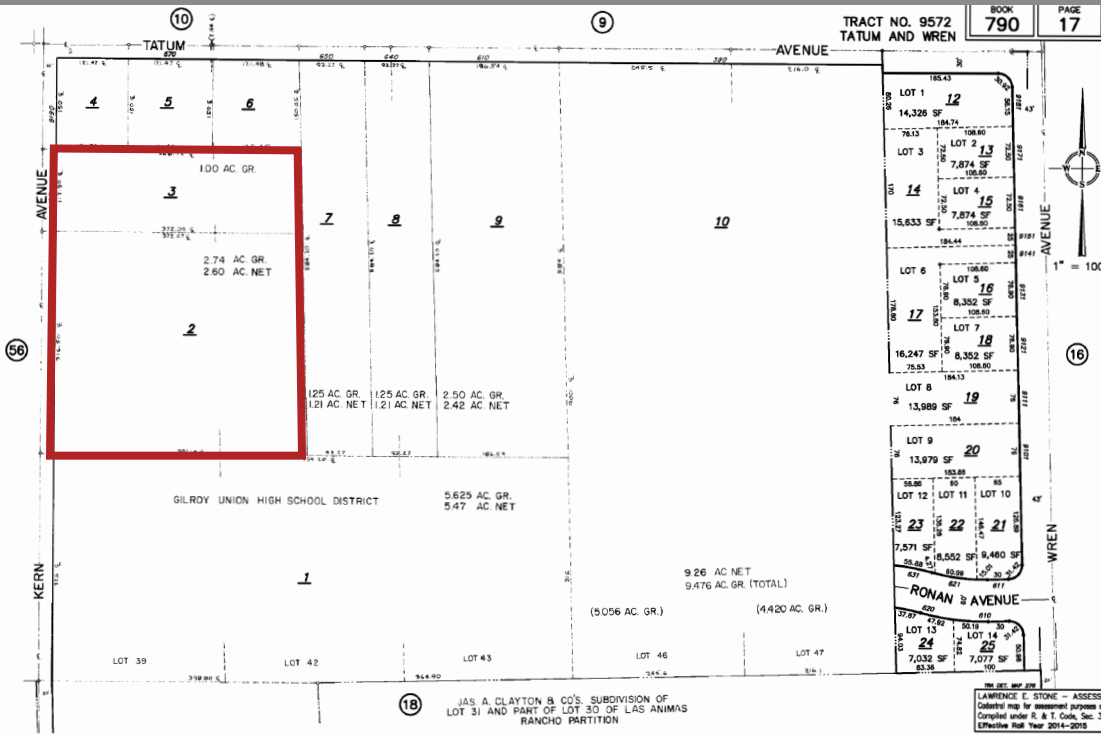
### DIXIE DIVINE

408.879.4001  
ddivine@primecommercialinc.com  
CA BRE 00926251 & 01481181

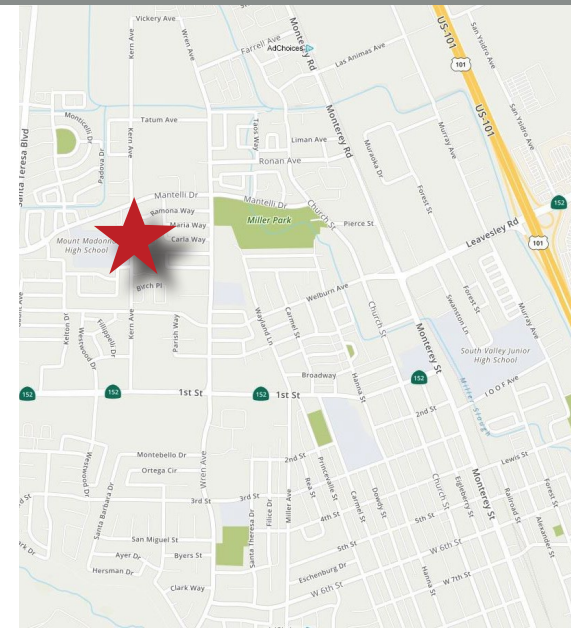
# Gilroy

Medium Density Residential Land

## FOR SALE 9130 and 9160 KERN AVENUE GILROY CALIFORNIA, 95020



This map/plat is being furnished as an aid in locating the herein described land in relation to adjoining streets, natural boundaries and other land, and is not a survey of the land depicted. Except to the extent a policy of title insurance is expressly modified by endorsement, if any, the Company does not insure a location of easements, acreage or other matters shown thereon.



### EXCLUSIVE AGENTS

#### DOUG FERRARI

408.879.4002  
dferrari@primecommercialinc.com  
CA BRE 01032363

#### DIXIE DIVINE

408.879.4001  
ddivine@primecommercialinc.com  
CA BRE 00926251 & 01481181



1543 LAFAYETTE STREET • SUITE C • SANTA CLARA • CA • 95050 | OFFICE 408.879.4000 | FAX 408.879.4004 | WWW.PRIMECOMMERCIALINC.COM

Prime Commercial, Inc. has obtained the information contained herein from sources we deem reliable. However, we have not verified its accuracy and make no guarantee, warranty or representation about it. It is subject to errors, modification, omission, change of price and/or terms, prior lease sale or financing, or withdrawal without notice. It may include projections, opinions, or assumptions or estimated for example only, and they may represent current or future performance of the property. You and your tax and legal advisors should conduct your own of the property and transaction. The information provided in this brochure are estimates only, not representations, and are not intended to be relied upon for any purpose. All demographic information contained in this brochure is obtained from STDB.