

Harvest Plaza

1295 East Dunne Avenue
Morgan Hill, CA



PRIME COMMERCIAL
INCORPORATED

Exclusive Agent

Denise Lupretta

408.879.4000 ext. 214

dlupretta@primecommercialinc.com

CA LICENSE NO. 01735925

1543 LAFAYETTE STREET · SUITE C · SANTA CLARA · CA · 95050 | OFFICE 408.879.4000 | FAX 408.879.4004 | WWW.PRIMECOMMERCIALINC.COM

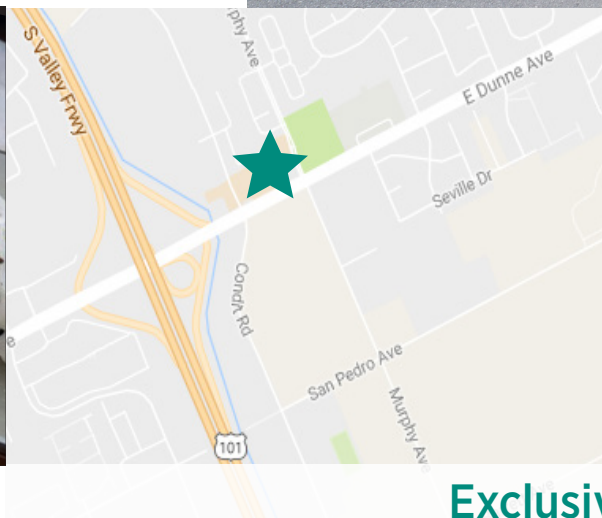
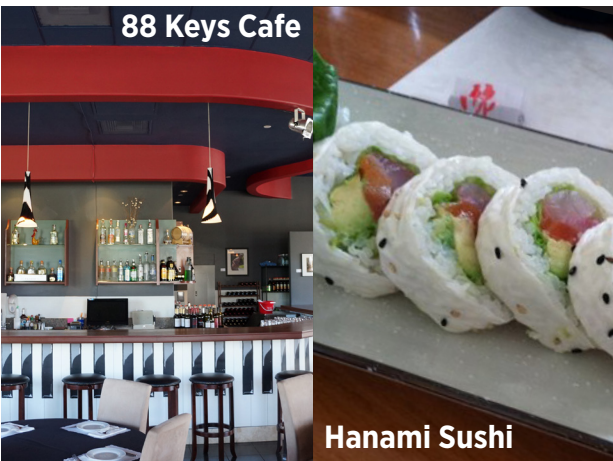
Prime Commercial, Inc. has obtained the information contained herein from sources we deem reliable. However, we have not verified its accuracy and make no guarantee, warranty or representation about it. It is subject to errors, modification, omission, change of price and/or terms, prior lease sale or financing, or withdraw without notice. It may include projections, opinions, or assumptions or estimated for example only, and they may represent current or future performance of the property. You and your tax and legal advisors should conduct your own of the property and transaction. The information provided in this brochure are estimates only, not representations, and are not intended to be relied upon for any purpose. All demographic information contained in this brochure is obtained from esri.

Harvest Plaza

1295 East Dunne Avenue
Morgan Hill, CA

Features

- Professional Office Space
- Great Tenant Mix: Financial Services, Real Estate, Medical/Dental Potential, Restaurants, Street-Level Retail
- Conveniently Located Less Than 1/4 Mile Away From US Hwy 101 at East Dunne
- Abundant Parking
- Elevator Served
- Next Door to 150 New Townhomes



Demographics

	1 Mile	3 Miles	5 Miles
Average HH Income	\$93,498	\$117,196	\$120,831
Population	14,951	41,754	51,491

Traffic Counts

E Dunne Avenue	14,319 ADT
Hwy 101	127,000 ADT

Exclusive Agent

Denise Lupretta

408.879.4000 ext. 214
dlupretta@primecommercialinc.com
CA LICENSE NO. 01735925



1543 LAFAYETTE STREET · SUITE C · SANTA CLARA · CA · 95050 | OFFICE 408.879.4000 | FAX 408.879.4004 | WWW.PRIMECOMMERCIALINC.COM

Prime Commercial, Inc. has obtained the information contained herein from sources we deem reliable. However, we have not verified its accuracy and make no guarantee, warranty or representation about it. It is subject to errors, modification, omission, change of price and/or terms, prior lease sale or financing, or withdraw without notice. It may include projections, opinions, or assumptions or estimated for example only, and they may represent current or future performance of the property. You and your tax and legal advisors should conduct your own of the property and transaction. The information provided in this brochure are estimates only, not representations, and are not intended to be relied upon for any purpose. All demographic information contained in this brochure is obtained from esri.

Harvest Plaza

1295 East Dunne Avenue
Morgan Hill, CA

Space Available

1st Floor Retail

Suite 160 - 1,732 SQ. FT.

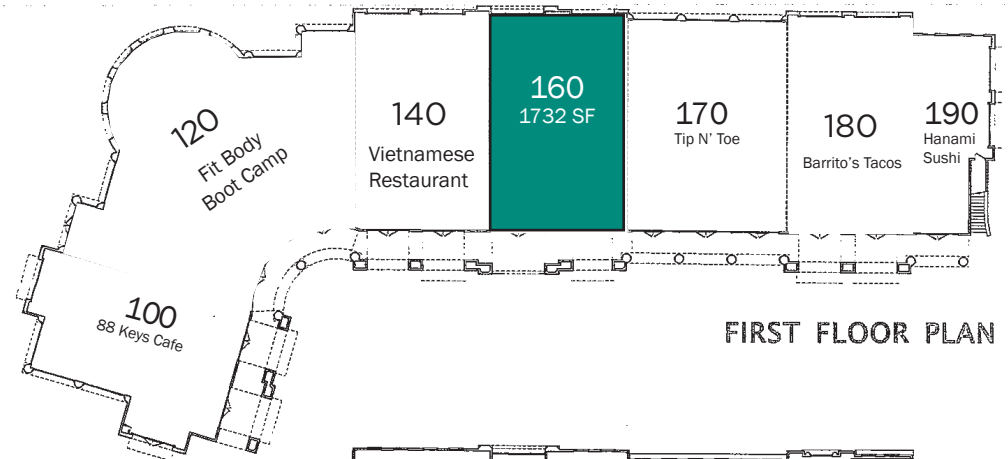
2nd Floor Office

Suite 235 - 990 SQ. FT.

Suite 225 - 990 SQ. FT.



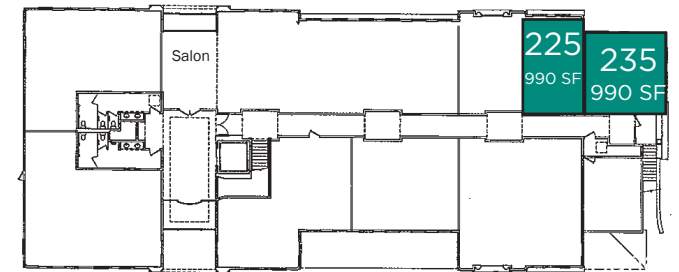
Site Plan



FIRST FLOOR PLAN

Space Pending

Space Available



SECOND FLOOR PLAN

Exclusive Agent

Denise Lupretta

408.879.4000 ext. 214

dlupretta@primecommercialinc.com

CA LICENSE NO. 01735925



1543 LAFAYETTE STREET · SUITE C · SANTA CLARA · CA · 95050 | OFFICE 408.879.4000 | FAX 408.879.4004 | WWW.PRIMECOMMERCIALINC.COM

Prime Commercial, Inc. has obtained the information contained herein from sources we deem reliable. However, we have not verified its accuracy and make no guarantee, warranty or representation about it. It is subject to errors, modification, omission, change of price and/or terms, prior lease sale or financing, or withdraw without notice. It may include projections, opinions, or assumptions or estimated for example only, and they may represent current or future performance of the property. You and your tax and legal advisors should conduct your own of the property and transaction. The information provided in this brochure are estimates only, not representations, and are not intended to be relied upon for any purpose. All demographic information contained in this brochure is obtained from esri.