

# Harvest Plaza

1295 East Dunne Avenue  
Morgan Hill, CA



**Exclusive Agent**

**Denise Lupretta**

408.879.4000 ext. 214

[dlupretta@primecommercialinc.com](mailto:dlupretta@primecommercialinc.com)

CA LICENSE NO. 01735925

1543 LAFAYETTE STREET · SUITE C · SANTA CLARA · CA · 95050 | OFFICE 408.879.4000 | FAX 408.879.4004 | [WWW.PRIMECOMMERCIALINC.COM](http://WWW.PRIMECOMMERCIALINC.COM)

Prime Commercial, Inc. has obtained the information contained herein from sources we deem reliable. However, we have not verified its accuracy and make no guarantee, warranty or representation about it. It is subject to errors, modification, omission, change of price and/or terms, prior lease sale or financing, or withdraw without notice. It may include projections, opinions, or assumptions or estimated for example only, and they may represent current or future performance of the property. You and your tax and legal advisors should conduct your own of the property and transaction. The information provided in this brochure are estimates only, not representations, and are not intended to be relied upon for any purpose. All demographic information contained in this brochure is obtained from esri.

# Harvest Plaza

1295 East Dunne Avenue  
Morgan Hill, CA

## Features

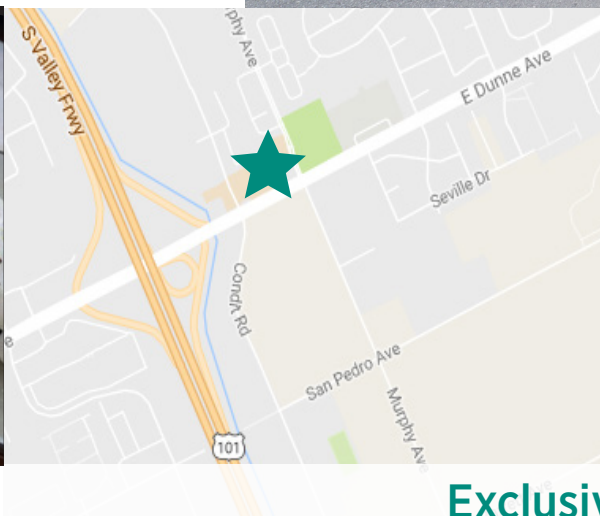
- Professional Office Space
- Great Tenant Mix: Financial Services, Real Estate, Medical/Dental Potential, Restaurants, Street-Level Retail
- Conveniently Located Less Than 1/4 Mile Away From US Hwy 101 at East Dunne
- Abundant Parking
- Elevator Served
- Next Door to 150 New Townhomes



88 Keys Cafe



Hanami Sushi



## Demographics

	1 Mile	3 Miles	5 Miles
Average HH Income	\$93,498	\$117,196	\$120,831
Population	14,951	41,754	51,491

## Traffic Counts

E Dunne Avenue	14,319 ADT
Hwy 101	127,000 ADT

## Exclusive Agent

### Denise Lupretta

408.879.4000 ext. 214  
dlupretta@primecommercialinc.com  
CA LICENSE NO. 01735925



1543 LAFAYETTE STREET · SUITE C · SANTA CLARA · CA · 95050 | OFFICE 408.879.4000 | FAX 408.879.4004 | WWW.PRIMECOMMERCIALINC.COM

Prime Commercial, Inc. has obtained the information contained herein from sources we deem reliable. However, we have not verified its accuracy and make no guarantee, warranty or representation about it. It is subject to errors, modification, omission, change of price and/or terms, prior lease sale or financing, or withdraw without notice. It may include projections, opinions, or assumptions or estimated for example only, and they may represent current or future performance of the property. You and your tax and legal advisors should conduct your own of the property and transaction. The information provided in this brochure are estimates only, not representations, and are not intended to be relied upon for any purpose. All demographic information contained in this brochure is obtained from esri.

# Harvest Plaza

1295 East Dunne Avenue  
Morgan Hill, CA

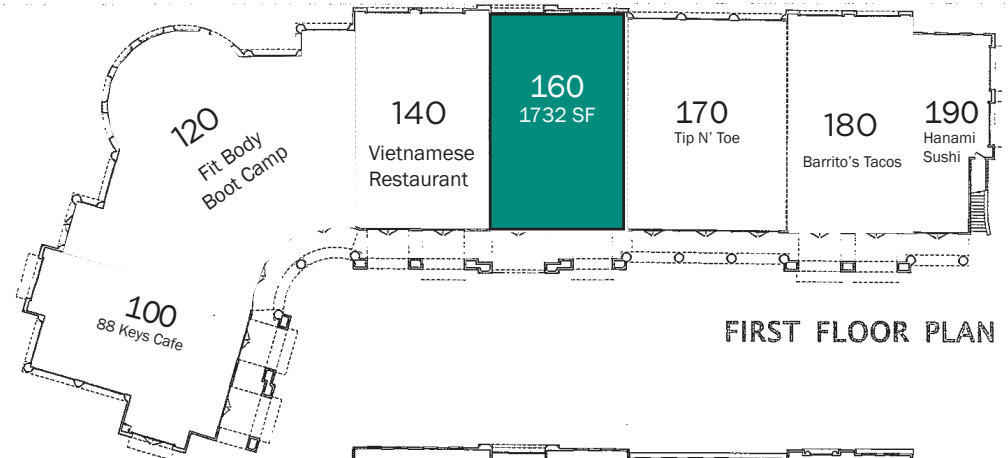
## Space Available

### 1st Floor Retail

Suite 160 - 1,732 SQ. FT.



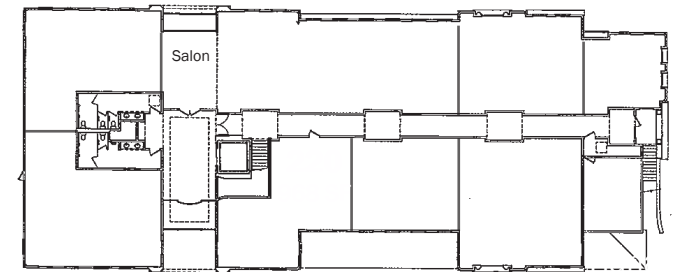
# Site Plan



FIRST FLOOR PLAN

Space Pending

Space Available



SECOND FLOOR PLAN

## Exclusive Agent

**Denise Lupretta**

408.879.4000 ext. 214

[dlupretta@primecommercialinc.com](mailto:dlupretta@primecommercialinc.com)

CA LICENSE NO. 01735925



1543 LAFAYETTE STREET · SUITE C · SANTA CLARA · CA · 95050 | OFFICE 408.879.4000 | FAX 408.879.4004 | [WWW.PRIMECOMMERCIALINC.COM](http://WWW.PRIMECOMMERCIALINC.COM)

Prime Commercial, Inc. has obtained the information contained herein from sources we deem reliable. However, we have not verified its accuracy and make no guarantee, warranty or representation about it. It is subject to errors, modification, omission, change of price and/or terms, prior lease sale or financing, or withdraw without notice. It may include projections, opinions, or assumptions or estimated for example only, and they may represent current or future performance of the property. You and your tax and legal advisors should conduct your own of the property and transaction. The information provided in this brochure are estimates only, not representations, and are not intended to be relied upon for any purpose. All demographic information contained in this brochure is obtained from esri.