

# SKYPORT PLAZA

90 Skyport Drive  
San Jose, California





**377,000 -square-foot office building with approximately  
42,000 square feet of retail in San Jose submarket**

Skyport Plaza is a 38-acre, mixed-use property. Built in 2001, Skyport Plaza is located adjacent to the San Jose International Airport, the VTA Light Rail Metro Airport station and the 87, 101 and 880 Freeways.

Tenants can patronize the restaurants, retail and amenities of Downtown San Jose by a short car or train ride. Skyport Plaza is also proximate to the new Levi's Stadium in Santa Clara, home of the San Francisco 49ers, which has spurred development of residential units and retail around the sports complex. Qualcomm, the global semiconductor company, occupies most of the property.

---

377,000 sf

rentable Class A office

---

42,000 sf

rentable retail space

---

350,000 sf

office & hotel development

---

1,380

parking spaces

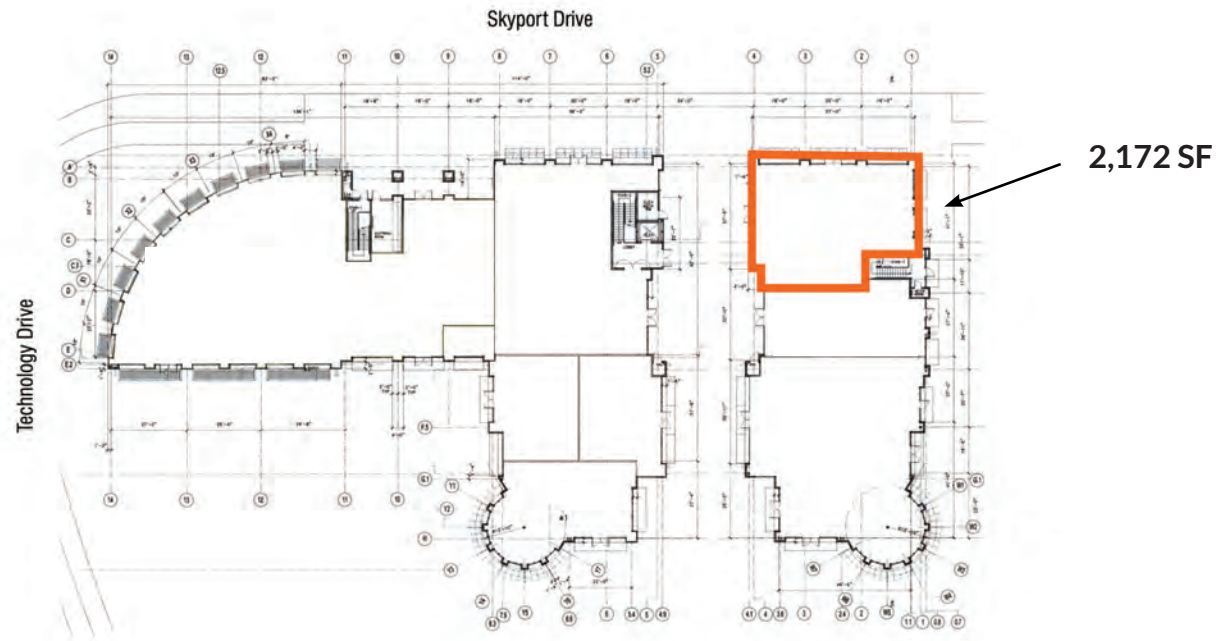
---



# Floor Plans

90 Skyport Drive San Jose, California

Suite 140 2,172 SF







2001 Gateway Place, Suite 350W  
San Jose, CA 95110

T 408.451.4500

W [www.hudsonpacificproperties.com](http://www.hudsonpacificproperties.com)



**Dixie Divine**

408.879.4001

[ddivine@primecommercialinc.com](mailto:ddivine@primecommercialinc.com)

CA BRE 00926251 & 01481181

**Deborah Dizon**

408.879.4000 ext. 202

[ddizon@primecommercialinc.com](mailto:ddizon@primecommercialinc.com)

CA BRE 01271459

**Doug Ferrari**

408.879.4002

[dferrari@primecommercialinc.com](mailto:dferrari@primecommercialinc.com)

CA BRE 01032363