

# Kiely Plaza

1056 Kiely Boulevard Santa Clara, California 95051



## AVAILABLE SPACE

Unit 1056 - 1,666 SF

## HIGHLIGHTS

- Well Established Neighborhood Shopping Center
- Close to Post Office & Santa Clara High School
- High Identity Location at the Corner of Kiely Boulevard and Benton Street
- Abundant Parking
- Monument Signage



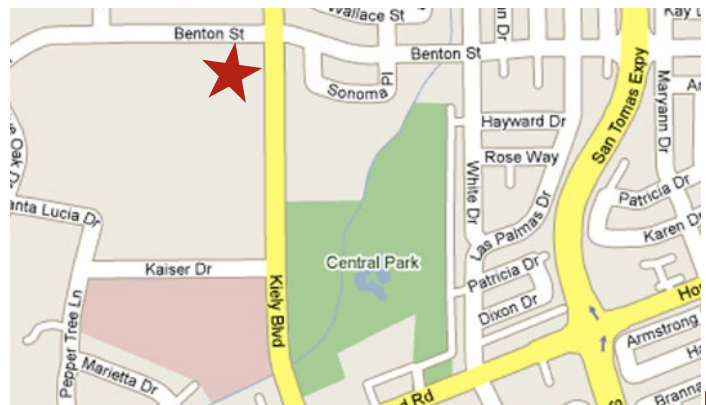
## DEMOGRAPHICS

	1 Mile	3 Miles	5 Miles
Average HH Income	\$99,429	\$100,985	\$102,545
Population	30,082	209,250	553,020



## DENISE LUPRETТА

408.879.4000 Ext. 214  
 dlupretta@primecommercialinc.com  
 CA BRE 01735925



1056 Kiely Boulevard Santa  
Clara, California 95051

# SITE PLAN



## AVAILABLE SPACES

Unit 1056 1,666 Square Feet

**DENISE LUPRETТА**

408.879.4000 Ext. 214  
dlupretta@primecommercialinc.com  
CA BRE 01735925

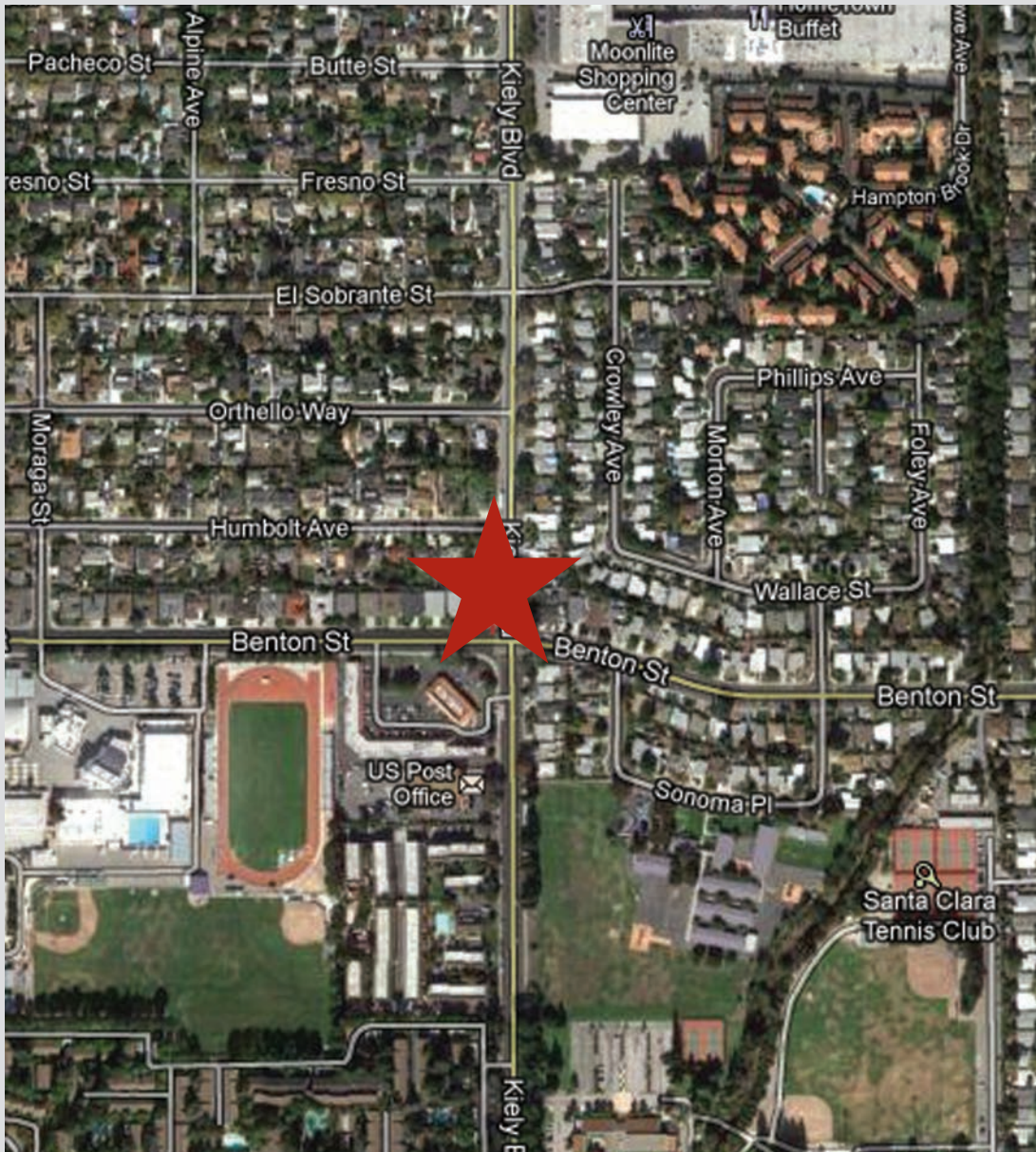
**PC INC** PRIME COMMERCIAL  
INCORPORATED

1543 LAFAYETTE STREET · SUITE C · SANTA CLARA · CA · 95050 | OFFICE 408.879.4000 | FAX 408.879.4004 | WWW.PRIMECOMMERCIALINC.COM

PrimeCommercial, Inc. has obtained the information contained herein from sources we deem reliable. However, we have not verified its accuracy and make no guarantee, warranty or representation about it. It is subject to errors, modification, omission, change of price and/or terms, prior lease sale or financing, or withdrawal without notice. It may include projections, opinions, or assumptions or estimated for example only, and they may represent current or future performance of the property. You and your tax and legal advisors should conduct your own of the property and transaction. The information provided in this brochure are estimates only, not representations, and are not intended to be relied upon for any purpose. All demographic information contained in this brochure is obtained from STDB.

1056 Kiely Boulevard Santa  
Clara, California 95051

# AERIAL



## DENISE LUPRETTA

408.879.4000 Ext. 214  
dlupretta@primecommercialinc.com  
CA LICENSE NO. 01735925



1543 LAFAYETTE STREET · SUITE C · SANTA CLARA · CA · 95050 | OFFICE 408.879.4000 | FAX 408.879.4004 | WWW.PRIMECOMMERCIALINC.COM

PrimeCommercial, Inc. has obtained the information contained herein from sources we deem reliable. However, we have not verified its accuracy and make no guarantee, warranty or representation about it. It is subject to errors, modification, omission, change of price and/or terms, prior to lease sale or financing, or withdrawal without notice. It may include projections, opinions, or assumptions or estimated for example only, and they may represent current or future performance of the property. You and your tax and legal advisors should conduct your own of the property and transaction. The information provided in this brochure are estimates only, not representations, and are not intended to be relied upon for any purpose. All demographic information contained in this brochure is obtained from STDB.