

FOR LEASE

MIDTOWN CORNERS

1401 W San Carlos Street
San Jose, California



PC INC PRIME COMMERCIAL
INCORPORATED

www.primecommercialinc.com

1543 Lafayette Street, Suite C
Santa Clara, CA 95050
Office 408.879.4000
Fax 408.879.4004

DENISE LUPRETТА
408.879.4000 ext. 214
dlupretta@primecommercialinc.com
CA BRE 01735925

Prime Commercial, Inc. has obtained the information contained herein from sources we deem reliable. However, we have not verified its accuracy and make no guarantee, warranty or representation about it. It is subject to errors, modification, omission, change of price and/or terms, prior lease sale or financing, or withdraw without notice. It may include projections, opinions, or assumptions or estimated for example only, and they may represent current or future performance of the property. You and your tax and legal advisors should conduct your own of the property and transaction. The information provided in this brochure are estimates only, not representations, and are not intended to be relied upon for any purpose. All demographic information contained in this brochure is obtained from esri.

FEATURES

MIDTOWN CORNERS

San Jose, California

- 1,360 Sq Ft Available
- Located at the high-identity intersection of W San Carlos Street and Meridian Avenue
- Second floor office space with private restroom and outdoor patio area
- Across from Midtown Shopping Center anchored by Safeway
- Neighboring tenants include Starbucks, Walgreens, and Italian Brothers Bakery
- \$1.50/sf NNN
- Offering 3 months free on a minimum 3-5 year term

MAP



DEMOGRAPHICS

	1 MILE	3 MILES	5 MILES
POPULATION	33,404	247,621	678,237
DAYTIME POP.	16,330	169,836	369,532
AVG HH INCOME	\$104,051	\$110,921	\$114,855

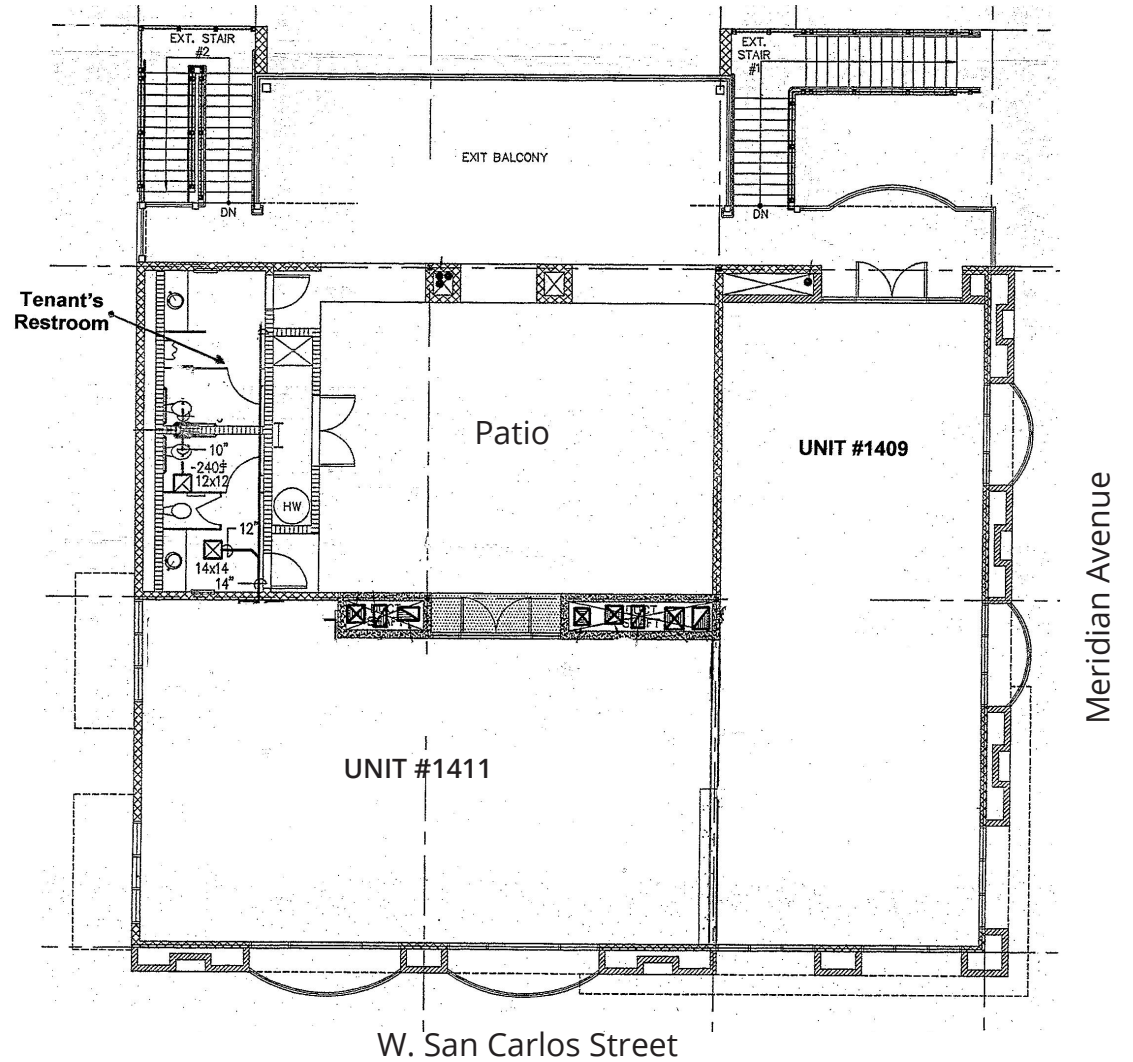
TRAFFIC COUNTS

W SAN CARLOS STREET	25,000
MERIDIAN AVENUE	17,561

SITE PLAN

MIDTOWN CORNERS

San Jose, California



PRIME COMMERCIAL
INCORPORATED

www.primecommercialinc.com

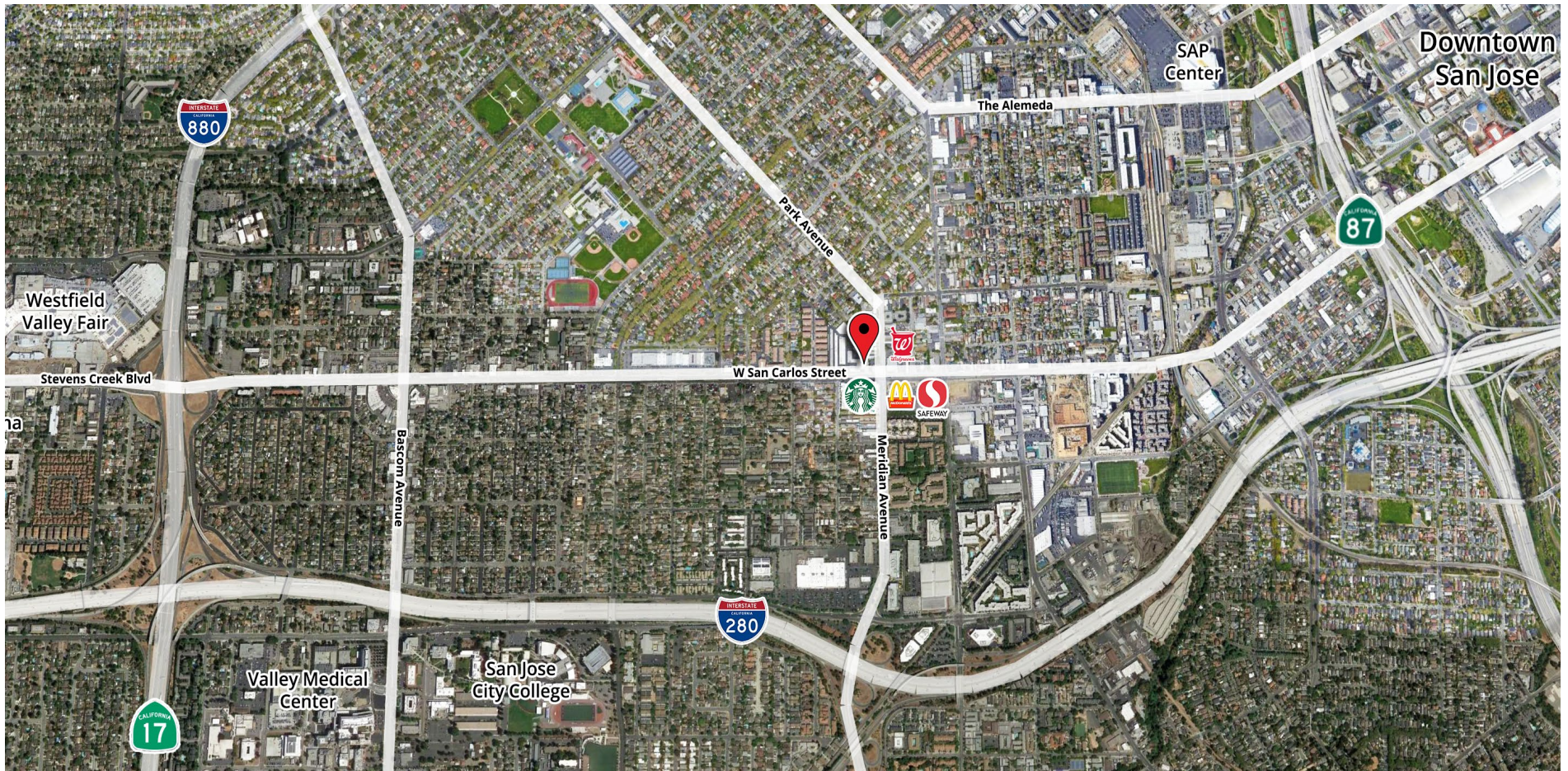
1543 Lafayette Street, Suite C
Santa Clara, CA 95050
Office 408.879.4000
Fax 408.879.4004

DENISE LUPRETТА
408.879.4000 ext. 214
dlupretta@primecommercialinc.com
CA BRE 01735925

AREA MAP

MIDTOWN CORNERS

San Jose, California



PC INC PRIME COMMERCIAL
INCORPORATED

www.primecommercialinc.com

1543 Lafayette Street, Suite C
Santa Clara, CA 95050
Office 408.879.4000
Fax 408.879.4004

DENISE LUPRETТА
408.879.4000 ext. 214
dlupretta@primecommercialinc.com
CA BRE 01735925