

1543 LAFAYETTE STREET SANTA CLARA, CALIFORNIA



Features:

- Cathedral Ceilings and Indirect Lighting
- Located Near the NWC of Lafayette Street & El Camino Real
- Only 3 Blocks from Santa Clara University
- On-Site Covered Parking
- Monument Signage

Demographics:

	1 Mile	3 Miles	5 Miles
Avg HH Income:	\$82,292	\$110,211	\$110,443
Population:	21,448	171,565	599,740

Available:

- Second Floor, 2,400 SF
 - Executive Suite with 9 Private Offices, Conference Room, Kitchen, Reception Area, and 2 Restrooms
 - Full Service - Includes Utilities & Janitorial
 - \$2.20 SF Full Service
- First Floor Retail, 450 SF
 - Private Restroom
 - Modified Gross- Includes Utilities
 - \$3.00 SF

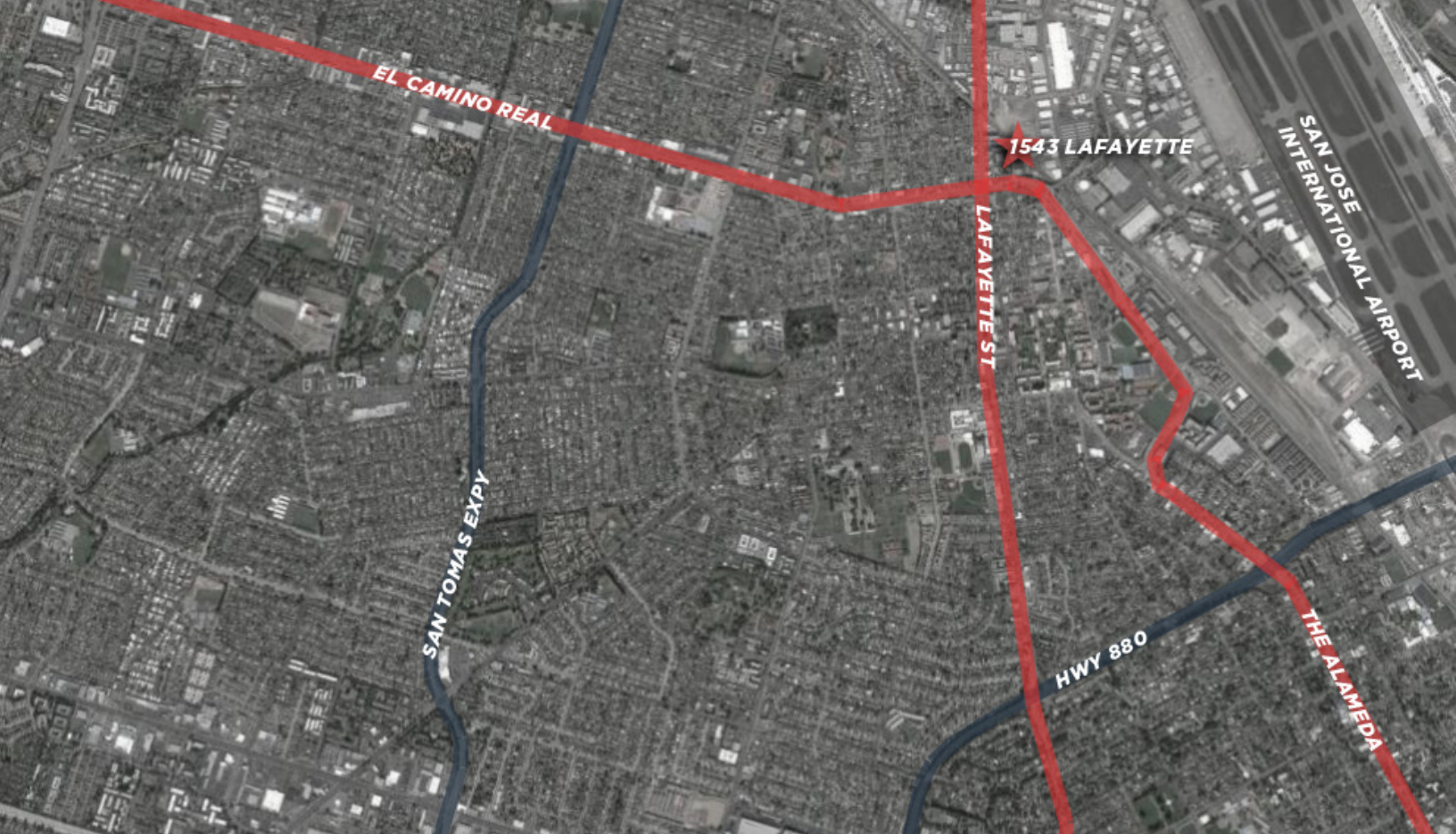
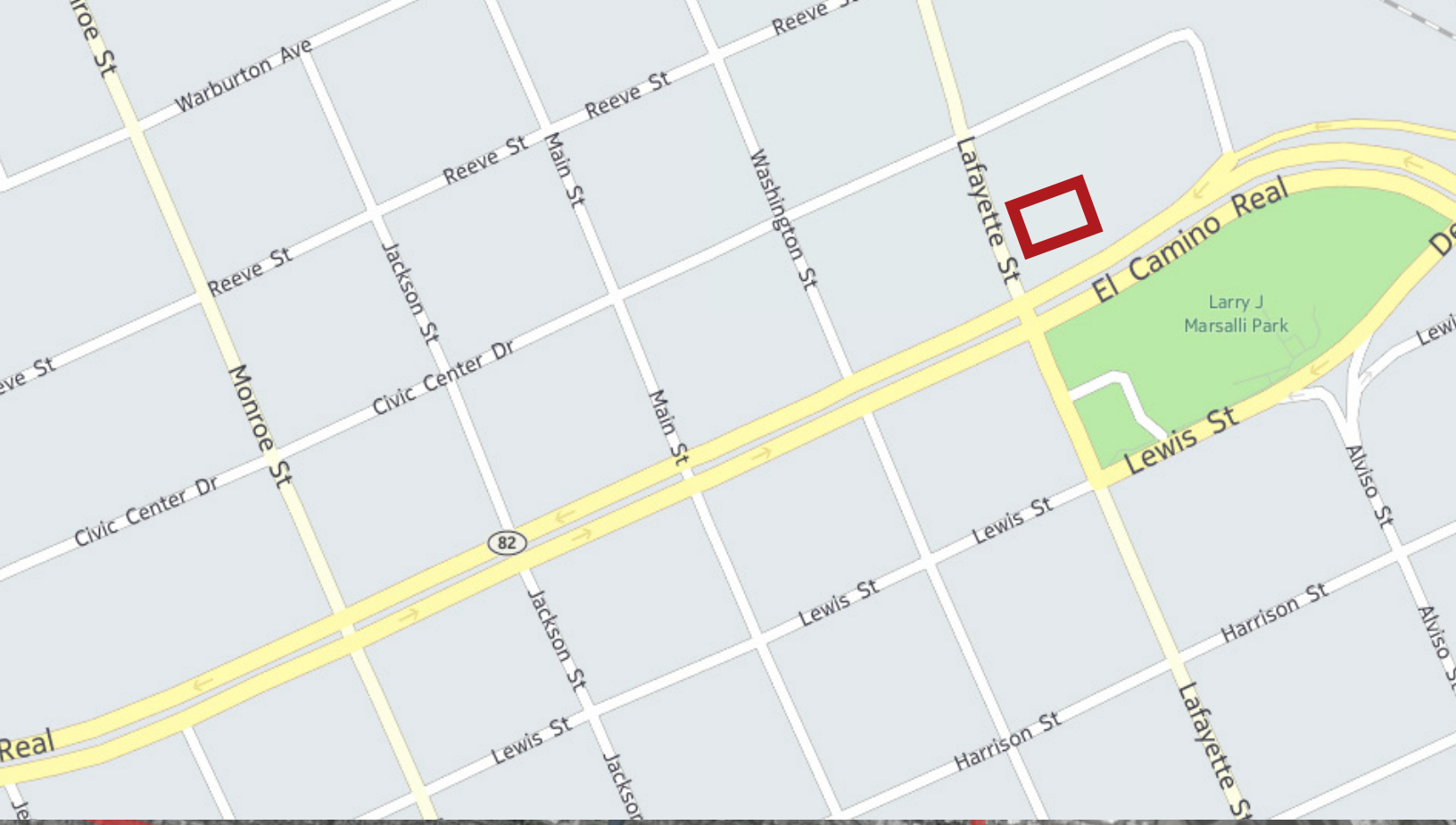


Dixie Divine
408.879.4001
ddivine@primecommercialinc.com
CA BRE 00926251 & 01481181

Doug Ferrari
408.879.4002
dferrari@primecommercialinc.com
CA BRE 01032363

1543 LAFAYETTE STREET · SUITE C · SANTA CLARA · CA · 95050 | OFFICE 408.879.4000 | FAX 408.879.4004 | WWW.PRIMECOMMERCIALINC.COM

Prime Commercial, Inc. has obtained the information contained herein from sources we deem reliable. However, we have not verified its accuracy and make no guarantee, warranty or representation about it. It is subject to errors, modification, omission, change of price and/or terms, prior lease sale or financing, or withdraw without notice. It may include projections, opinions, or assumptions or estimated for example only, and they may represent current or future performance of the property. You and your tax and legal advisors should conduct your own of the property and transaction. The information provided in this brochure are estimates only, no representations, and are not intended to be relied upon for any purpose. All demographic information contained in this brochure is obtained from STDB.



PRIME COMMERCIAL
INCORPORATED

Dixie Divine

408.879.4001

ddivine@primecommercialinc.com

CA BRE 00926251 & 01481181

Doug Ferrari

408.879.4002

dferrari@primecommercialinc.com

CA BRE 01032363

1543 LAFAYETTE STREET · SUITE C · SANTA CLARA · CA · 95050 | OFFICE 408.879.4000 | FAX 408.879.4004 | WWW.PRIMECOMMERCIALINC.COM

Prime Commercial, Inc. has obtained the information contained herein from sources we deem reliable. However, we have not verified its accuracy and make no guarantee, warranty or representation about it. It is subject to errors, modification, omission, change of price and/or terms, prior lease sale or financing, or withdraw without notice. It may include projections, opinions, or assumptions or estimated for example only, and they may represent current or future performance of the property. You and your tax and legal advisors should conduct your own of the property and transaction. The information provided in this brochure are estimates only, not representations, and are not intended to be relied upon for any purpose. All demographic information contained in this brochure is obtained from STDB.